



CPC Africa Desk InterTropical (ITF) Front Analysis

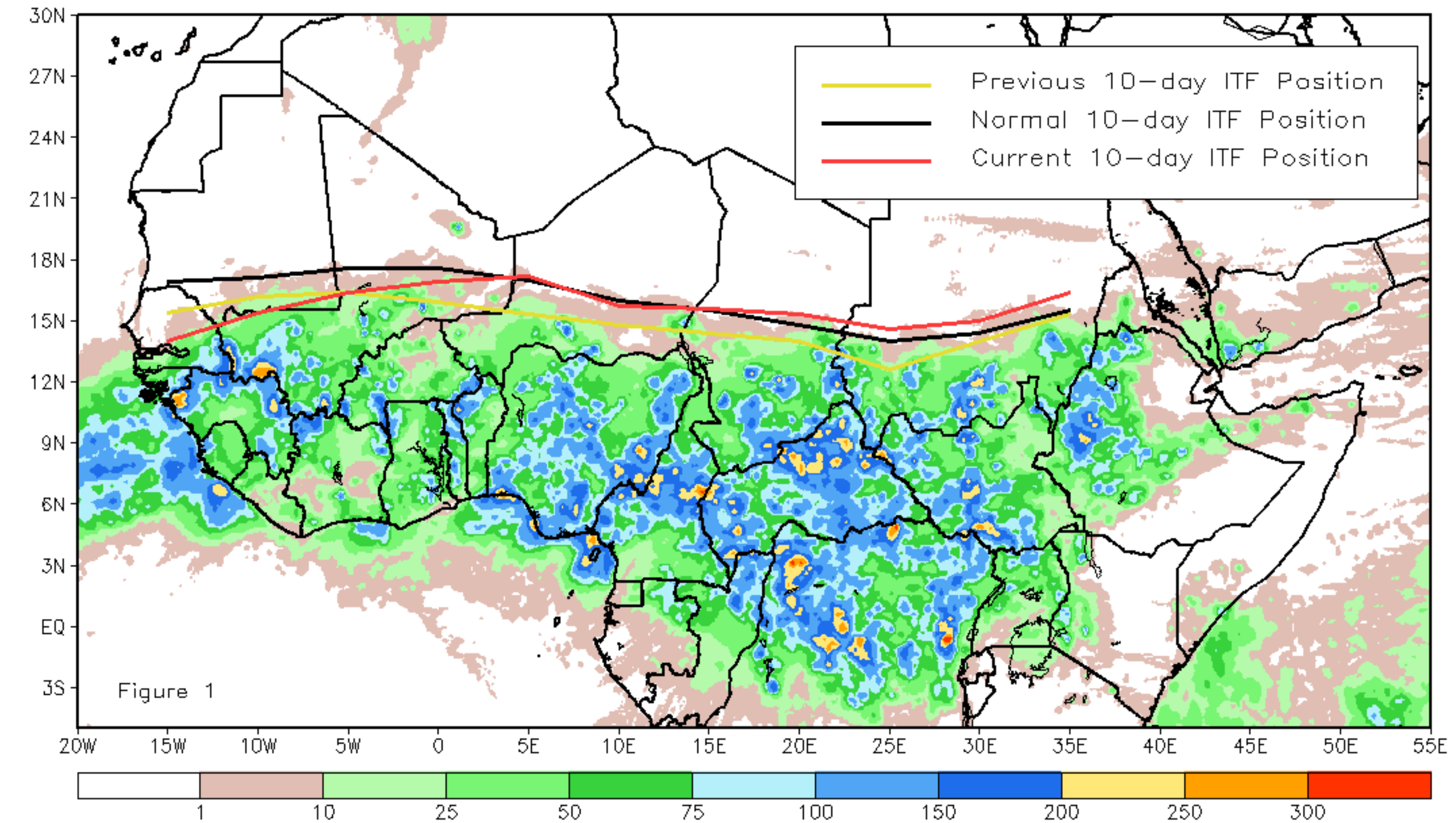
June 2020, Dekad 3

Discussion:

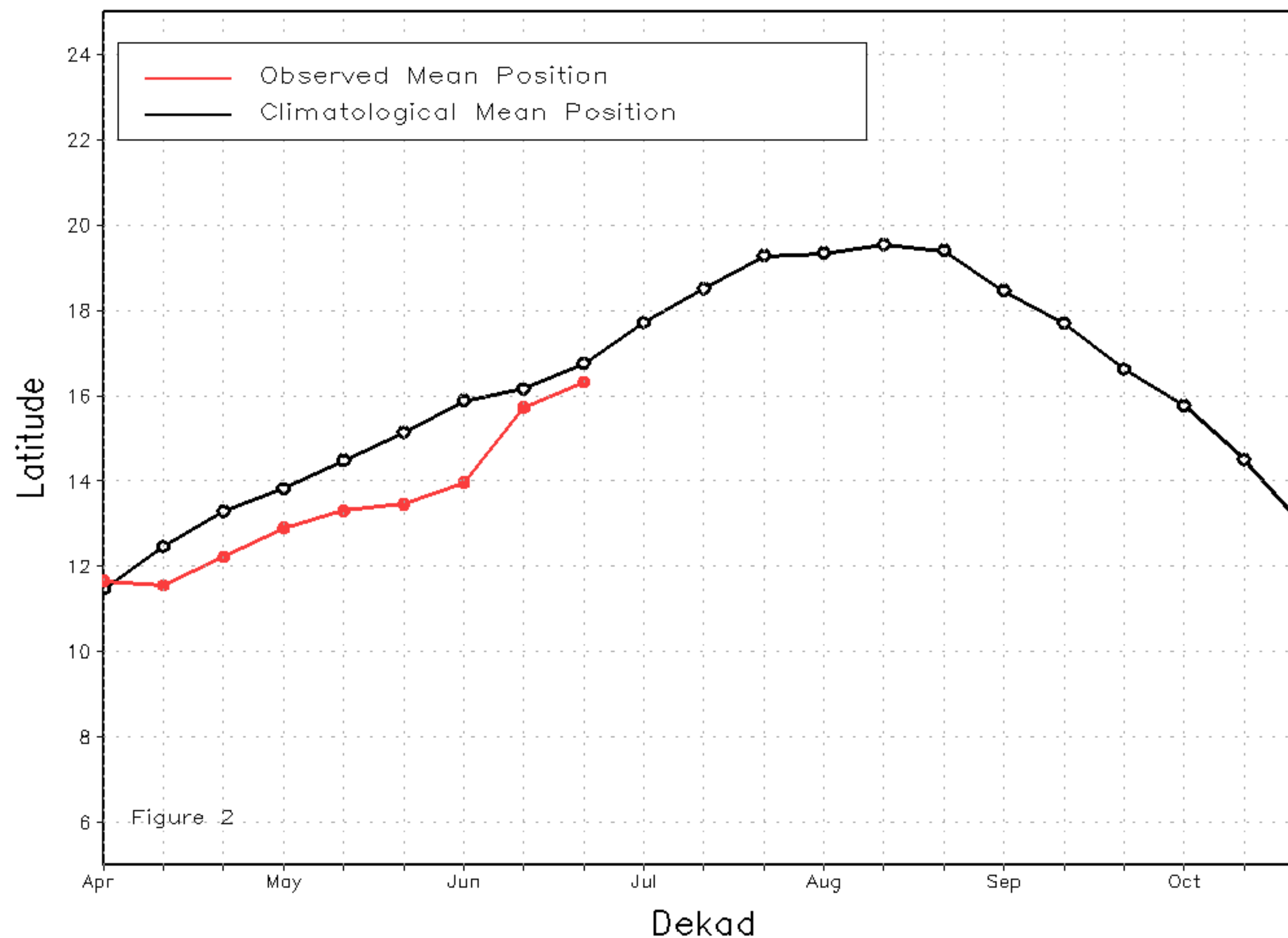
From June 21-30, the major part of ITF has moved far northward and very close to the normal position between 5W-35E while the far western part of the ITF has moved back southward of the previous decade position. Between 15W-5W longitude, a diminution of precipitation has been noticed over the southern part of Senegal and the central part of Mali. Meanwhile the western portion of the ITF follows closely the normal position between 5E-35E. The mean western (10W-10E) portion of the ITF was approximated at 16.3N, which is about 0.8 degree south from the normal position. The mean eastern (20E-35E) portion of the ITF was located at 15.3N, which is about 0.6 north from the long-term mean position. Figure 1 displays the current position of the ITF relative to the long-term climatological position during the 3rd dekad of June and its previous position during the 2nd dekad of June. Figures 2 and 3 are time series, illustrating the latitudinal values of the western and eastern portions of the ITF, respectively, and their seasonal evolutions since April, 2020.

Current vs. Normal Dekadal ITF Position
and RFE Accumulated Precipitation (mm)

June 2020, Dekad 3



Mean Western Portion of the ITF: Averaged 10W to 10E
As of: June 2020, Dekad 3



Mean Eastern Portion of the ITF: Averaged 20E to 35E
As of: June 2020, Dekad 3

