



# CPC Africa Desk InterTropical (ITF) Front Analysis

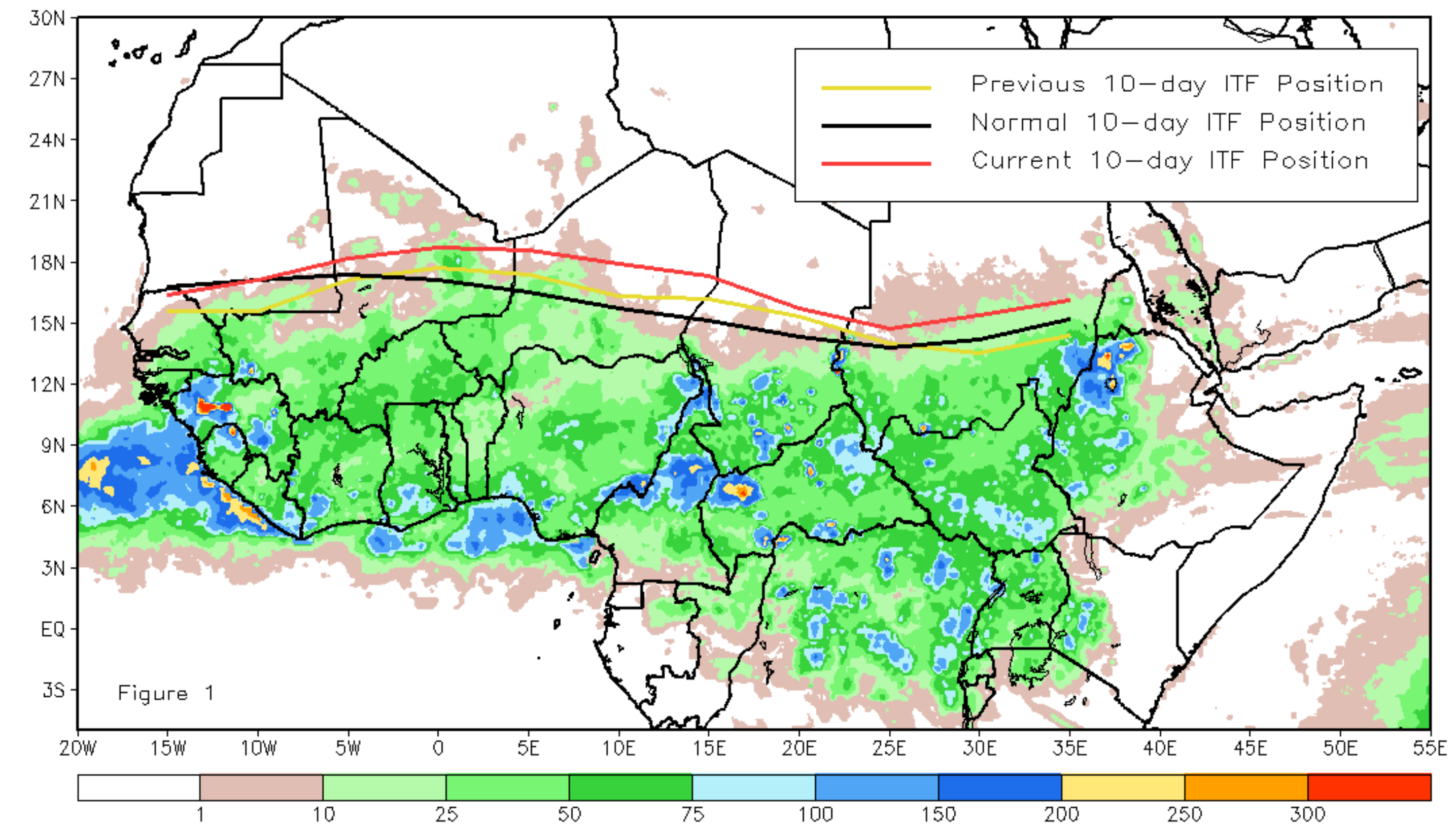
## June 2019, Dekad 3

### Discussion:

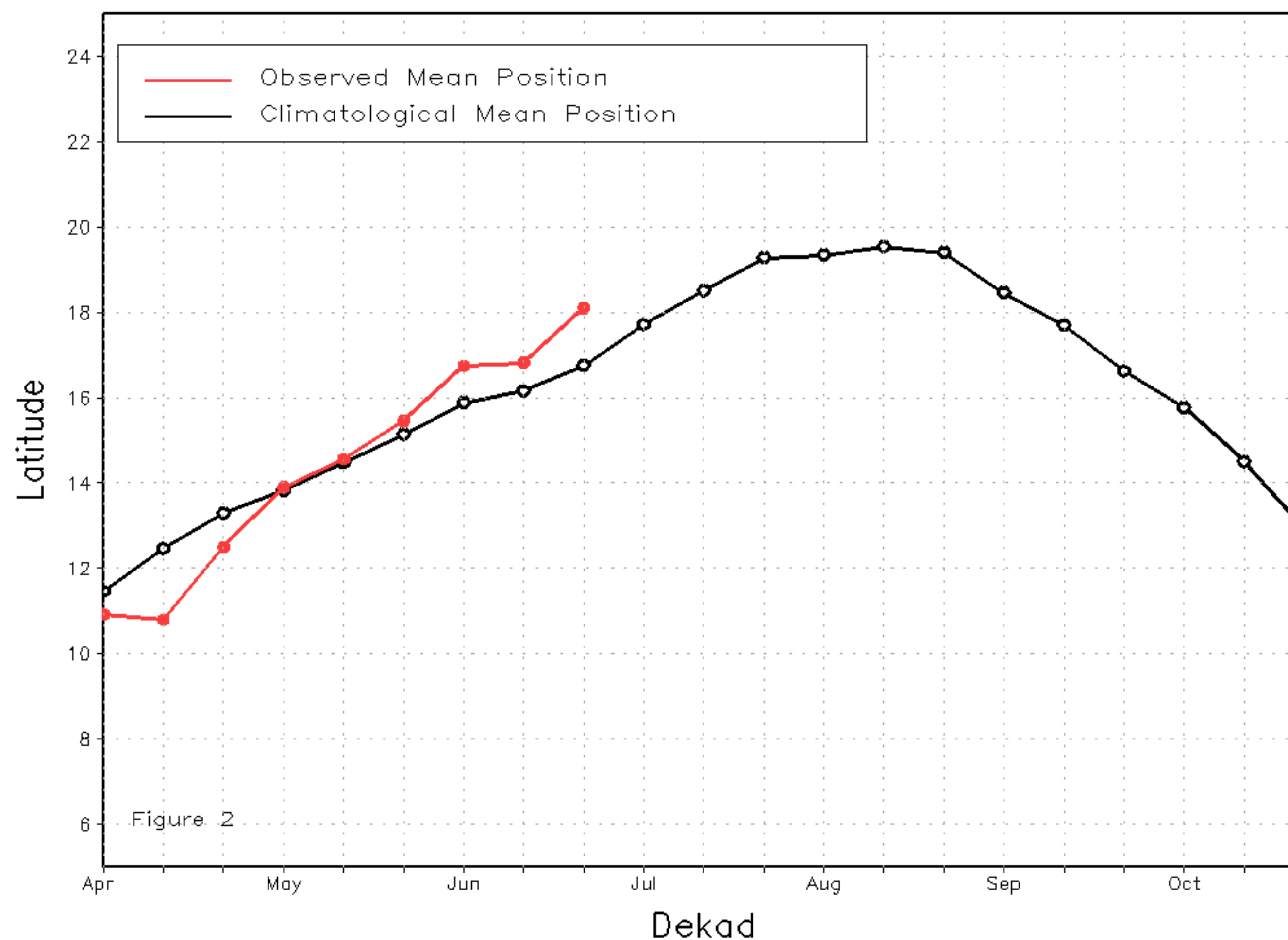
From June 21-30, the ITF between progressed northward compared to last decade along almost its entire length. The mean western (15W-0E) portion of the ITF position is approximated at 18.1N, which is north of its climatological position by 1.3 degrees. The western end of the ITF still lags behind the rest, and is located just south of its climatological position. This may have kept an increased chance of below-average rainfall over the coastline of Senegal and Guinea Bissau. Between 0E-35E, the ITF was approximated at 15.5N, which is 1.1 degrees north of its climatological position of 14.4N. This marked the return to northward propagation after a brief period of regression during the previous dekad. The ITF location further north than average is connected with some above average rainfall in the region. Figure 1 shows the current position of the ITF relative to the long-term average position during the 3rd decade of June and its previous position during the 2nd decade of June. Figures 2 and 3 are time series, illustrating the latitudinal values of the western and eastern portions of the ITF, respectively, and their seasonal evolutions since April, 2019.

Current vs. Normal Dekadal ITF Position  
and RFE Accumulated Precipitation (mm)

June 2019, Dekad 3



Mean Western Portion of the ITF: Averaged 10W to 10E  
As of: June 2019, Dekad 3



Mean Eastern Portion of the ITF: Averaged 20E to 35E  
As of: June 2019, Dekad 3

