



# CPC Africa Desk InterTropical (ITF) Front Analysis

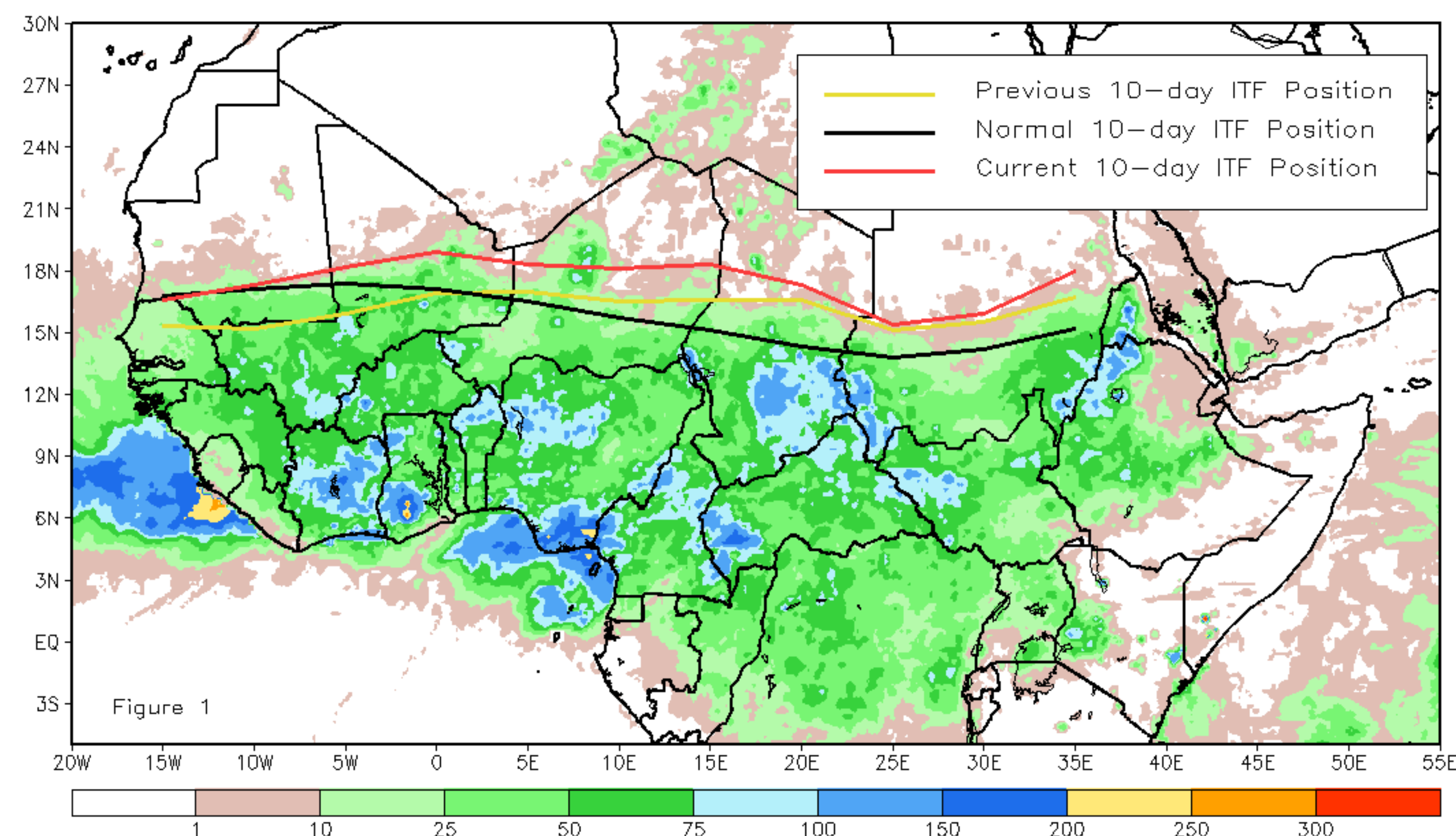
## June 2018, Dekad 3

### Discussion:

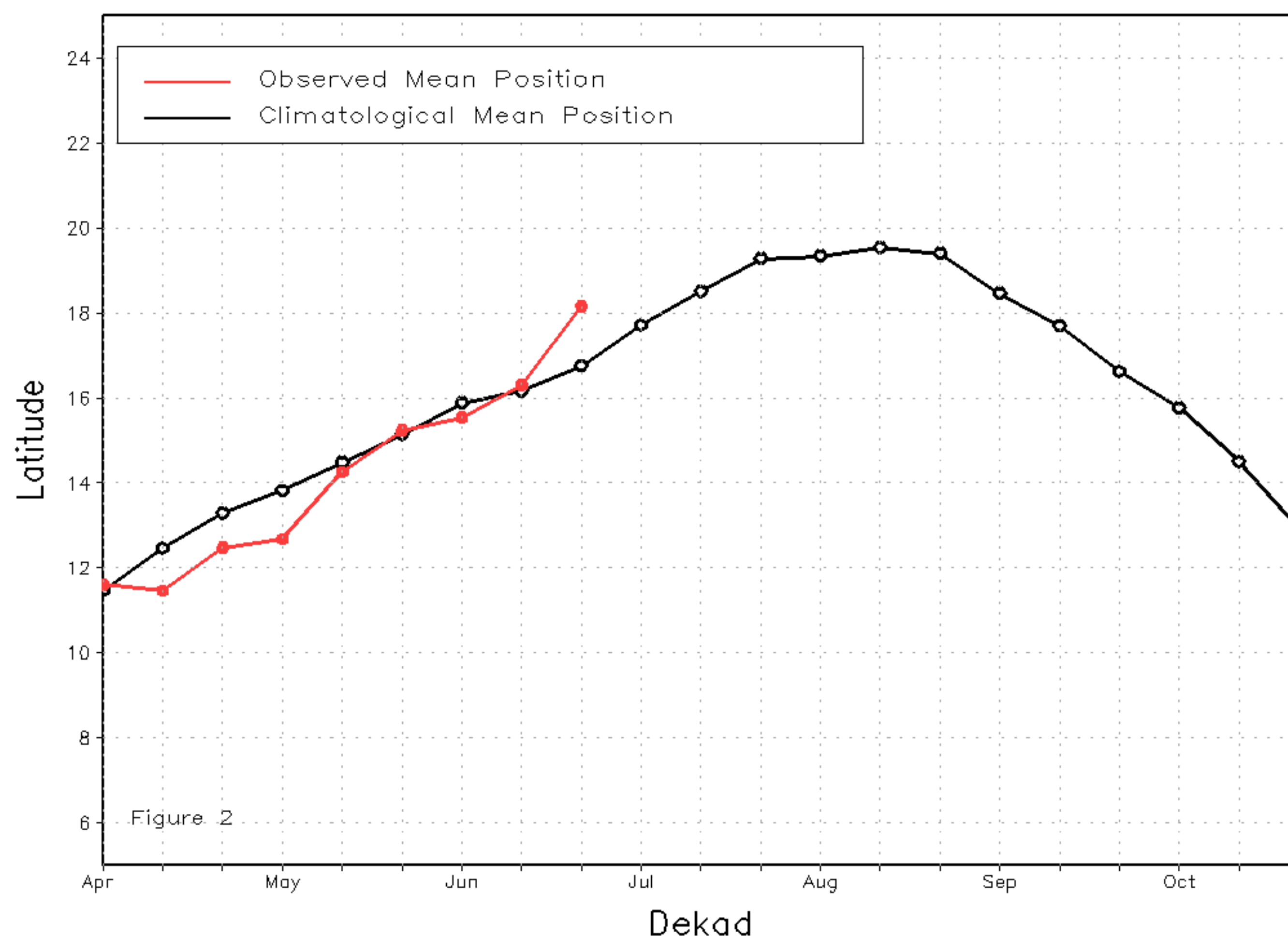
From June 21-30, the ITF exhibited a large northward advancement in western Africa, and a significant advancement in eastern Africa during the end of June. The mean western (10W-10E) portion of the ITF was approximated at 18.2N, rising well above the climatological normal position by 1.6 degrees. The mean eastern (20E - 35E) portion of the ITF was approximated at 16.6N, very much above the climatological mean position (14.4N) by a remarkable 2.2 degrees. This latest eastern ITF portion anomaly is another significant jump northward from what was already a record position for mid-June going back to the start of the ITF record in 1989. Figure 1 shows the current position of the ITF relative to the mean climatological (black) position during the 3rd dekad of June and its previous (yellow) position during the 2nd dekad of June. Figures 2 and 3 are time series, illustrating the mean latitudinal values of the western and eastern portion of the ITF, respectively, and their seasonal evolution compared to climatology since April, 2018.

Current vs. Normal Dekadal ITF Position  
and RFE Accumulated Precipitation (mm)

June 2018, Dekad 3



Mean Western Portion of the ITF: Averaged 10W to 10E  
As of: June 2018, Dekad 3



Mean Eastern Portion of the ITF: Averaged 20E to 35E  
As of: June 2018, Dekad 3

