



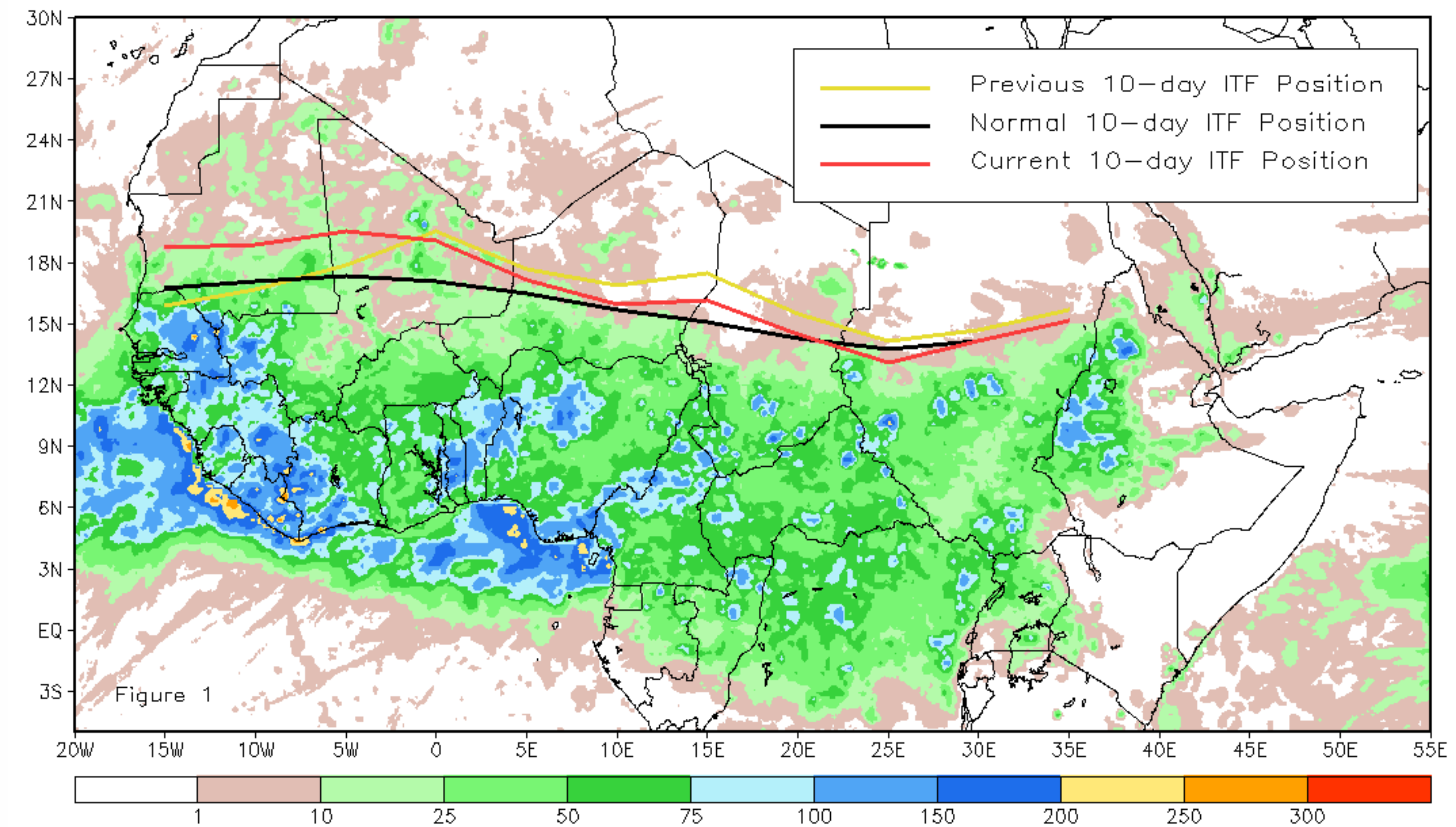
# CPC Africa Desk InterTropical (ITF) Front Analysis

## June 2017, Dekad 3

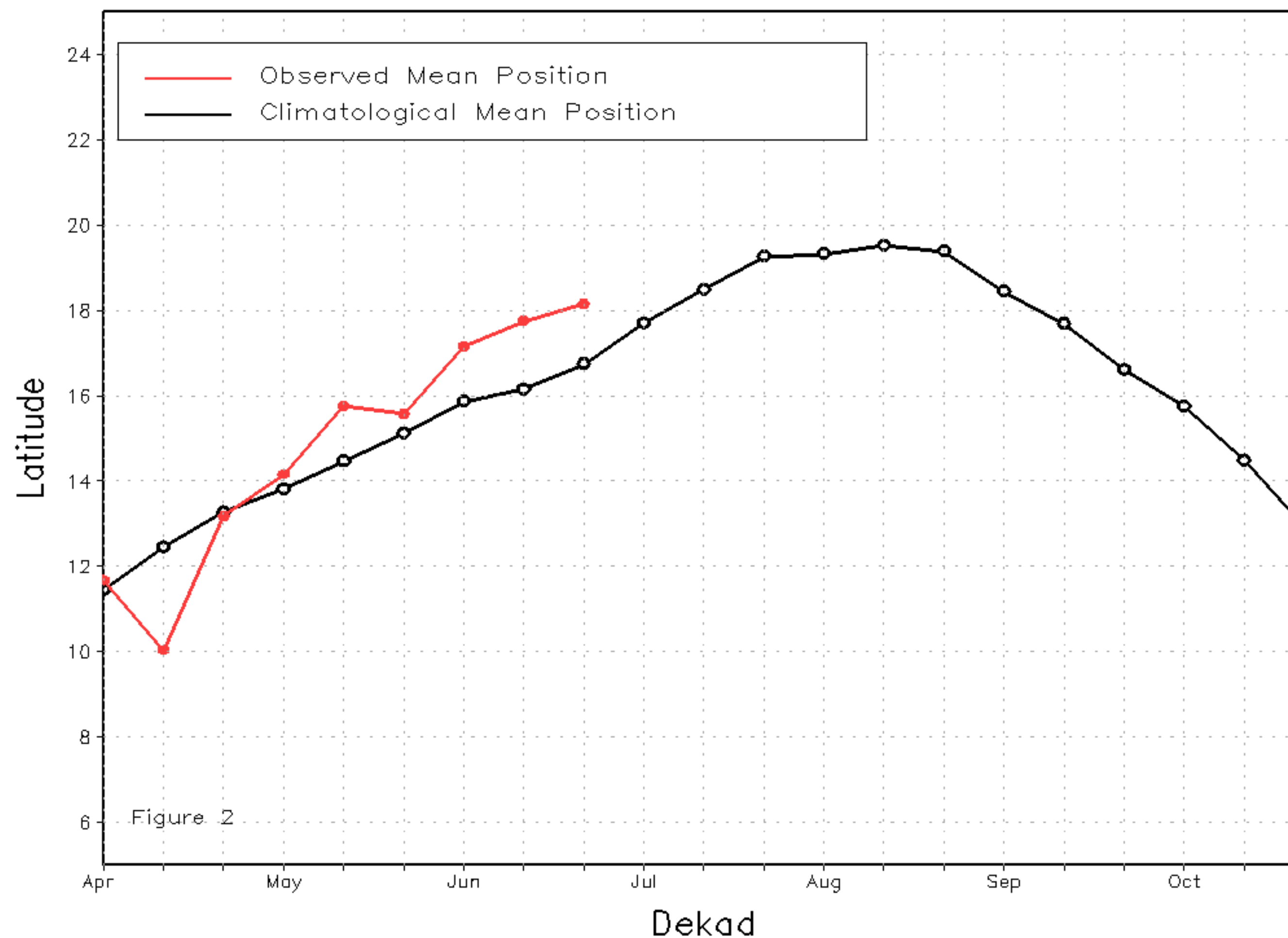
### Discussion:

From June 21-30, the ITF experienced a significant northward movement across its western portion but a slight retreat relative to its position during the previous period across its eastern segment. The western (10W-10E) portion of the ITF was approximated at 18.2N, which was to the north of the mean position by 1.4 degrees. This resulted in above-average rainfall along the Gulf of Guinea and parts of the Sahel. The eastern (20E-35E) portion of the ITF was located at 14.2N, which was slightly to the south of the long-term average position by 0.2 degree. This led to near-average rainfall over the region. Figure 1 shows the current position of the ITF relative to its climatological position during the 3rd dekad of June and its previous position during the 2nd dekad of June. Figures 2 and 3 are time series, illustrating the mean latitudinal values of the western and eastern portion of the ITF, respectively, and their evolutions since April, 2017.

Current vs. Normal Dekadal ITF Position  
and RFE Accumulated Precipitation (mm)  
June 2017, Dekad 3



Mean Western Portion of the ITF: Averaged 10W to 10E  
As of: June 2017, Dekad 3



Mean Eastern Portion of the ITF: Averaged 20E to 35E  
As of: June 2017, Dekad 3

