



CPC Africa Desk InterTropical (ITF) Front Analysis

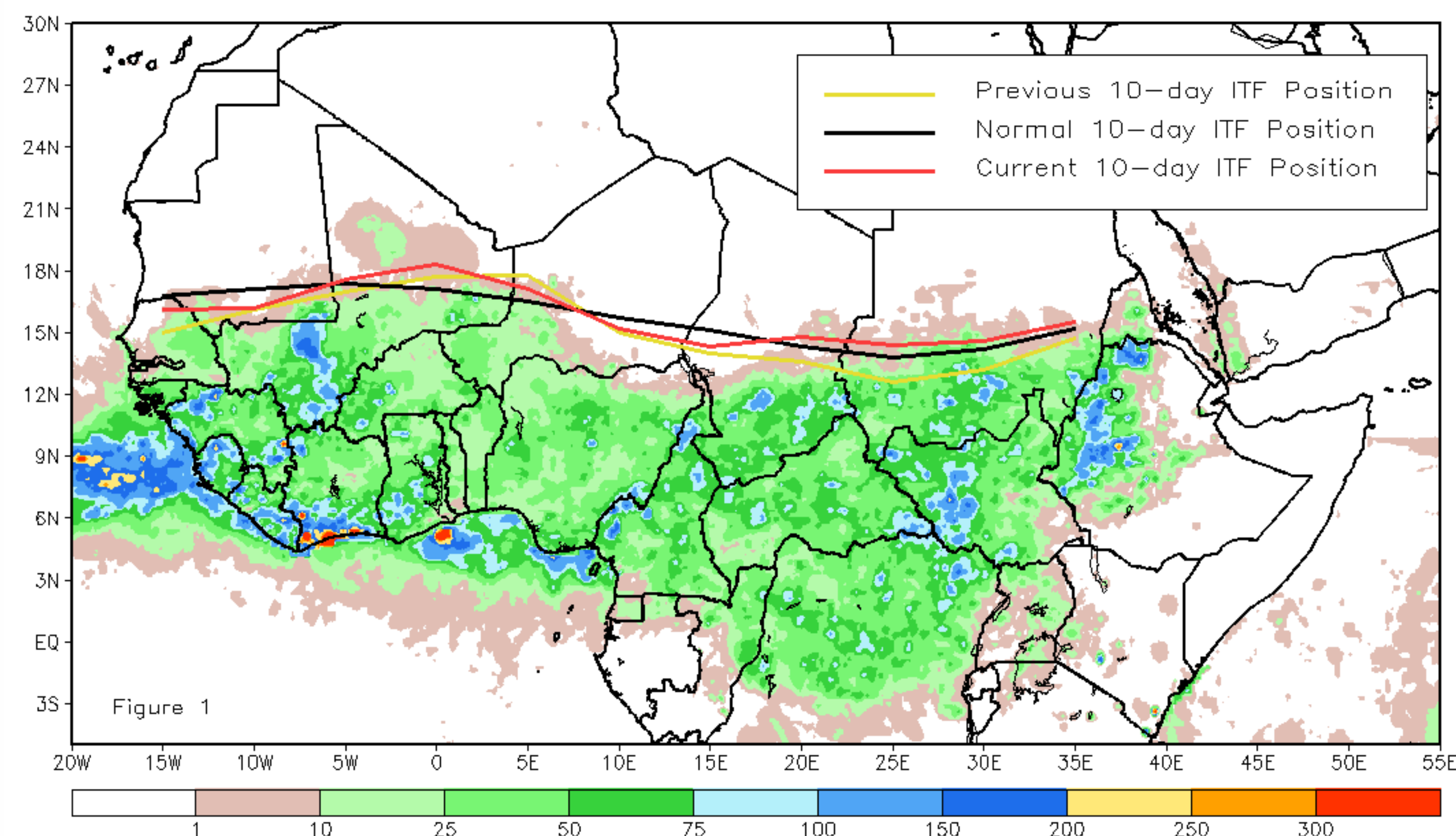
June 2014, Dekad 3

Discussion:

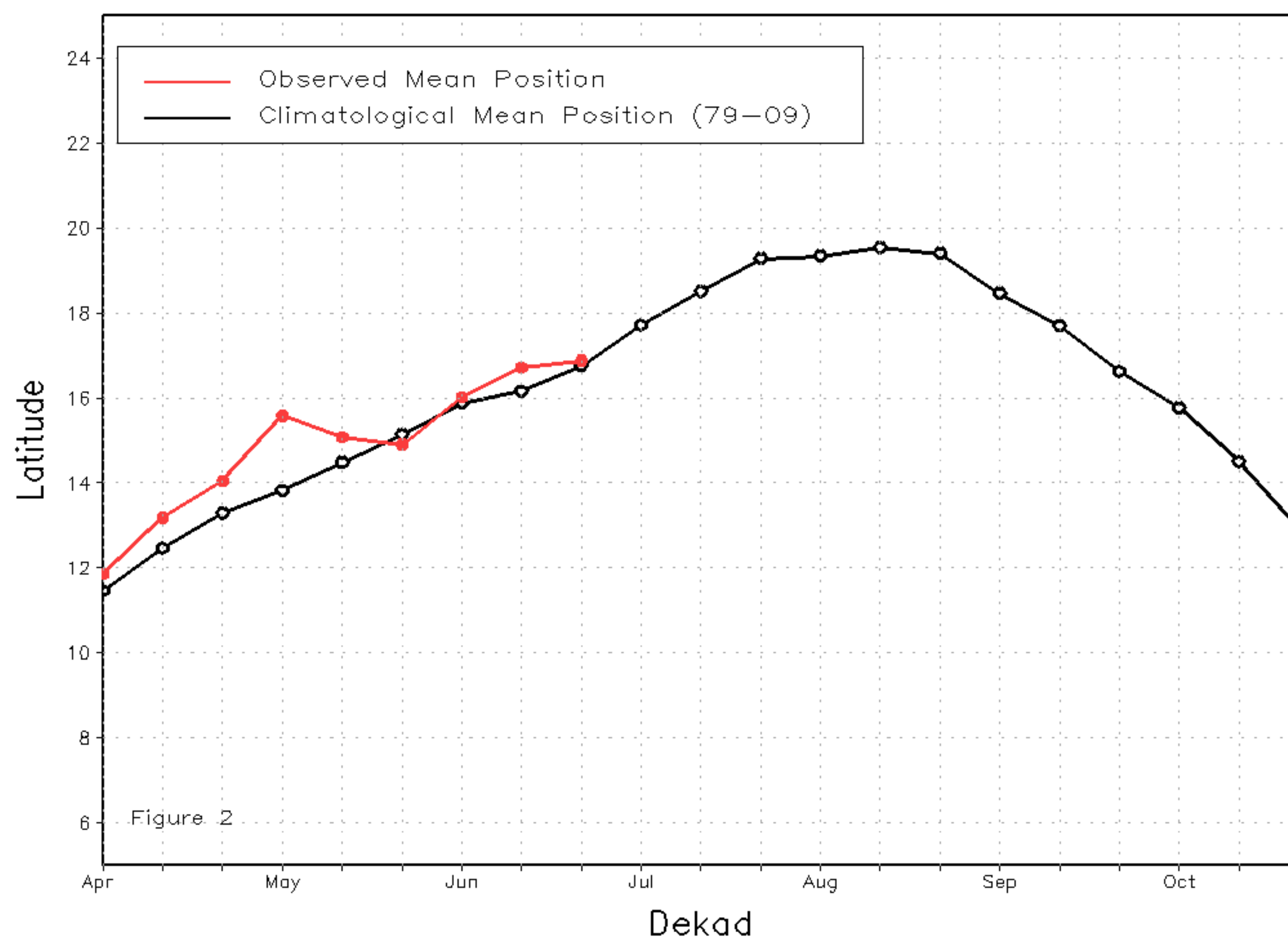
From June 21-30, 2014, the ITF advanced farther North across much of Africa with the exception of some portions along its western segment. The ITF was located South of the climatological position across southern Mauritania and the southeastern Niger-western Chad region. Nonetheless, both the mean western and eastern portions of the ITF were positioned northward of their average positions during the dekad. The mean western segment of the ITF was approximated at 16.9N and was North of the average position by 0.1 degree. The mean eastern portion of the ITF was located nearly at 14.8N and led the average position by 0.4 degree. This resulted in above-average rainfall over the western half of West Africa and much of southern Sudan and South Sudan and below-average rainfall over parts of southeastern Niger, northern Nigeria, and western Chad. Figure 1 shows the current ITF position relative to its long-term average position during the third dekad of June and its previous position during the second dekad of June. Figures 2 and 3 are time series, illustrating the mean latitudinal values of the western and eastern portion of the ITF, respectively, and their evolutions since April, 2014.

Current vs. Normal Dekadal ITF Position
and RFE Accumulated Precipitation (mm)

June 2014, Dekad 3



Mean Western Portion of the ITF: Averaged 10W to 10E
As of: June 2014, Dekad 3



Mean Eastern Portion of the ITF: Averaged 20E to 35E
As of: June 2014, Dekad 3

