



# CPC Africa Desk InterTropical (ITF) Front Analysis

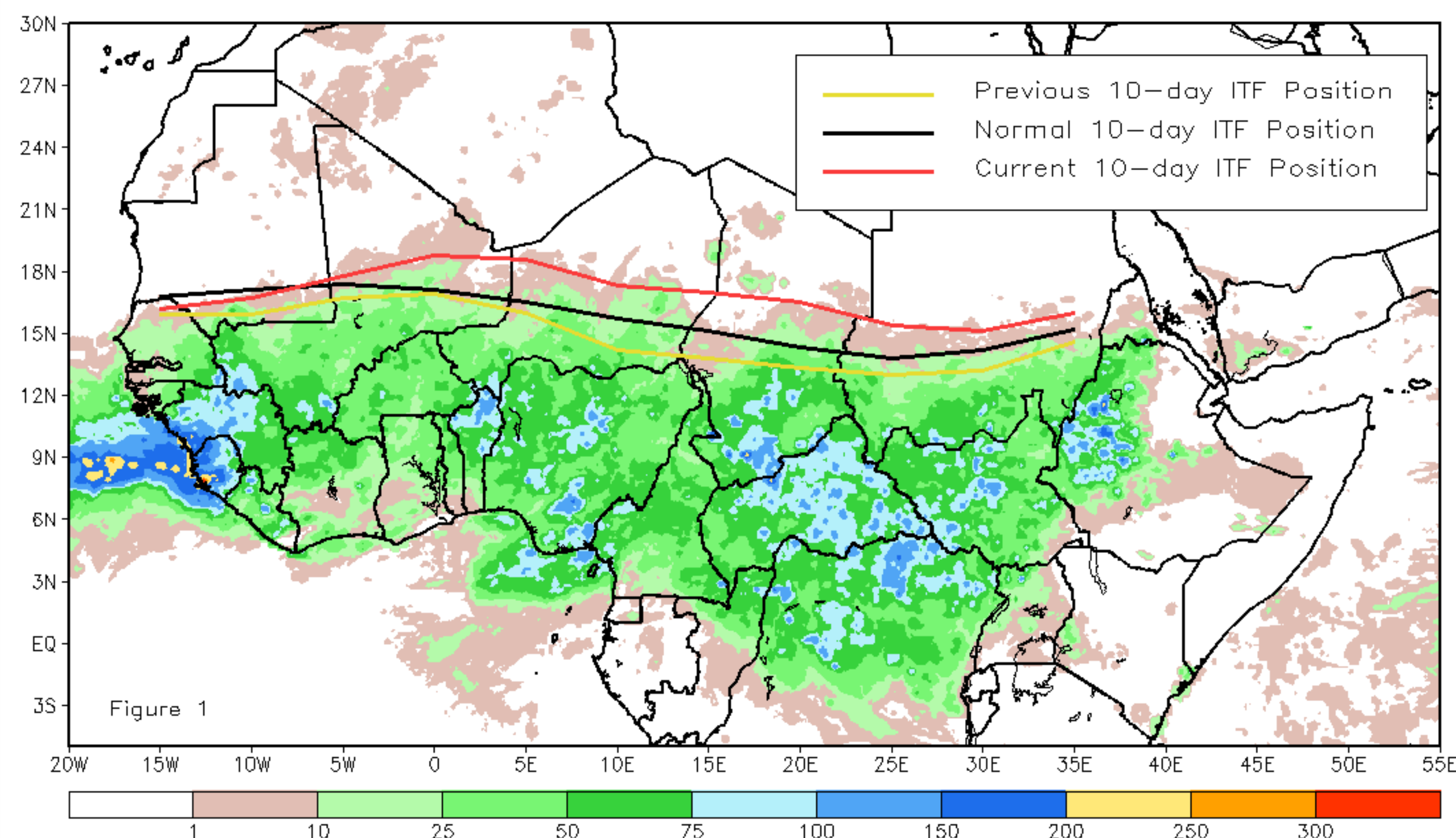
## June 2013, Dekad 3

### Discussion:

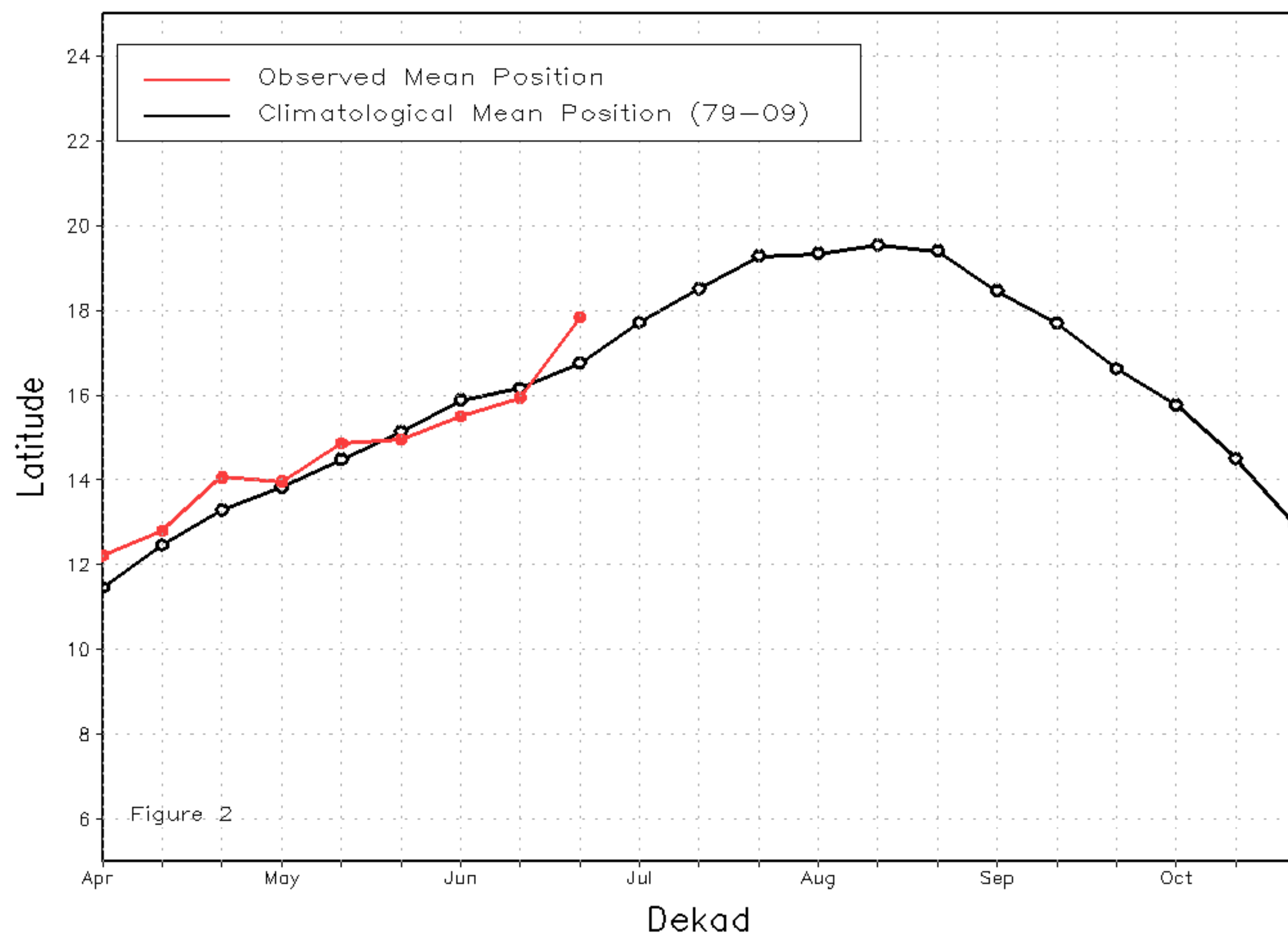
From June 21-30, 2013, the ITF experienced a substantial northward advancement across Africa. Stronger southerly flow associated with the intensification of the southern Hemisphere climatological average position and resulted in above-average rainfall throughout the Sahelian-Sudanian and Guinean-Sudanian regions of Africa. The mean western portion of the ITF was located near 17.8 degrees north, which led the mean position by 1 degree. The mean eastern portion of the ITF was centered upon 15.8 degrees north and was also above the average position by 1.4 degrees. Figure 1 shows the current ITF position relative to its long-term average position during the third dekad of June and its previous position during the second dekad of June. Figures 2 and 3 are time series, displaying the mean latitudinal values of the western and eastern portion of the ITF, respectively, and their evolutions since April, 2013.

Current vs. Normal Dekadal ITF Position  
and RFE Accumulated Precipitation (mm)

June 2013, Dekad 3



Mean Western Portion of the ITF: Averaged 10W to 10E  
As of: June 2013, Dekad 3



Mean Eastern Portion of the ITF: Averaged 20E to 35E  
As of: June 2013, Dekad 3

