



CPC Africa Desk InterTropical (ITF) Front Analysis

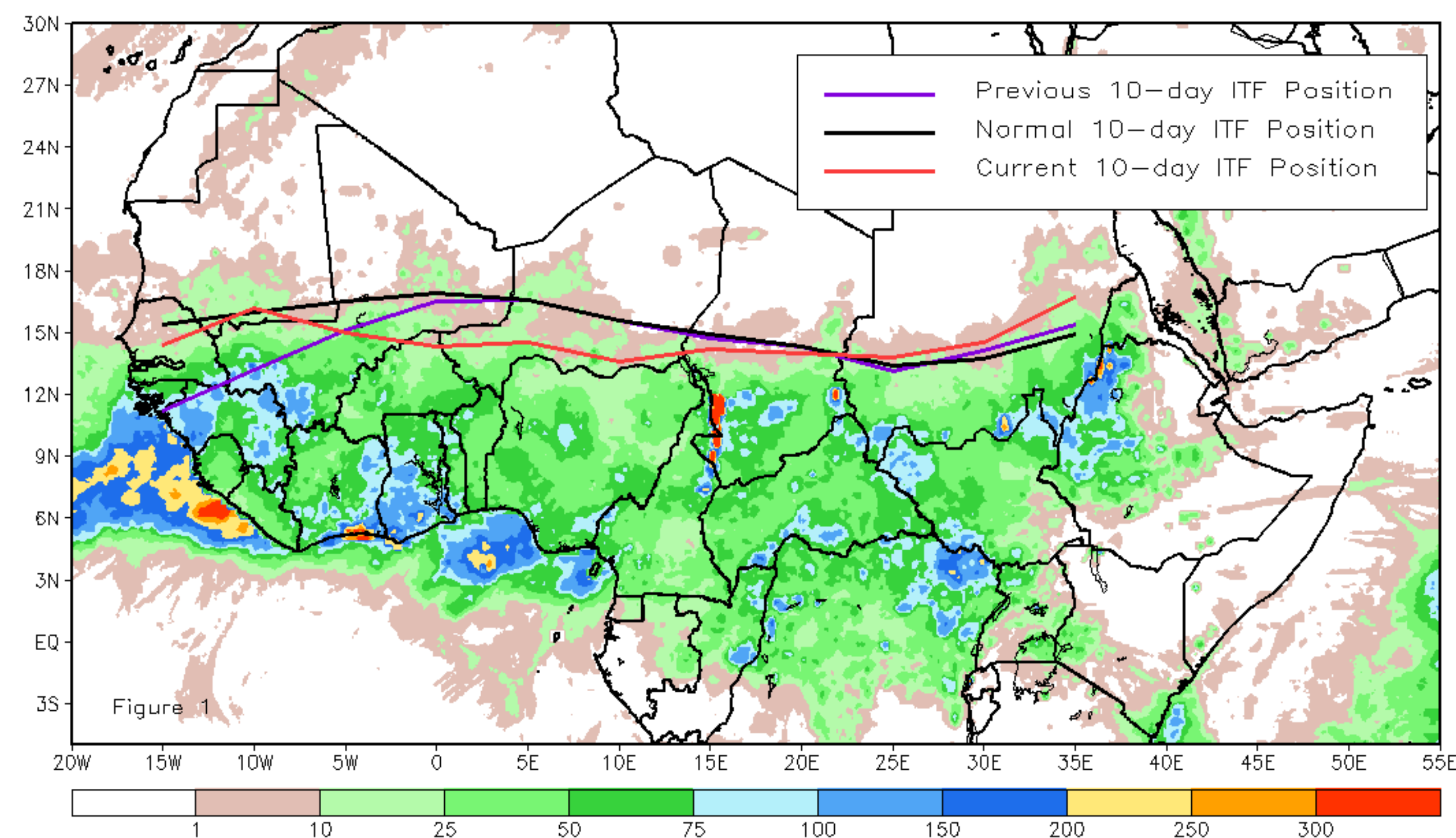
June 2024, Dekad 2

Discussion:

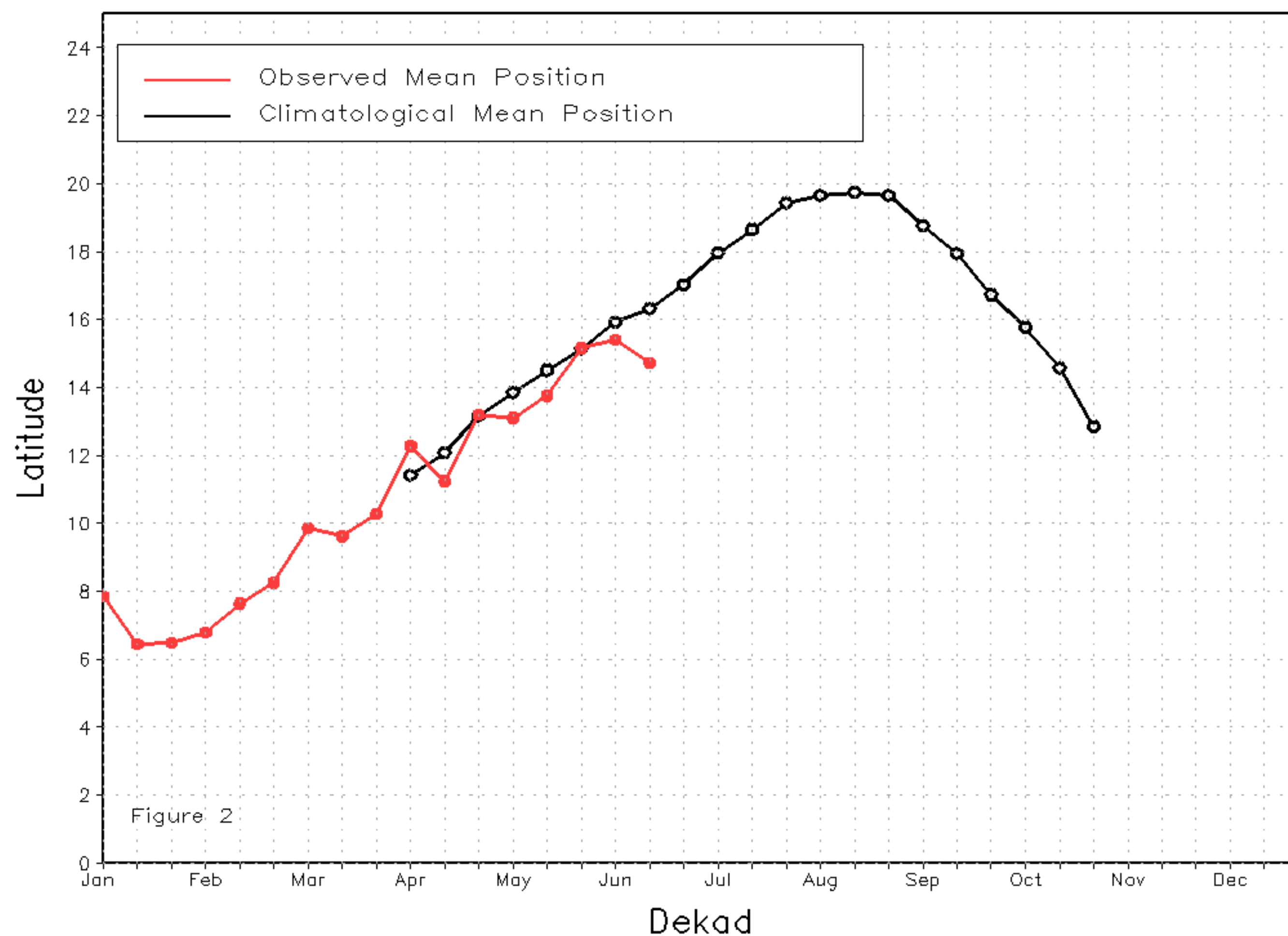
From June 11-20, the Inter-Tropical Front (ITF) moved southward along most of its length, except in Senegal, Mali, and Sudan, where it shifted northward relative to its previous position. The western (10W-10E) portion of the ITF was located approximately at 14.7N, which was below the climatological position by 1.6 degrees. Meanwhile, at the eastern (20E-35E) portion, the ITF was approximated at 14.8N, which was above the long-term average position by 0.7 degrees. Figure 1 displays the current position of the ITF relative to the climatological position during the 2nd dekad of June and its previous position during the 1st dekad of June. Figures 2 and 3 are time series, illustrating the latitudinal positions for the western and eastern portions of the ITF, respectively, and their seasonal evolutions since the beginning of April 2024.

Current vs. Normal Dekadal ITF Position
and RFE Accumulated Precipitation (mm)

June 2024, Dekad 2



Mean Western Portion of the ITF: Averaged 10W to 10E
As of: June 2024, Dekad 2



Mean Eastern Portion of the ITF: Averaged 20E to 35E
As of: June 2024, Dekad 2

