

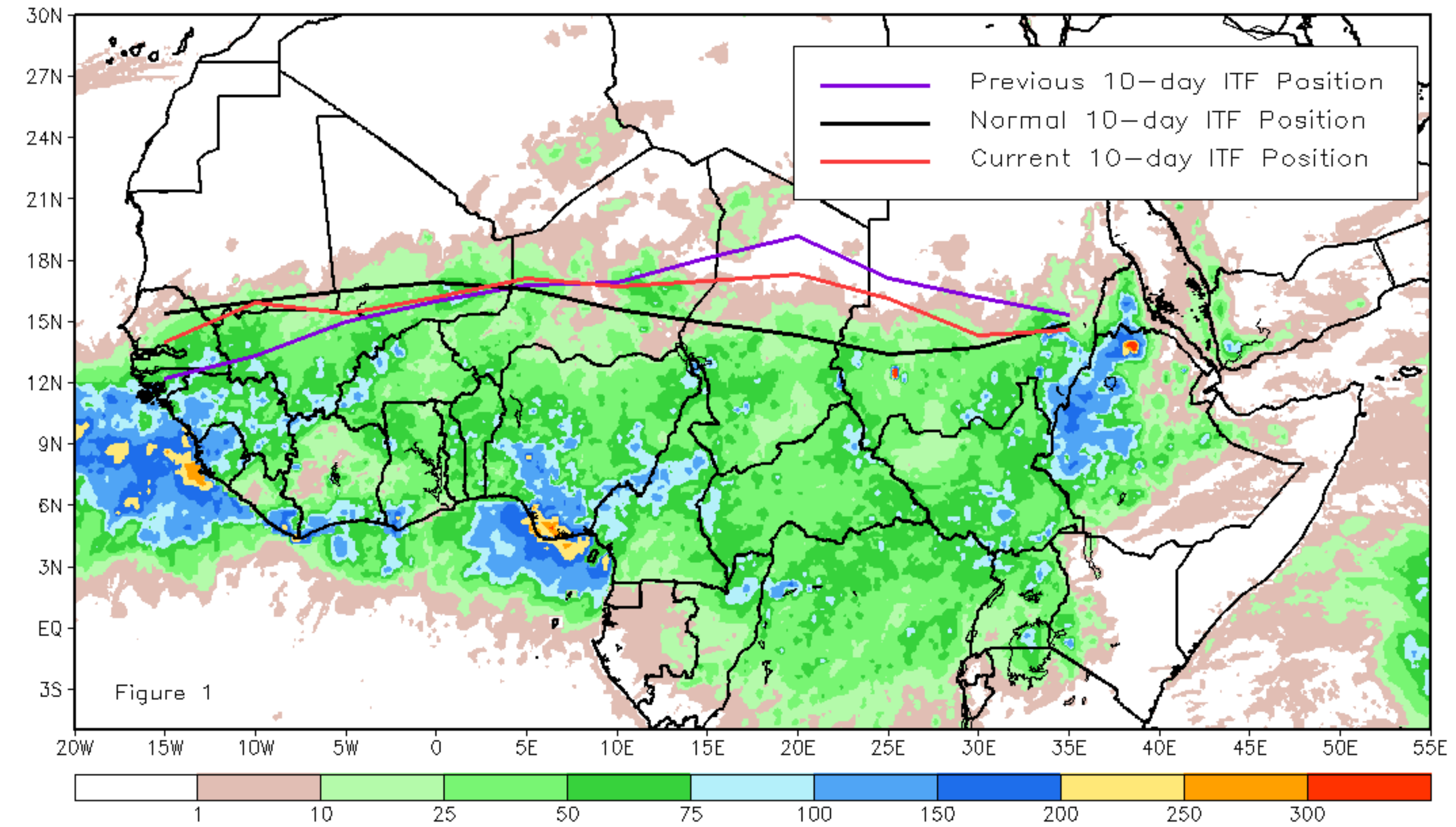


# CPC Africa Desk InterTropical (ITF) Front Analysis June 2023, Dekad 2

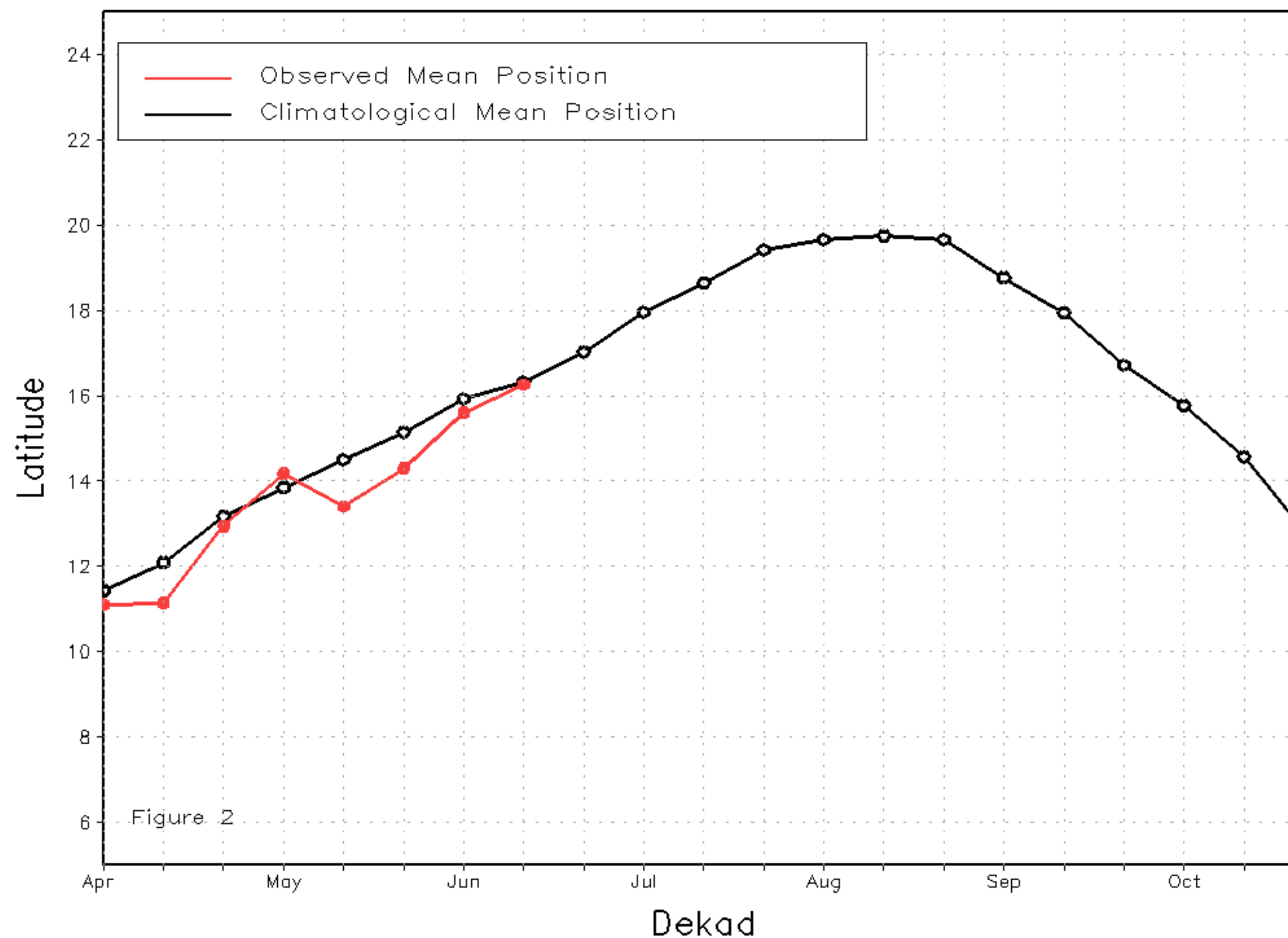
## Discussion:

From 11-20 June, the ITF propagated north (south) relative to the western (eastern) side of the previous position. The western (10W-10E) portion of the ITF was located approximately at 16.3N, which was the same as the climatological position. Also, at the eastern (20E-35E) portion, the ITF was approximated at 15.6N, which was much above the long-term average position by 1.5 degrees. Figure 1 displays the current position of the ITF relative to the climatological position during the 2nd dekad of June and its previous position during the 1st dekad of June. Figures 2 and 3 are time series, illustrating the latitudinal positions for the western and eastern portions of the ITF, respectively, and their seasonal evolutions since the beginning of April 2023.

Current vs. Normal Dekadal ITF Position  
and RFE Accumulated Precipitation (mm)  
June 2023, Dekad 2



Mean Western Portion of the ITF: Averaged 10W to 10E  
As of: June 2023, Dekad 2



Mean Eastern Portion of the ITF: Averaged 20E to 35E  
As of: June 2023, Dekad 2

