



# CPC Africa Desk InterTropical (ITF) Front Analysis

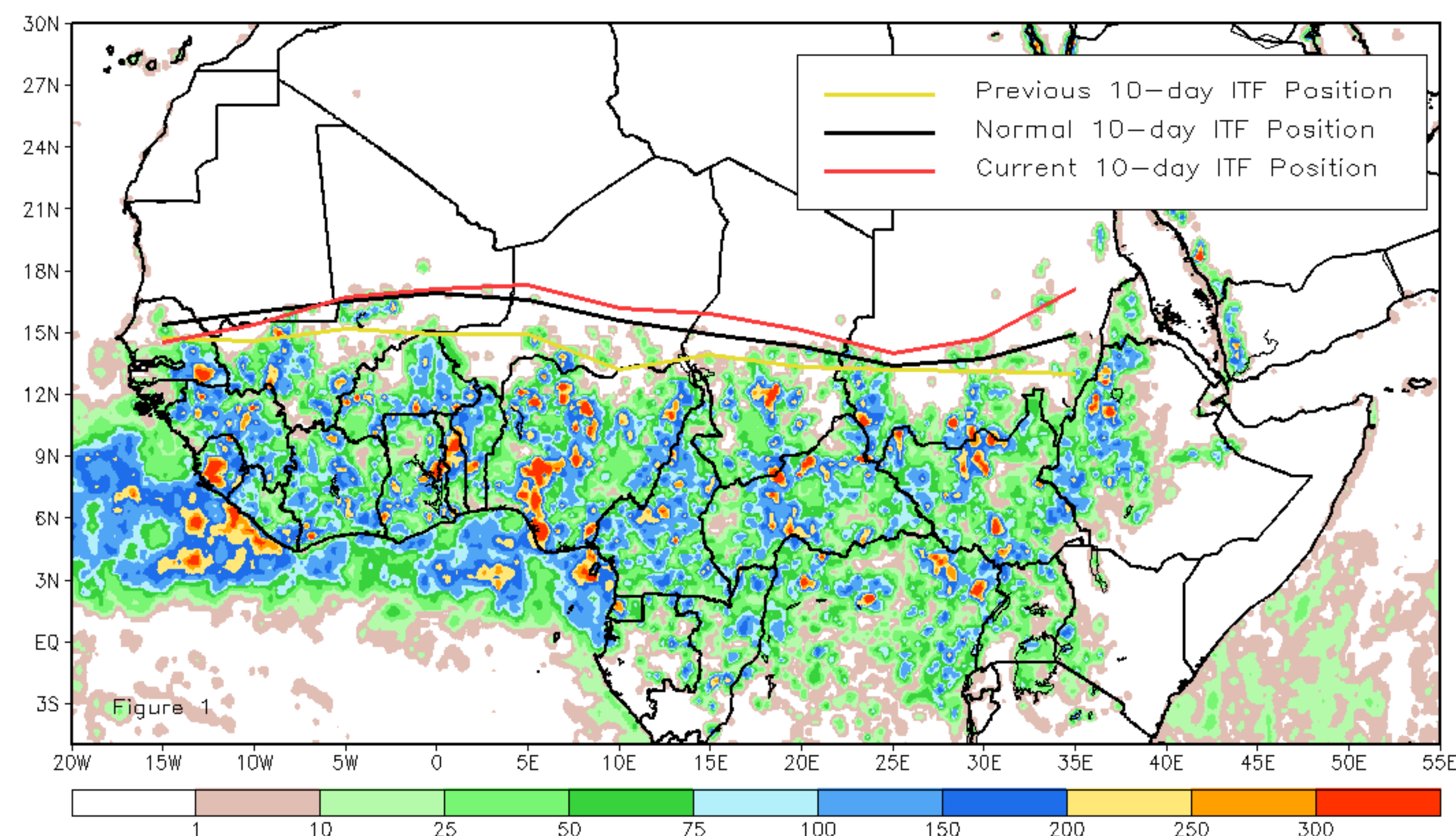
## June 2021, Dekad 2

### Discussion:

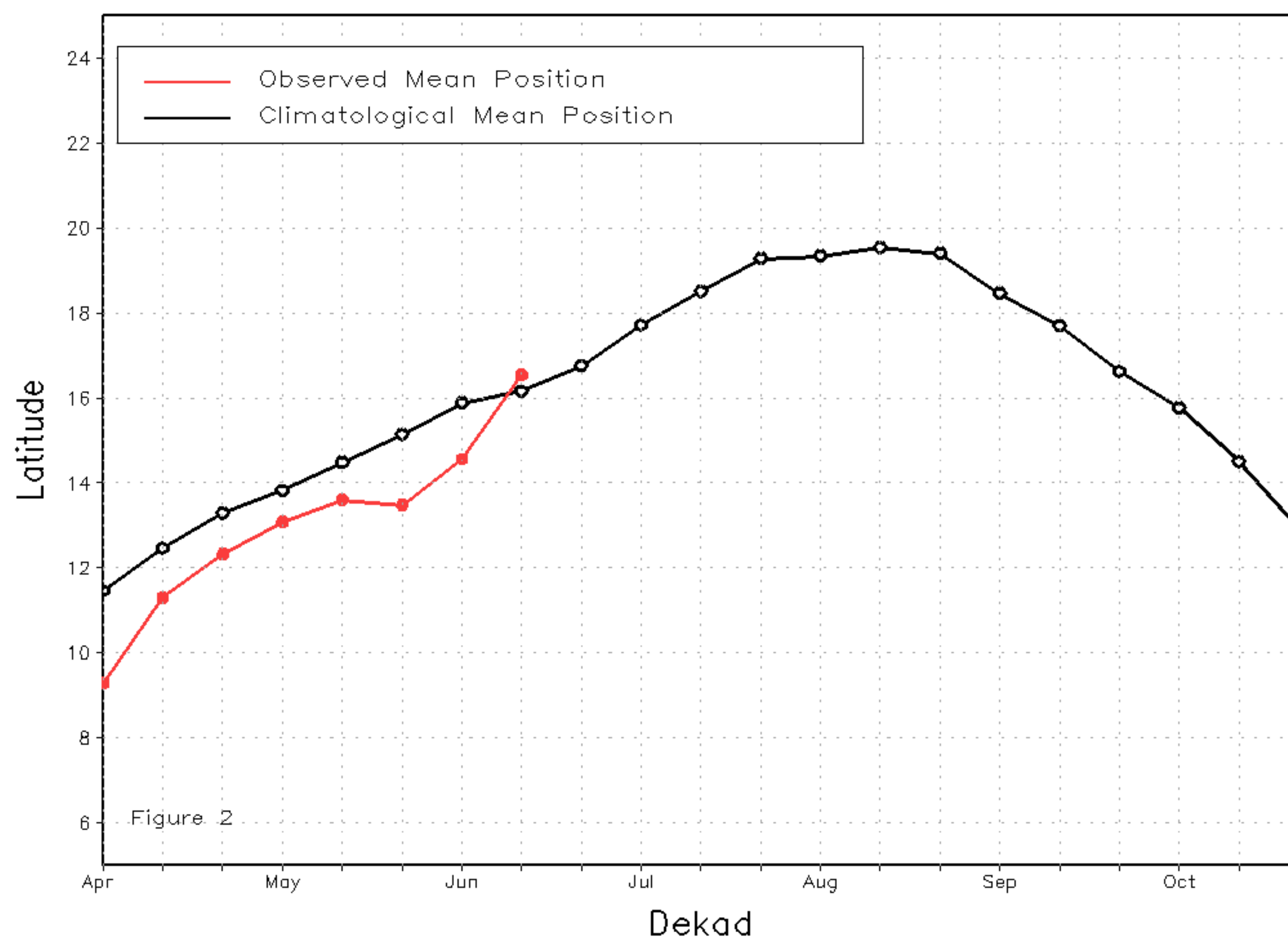
From 11-20 of June, the ITF has moved significantly further north passing the climatological position. The western (10W-10E) portion of the ITF was located approximately at 16.2N, whereas the average position was centered at 16.3N. This position of the ITF explains the increase rainfall across southern and central Senegal, and central Mali during the previous dekad. The eastern (20E-35E) portion of the ITF was located at 15.2N, which was north to the climatological position centered at 14.1N. This position could explain the increase of rainfall across southern Sudan and western Ethiopia. Figure 1 shows the current position of the ITF relative to the long-term average position during the 2nd dekad of June and its previous position during the 1st dekad of June. Figures 2 and 3 are time series, illustrating the latitudinal values of the western and eastern portions of the ITF, respectively, and their seasonal evolutions since the beginning of April, 2021.

Current vs. Normal Dekadal ITF Position  
and RFE Accumulated Precipitation (mm)

June 2021, Dekad 2



Mean Western Portion of the ITF: Averaged 10W to 10E  
As of: June 2021, Dekad 2



Mean Eastern Portion of the ITF: Averaged 20E to 35E  
As of: June 2021, Dekad 2

