



CPC Africa Desk InterTropical (ITF) Front Analysis

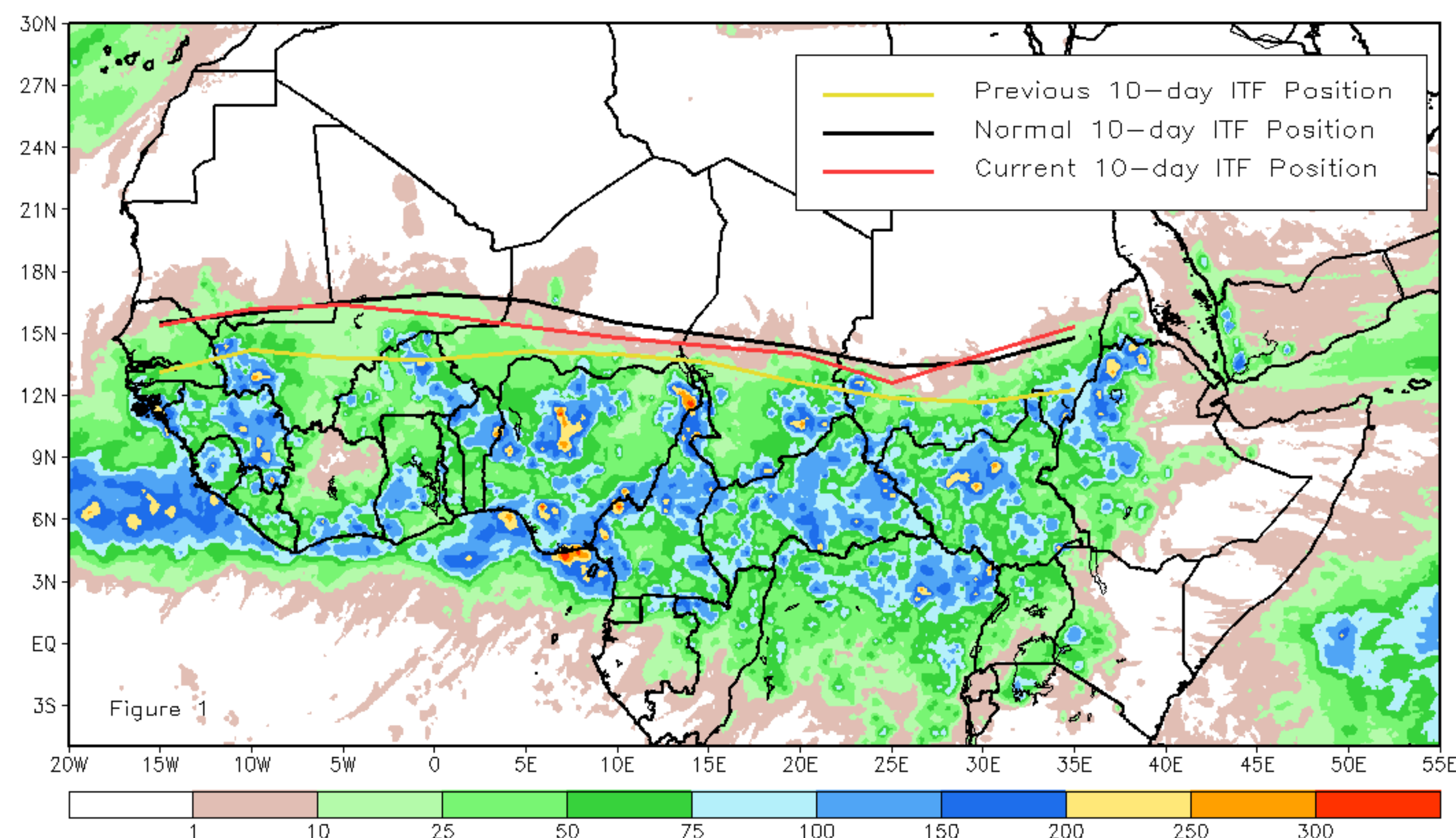
June 2020, Dekad 2

Discussion:

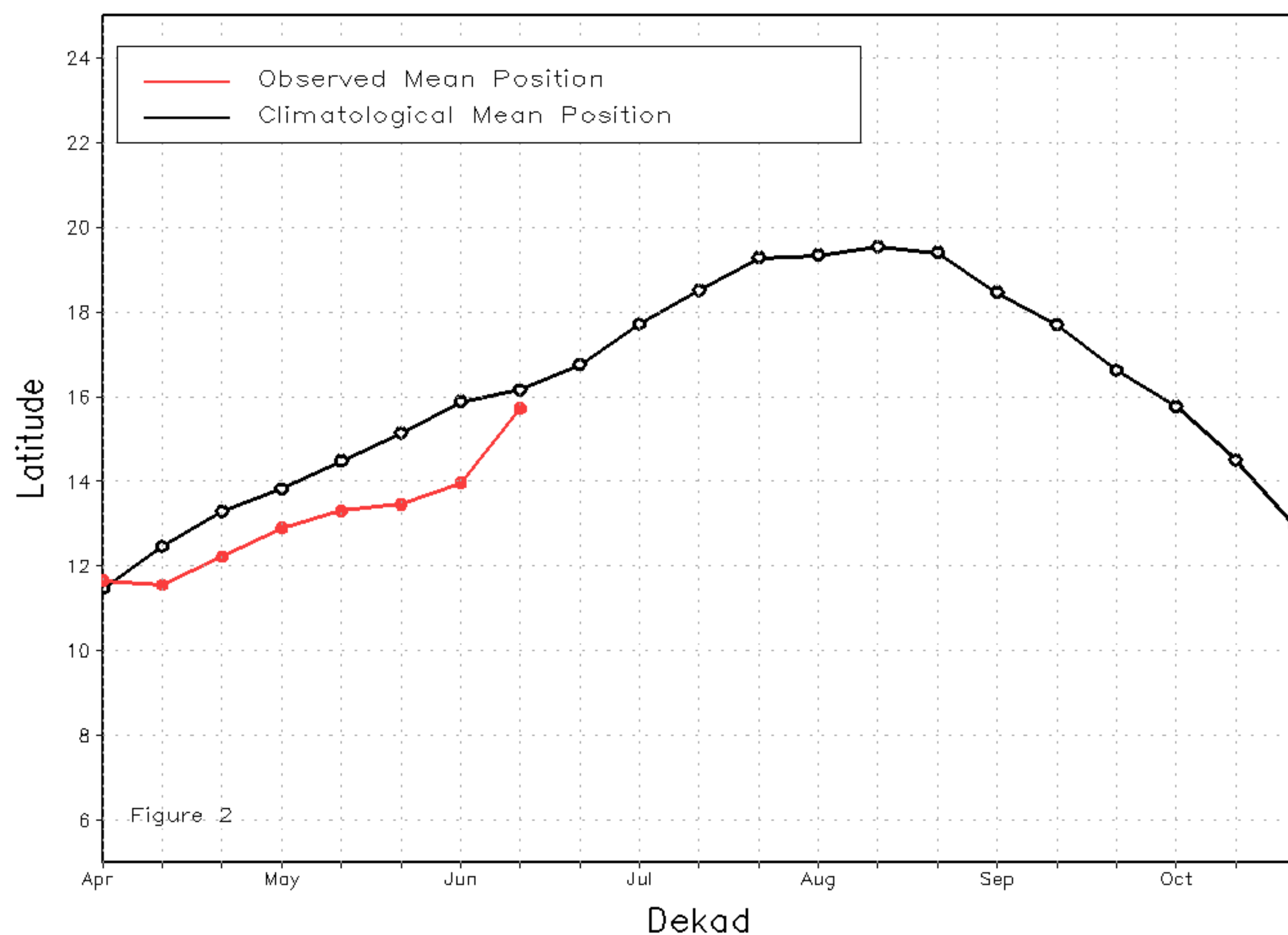
From June 11-20, the ITF has moved far northward and very close to the normal position in the western part of Africa compared to the past decade which could explain the increase of rainfall over the southern part of Mali, Burkina Faso and starting over the southern Niger. Meanwhile the western portion of the ITF did cross the normal position between 30E-35E. The southern part of Chad and Sudan have definitively started its rainy season while the western part of Ethiopia has already its onset a week earlier. The mean western (10W-10E) portion of the ITF was approximated at 15.6N, which is about 0.6 degree south of the normal. The mean eastern (20E-35E) portion of the ITF was located at 14N, which coincide with the long-term mean position. Figure 1 displays the current position of the ITF relative to the long-term climatological position during the 2nd dekad of June and its previous position during the 1st dekad of June. Figures 2 and 3 are time series, illustrating the latitudinal values of the western and eastern portions of the ITF, respectively, and their seasonal evolutions since April, 2020.

Current vs. Normal Dekadal ITF Position
and RFE Accumulated Precipitation (mm)

June 2020, Dekad 2



Mean Western Portion of the ITF: Averaged 10W to 10E
As of: June 2020, Dekad 2



Mean Eastern Portion of the ITF: Averaged 20E to 35E
As of: June 2020, Dekad 2

