



CPC Africa Desk InterTropical (ITF) Front Analysis

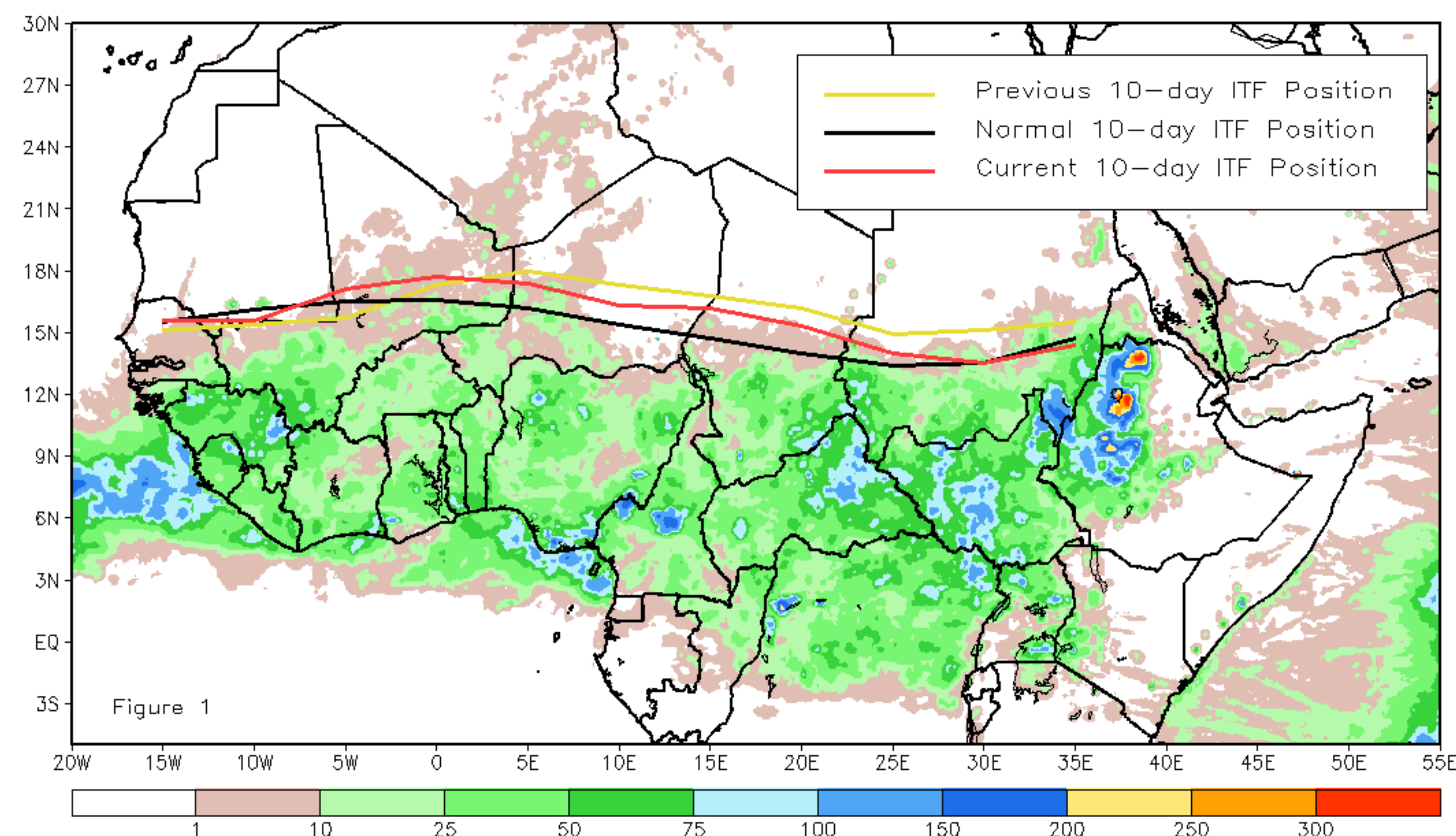
June 2019, Dekad 2

Discussion:

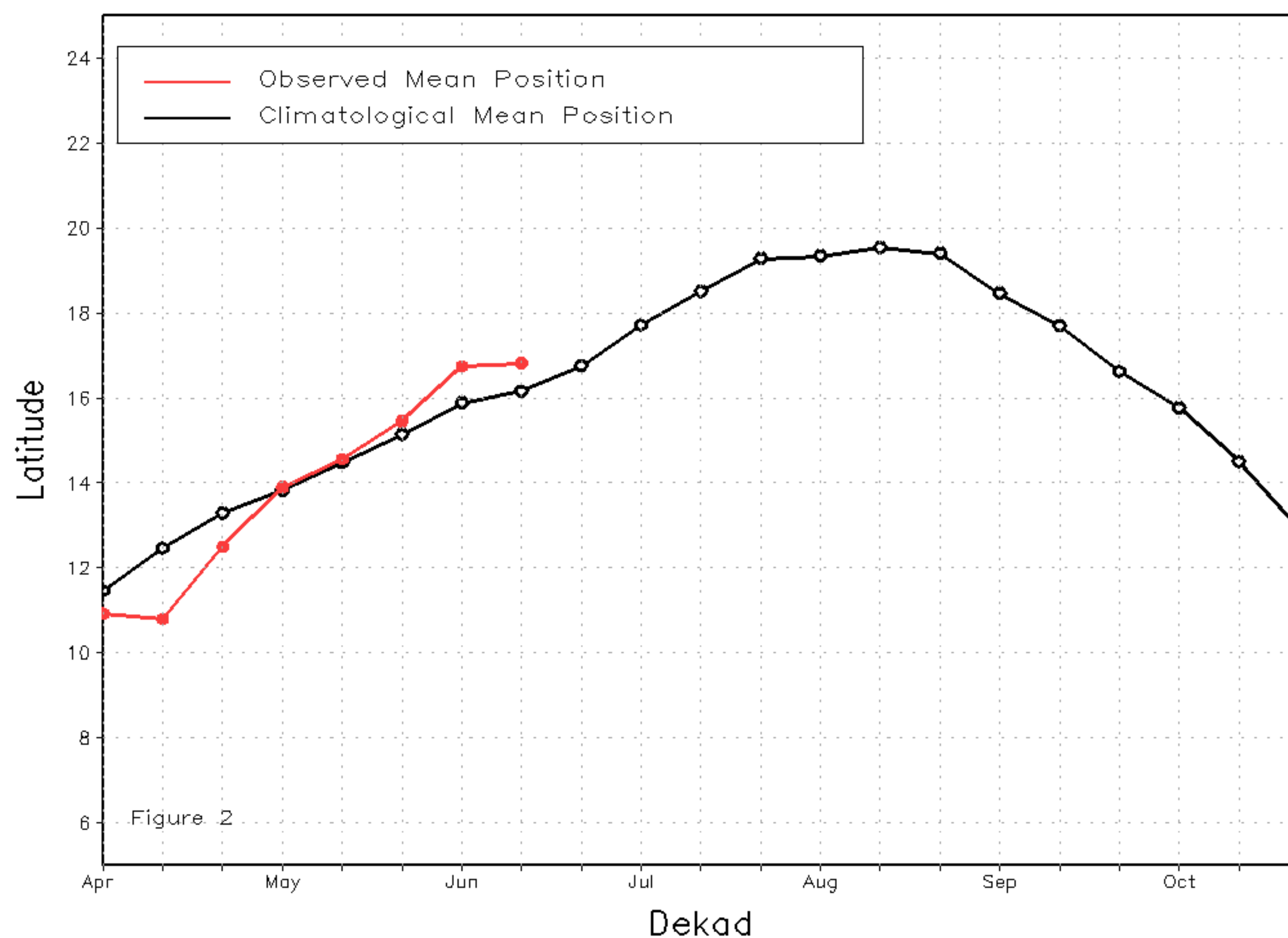
From June 11-20, the ITF between 15W-0E slightly moved compared to last decade. In contrast, the ITF between 0E-35E moved southward compared to the last decade. The mean western (15W-0E) portion of the ITF position is under 0.1 before 8W degree of the climatological average and the same degree compared to the last decade. In contrast, between 8W-0E the ITF position is over 0.1 degree of the climatological average and 0.2 compared to the last decade. This may have increased the chance of below-average rainfall over the coastline of Senegal and Guinea Bissau. Between 0E-35E, the ITF propagated substantially to the north contract southward and is approximated at 17N for the highest part part and 13N for the lowest part, which is a degree lower than the previous decade position. This reflect the observed above-average rainfall over southern Tchad, southern Niger, southern Sudan during the period. In contrast, its reflect the observed below-average rainfall over the horn of Africa including east Ethiopia. Figure 1 shows the current position of the ITF relative to the long-term average position during the 2nd decade of June and its previous position during the 1st decade of June. Figures 2 and 3 are time series, illustrating the latitudinal values of the western and eastern portions of the ITF, respectively, and their seasonal evolutions since April, 2019.

Current vs. Normal Dekadal ITF Position
and RFE Accumulated Precipitation (mm)

June 2019, Dekad 2



Mean Western Portion of the ITF: Averaged 10W to 10E
As of: June 2019, Dekad 2



Mean Eastern Portion of the ITF: Averaged 20E to 35E
As of: June 2019, Dekad 2

