



CPC Africa Desk InterTropical (ITF) Front Analysis

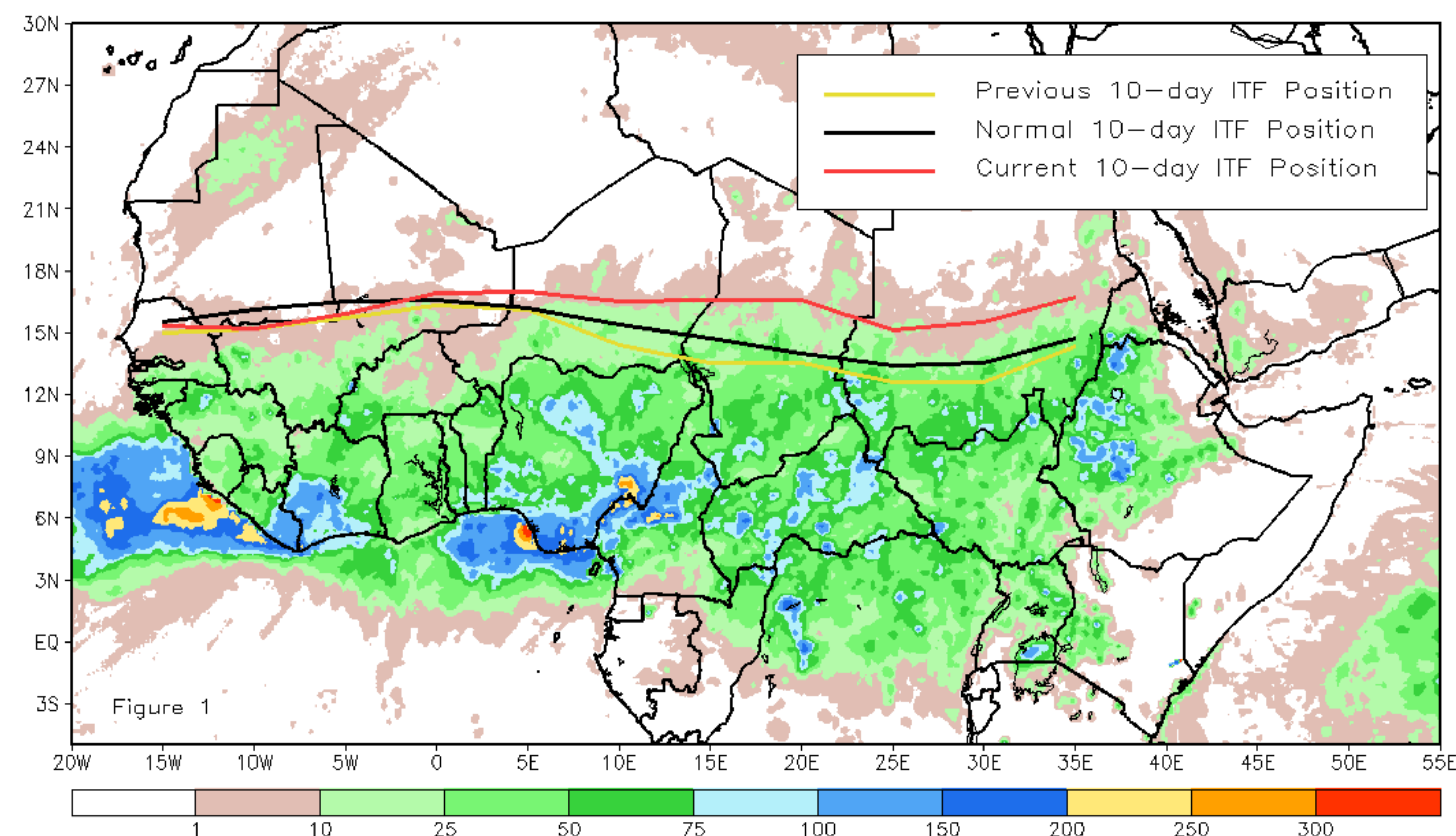
June 2018, Dekad 2

Discussion:

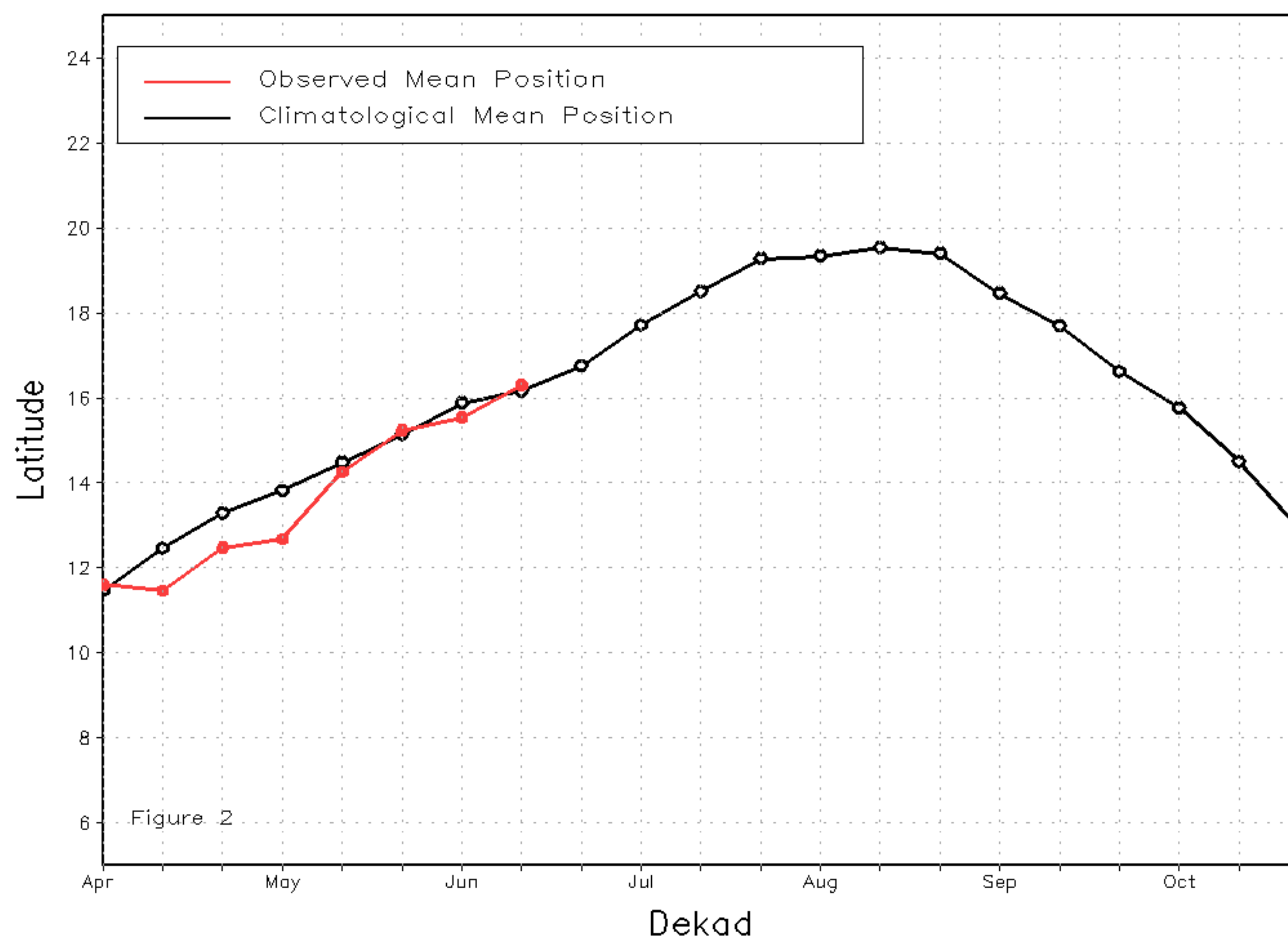
From June 11-20, the ITF exhibited a slight northward advancement in far western Africa, and a significant advancement in the eastern hemisphere during the middle of June. The mean western (10W-10E) portion of the ITF was approximated at 16.3N, rising slightly above the climatological normal position by 0.1 degree. The mean eastern (20E - 35E) portion of the ITF was approximated at 16.0N, significantly well above the climatological mean position (13.9N) by a remarkable 2.1 degrees. This latest eastern ITF portion anomaly is the highest on record for mid-June going back to the start of the ITF record in 1989, breaking the former mid-June record held in 1995 (15.1N) by nearly an entire degree. Figure 1 shows the current position of the ITF relative to the mean climatological (black) position during the 2nd dekad of June and its previous (yellow) position during the 1st dekad of June. Figures 2 and 3 are time series, illustrating the mean latitudinal values of the western and eastern portion of the ITF, respectively, and their seasonal evolution compared to climatology since April, 2018.

Current vs. Normal Dekadal ITF Position
and RFE Accumulated Precipitation (mm)

June 2018, Dekad 2



Mean Western Portion of the ITF: Averaged 10W to 10E
As of: June 2018, Dekad 2



Mean Eastern Portion of the ITF: Averaged 20E to 35E
As of: June 2018, Dekad 2

