



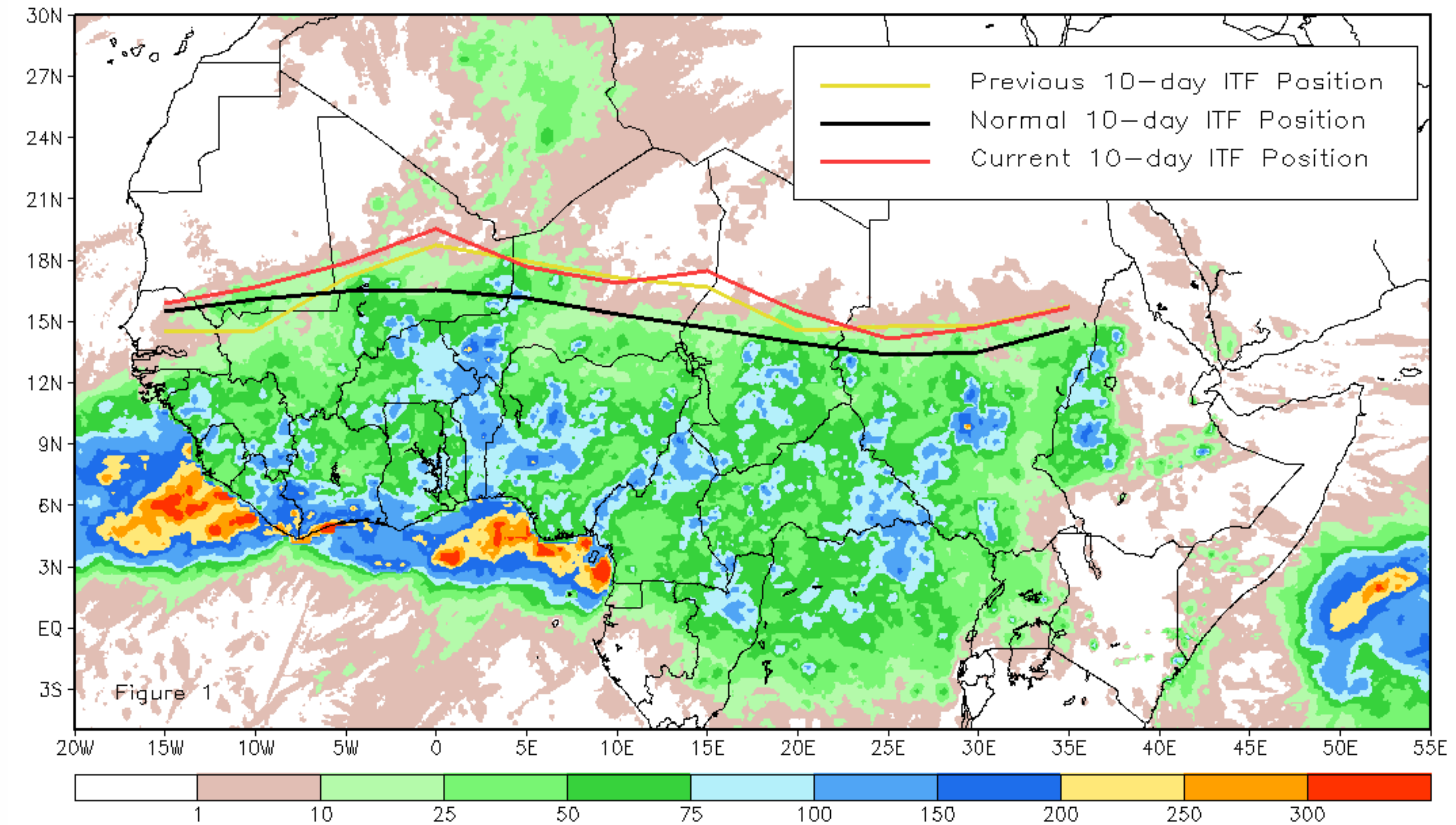
# CPC Africa Desk InterTropical (ITF) Front Analysis

## June 2017, Dekad 2

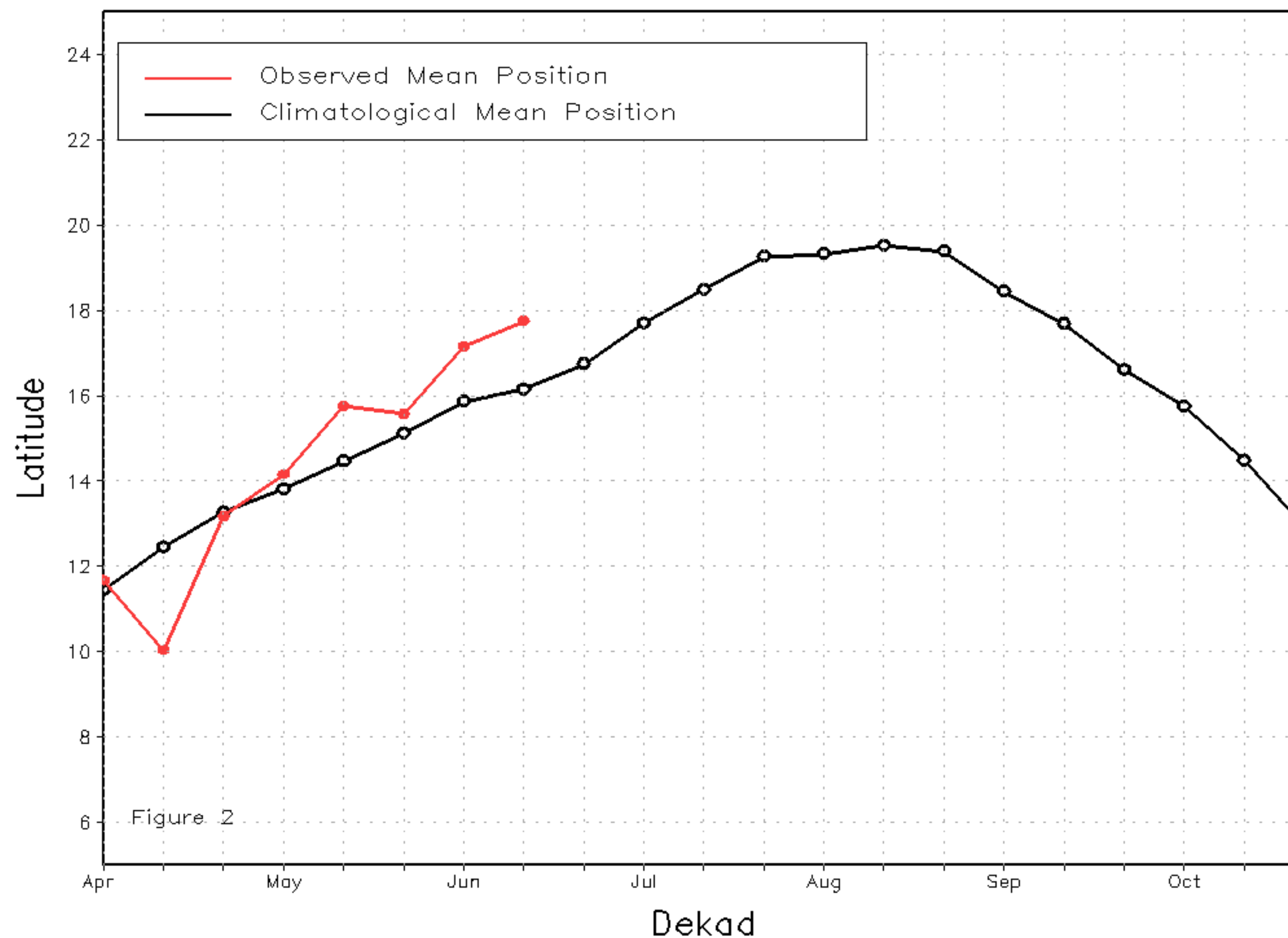
### Discussion:

From June 11-20, the ITF advanced slightly to the north relative to its position during the 1st dekad (10-day) of June and remained above its long-term average position during this time of the year. The mean western (10W-10E) portion of the ITF was located approximately at 17.8N, while the average position is at 16.2N. The mean eastern (20E-35E) portion of the ITF was approximated at 15N, whereas the mean position during this time of the year is at 13.9N. The anomalously north position of the ITF resulted in above-average rain throughout many areas of both West Africa and the Eastern Africa. Figure 1 shows the current position of the ITF relative to its climatological position during the 2nd dekad of June and its previous position during the 1st dekad of June. Figures 2 and 3 are time series, illustrating the mean latitudinal values of the western and eastern portion of the ITF, respectively, and their evolutions since April, 2017.

Current vs. Normal Dekadal ITF Position  
and RFE Accumulated Precipitation (mm)  
June 2017, Dekad 2



Mean Western Portion of the ITF: Averaged 10W to 10E  
As of: June 2017, Dekad 2



Mean Eastern Portion of the ITF: Averaged 20E to 35E  
As of: June 2017, Dekad 2

