



CPC Africa Desk InterTropical (ITF) Front Analysis

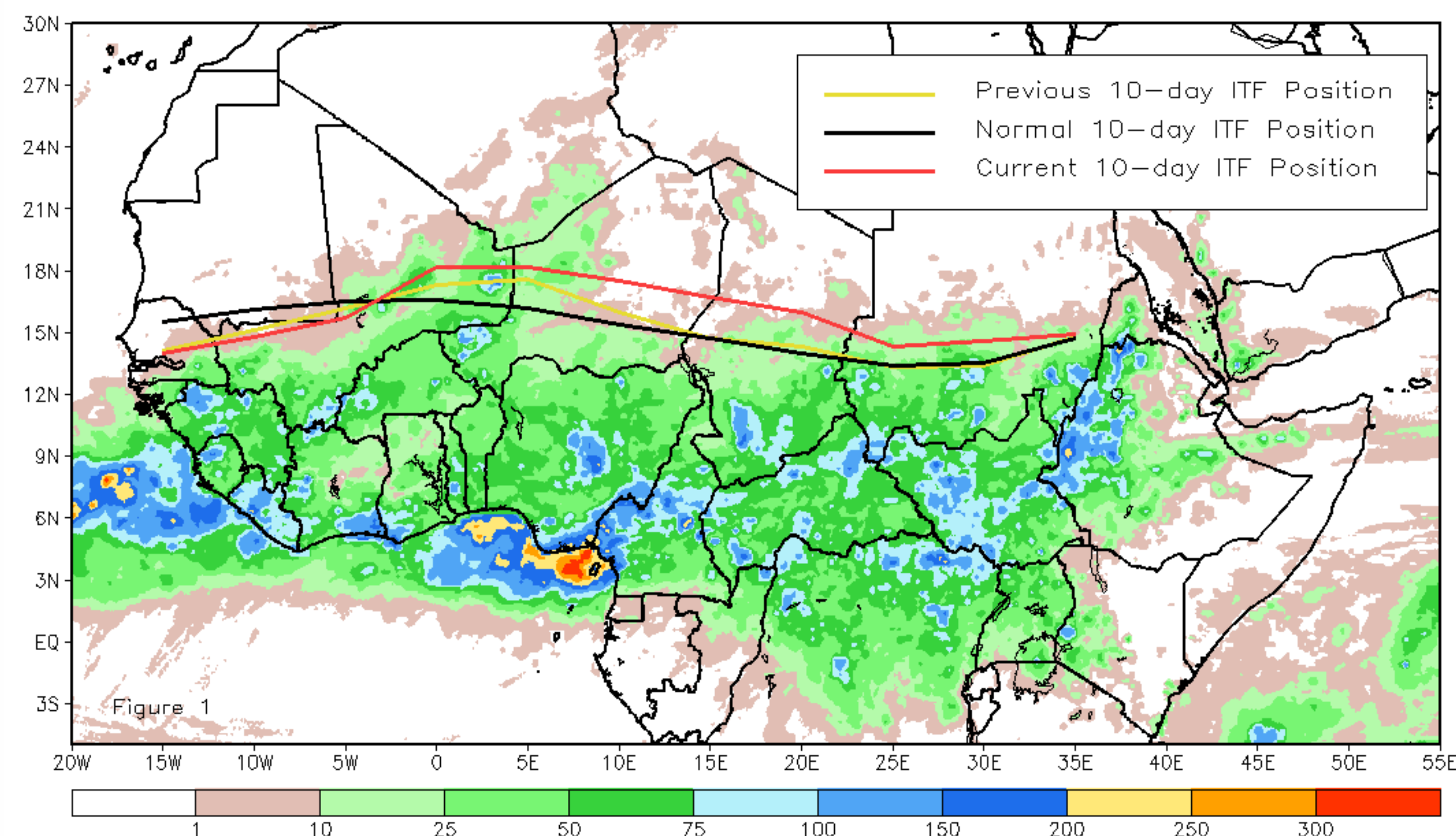
June 2016, Dekad 2

Discussion:

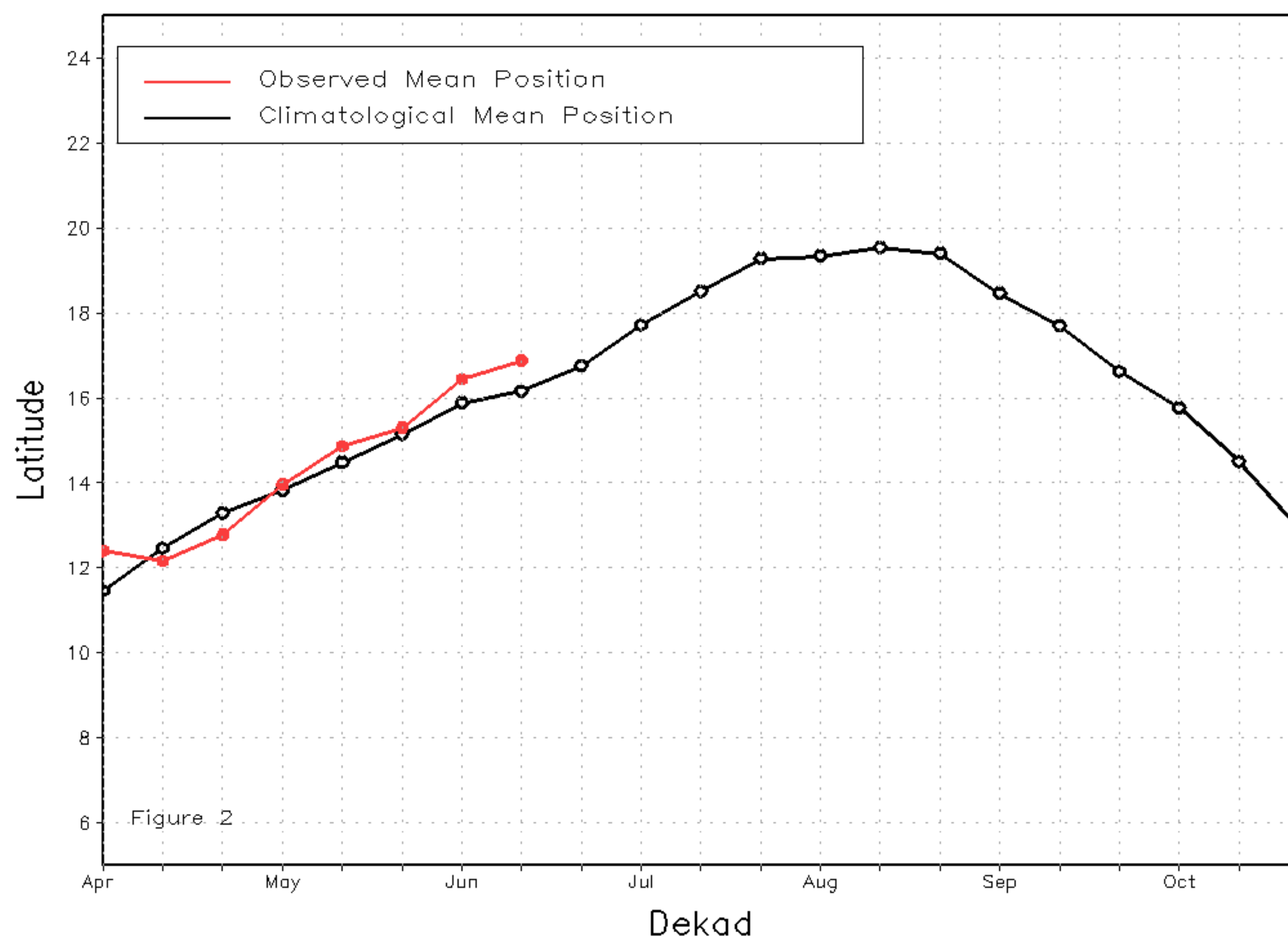
From June 11-20, the Inter-tropical Front (ITF) continued its northward advancement, with a marked movement over the central portions of West Africa. The mean western (10W-10E) portion of the ITF was located at 16.9N and was to the north of the average position by 0.7 degree. This anomalous northerly position produced above-average rainfall as far north as eastern Mali and northwestern Niger. Meanwhile, the mean eastern (20E-35E) portion of the ITF was centered upon 14.9N, which was also to the north of the average value by 1 degree. The above-average position contributed to wetness, observed over Sudan and South Sudan. Figure 1 displays the current position of the ITF relative to its climatological position during the 2nd dekad of June and its previous position during the 1st dekad of June. Figures 2 and 3 are time series, illustrating the mean latitudinal values of the western and eastern portion of the ITF, respectively, and their evolutions since April, 2016.

Current vs. Normal Dekadal ITF Position
and RFE Accumulated Precipitation (mm)

June 2016, Dekad 2



Mean Western Portion of the ITF: Averaged 10W to 10E
As of: June 2016, Dekad 2



Mean Eastern Portion of the ITF: Averaged 20E to 35E
As of: June 2016, Dekad 2

