



# CPC Africa Desk InterTropical (ITF) Front Analysis

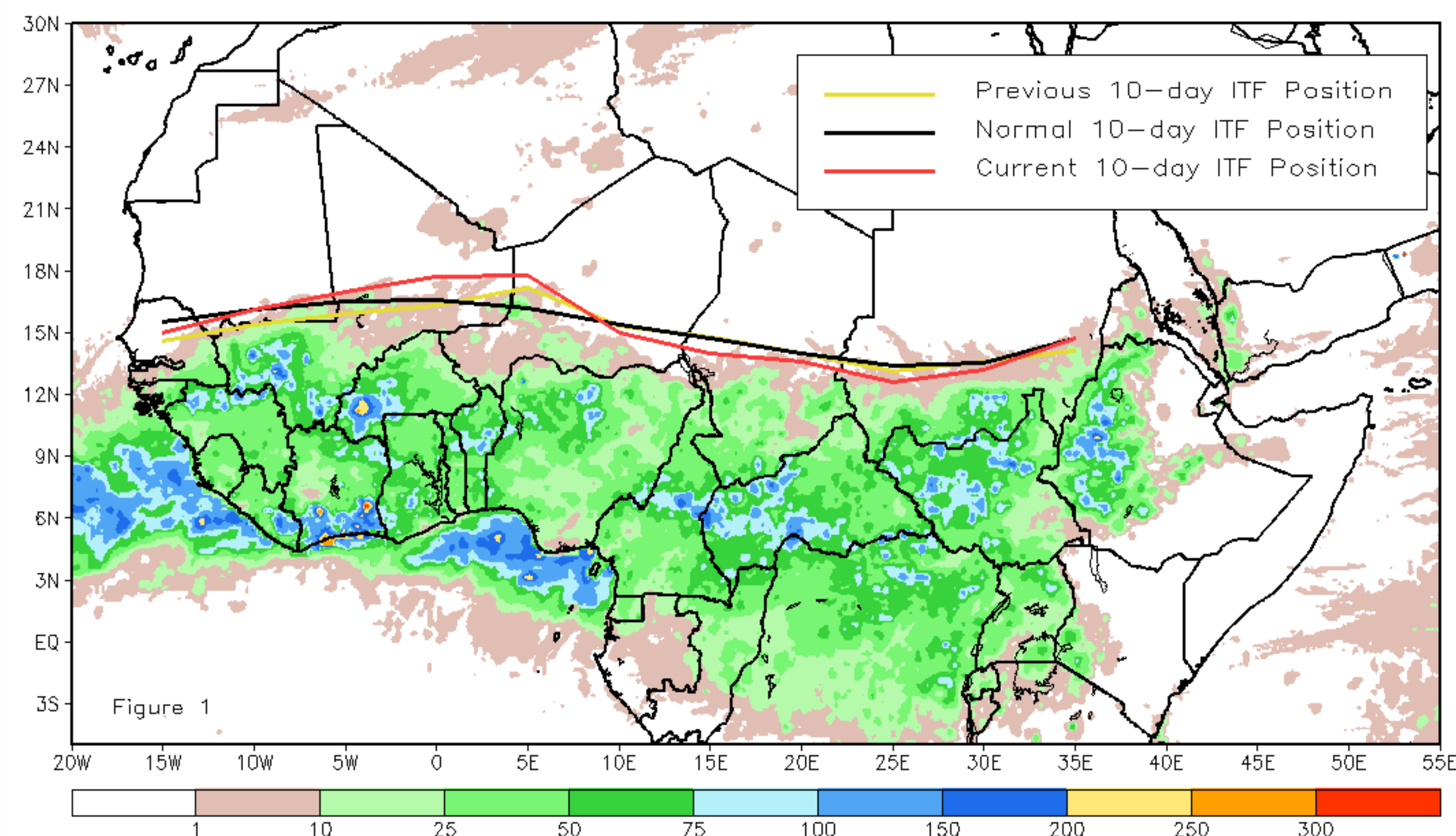
## June 2014, Dekad 2

### Discussion:

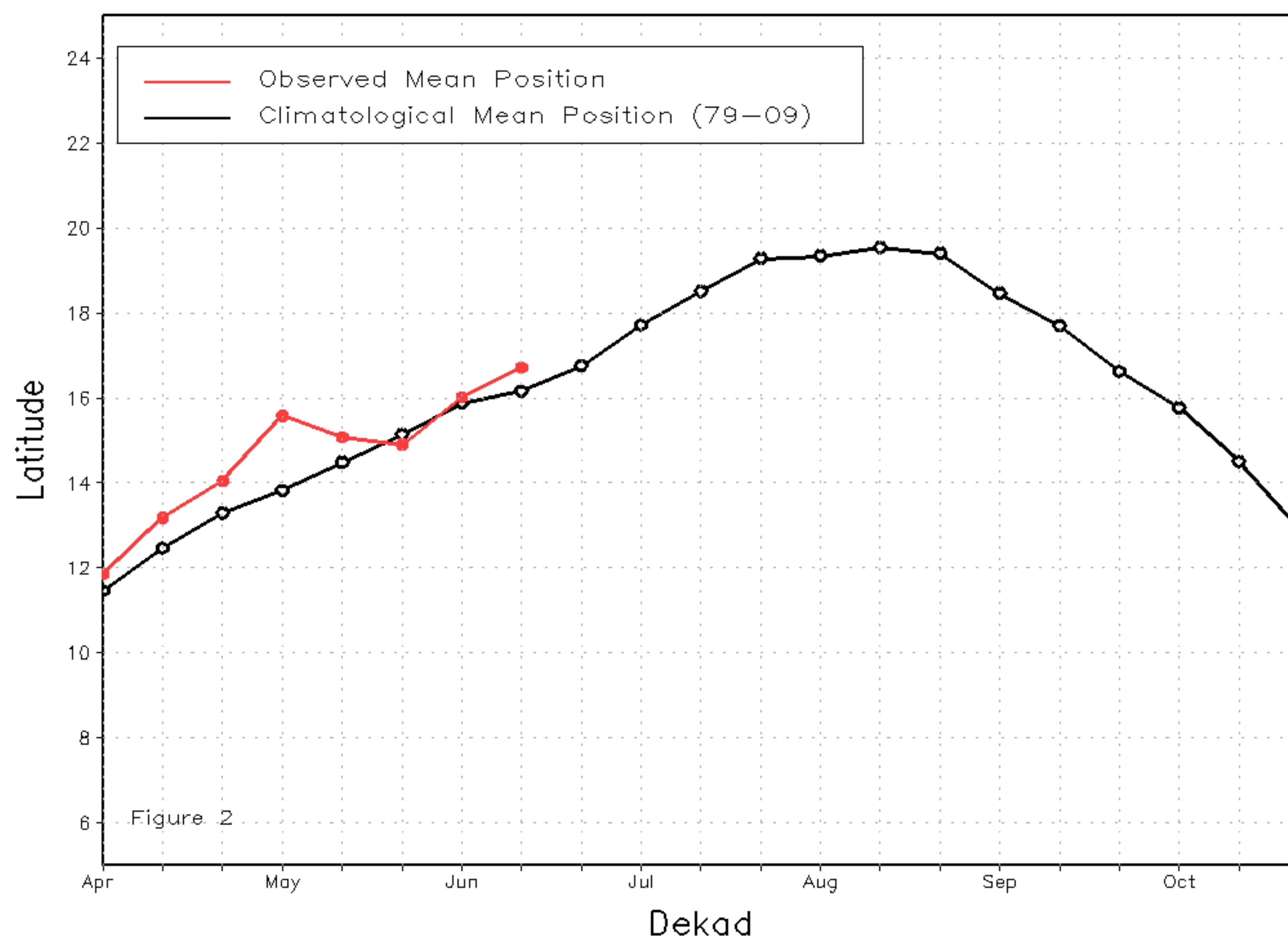
From June 11-20, 2014, the ITF continued to progress equatorward over the eastern portion while moving seasonally poleward in the west. The mean western portion of the ITF (10W-10E) was located approximately at 16.7 degrees North, which is 0.5 degrees north of the mean climatological position and 0.7 degrees north of the previous dekads position. Southerly winds helped to push the ITF and moisture north across the Sahel during the past dekad resulting in light rainfall in central Mali and Niger. The mean eastern portion of the ITF (20E-35E) was located approximately at 13.5 degrees North, which is 0.4 degrees south of the mean climatological position and 0.2 degrees south of the previous dekads position. This marked the second consecutive dekad where the ITF progress equatorward across eastern Africa. Rainfall was slightly below average across parts of Sudan as a result. Figure 1 shows the current ITF position relative to its long-term average position during the second dekad of June and its previous position during the first dekad of June. Figures 2 and 3 are time series, illustrating the mean latitudinal values of the western and eastern portion of the ITF, respectively, and their evolutions since April, 2014.

Current vs. Normal Dekadal ITF Position  
and RFE Accumulated Precipitation (mm)

June 2014, Dekad 2



Mean Western Portion of the ITF: Averaged 10W to 10E  
As of: June 2014, Dekad 2



Mean Eastern Portion of the ITF: Averaged 20E to 35E  
As of: June 2014, Dekad 2

