



# CPC Africa Desk InterTropical (ITF) Front Analysis

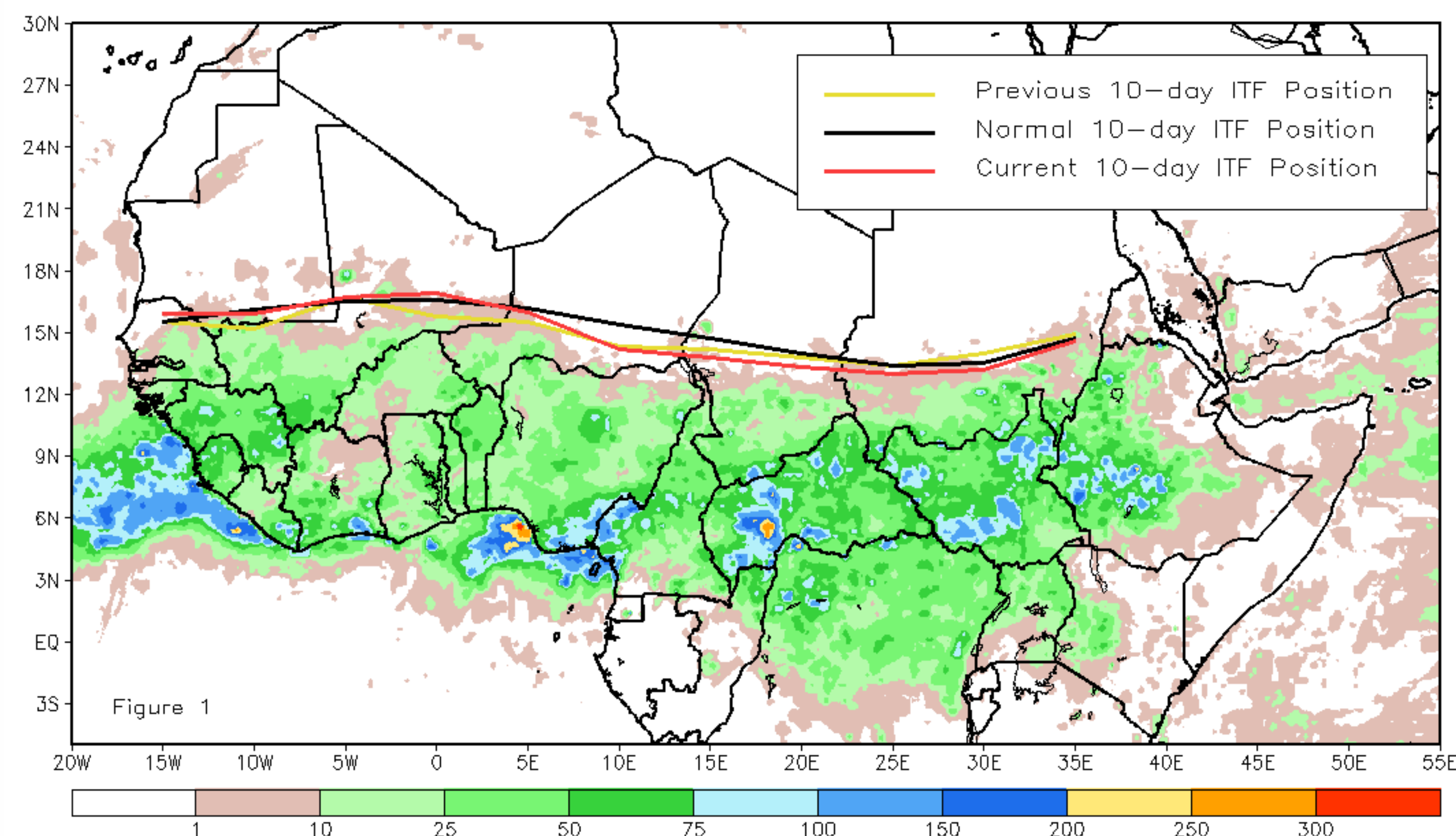
## June 2013, Dekad 2

### Discussion:

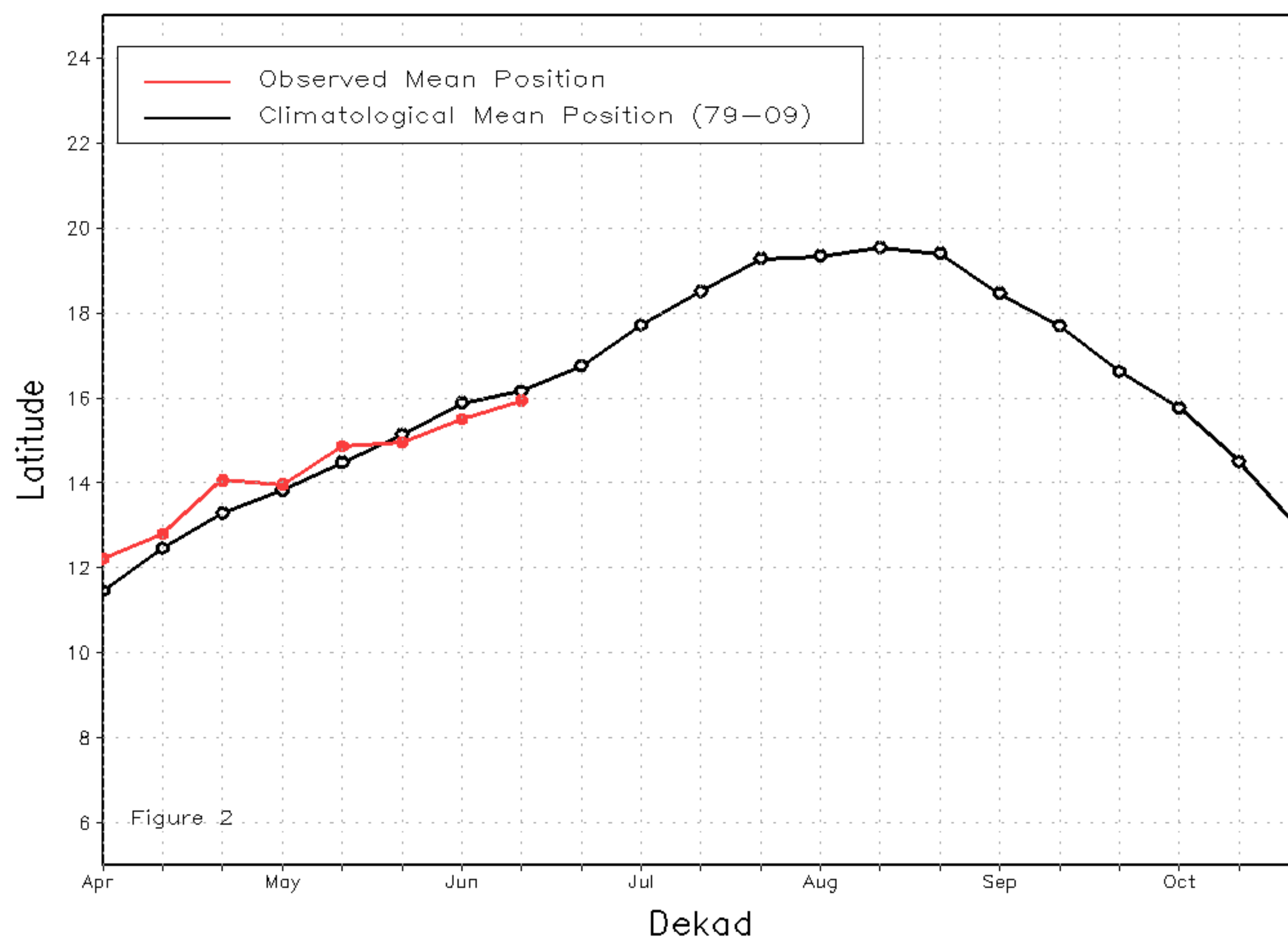
From June 11-20, 2013, the ITF fell behind the climatological mean position across both eastern and western portions. The mean western portion of the ITF (10W-10E) was located approximately at 15.9 degrees North, which was 0.3 degrees south of the mean climatological position and 0.4 degrees north of the previous dekads position. Negative rainfall anomalies were present across much of western Africa during the dekad. This marked the third consecutive dekad where the mean western position was south of climatology. The mean eastern portion of the ITF (20E-35E) was located approximately at 13.5 degrees North, which was 0.5 degrees south of the previous dekads position and 0.4 degrees south of the mean climatological position. After two consecutive dekads of poleward movement of the ITF, this past dekad saw an equatorward retreat across eastern portions of the ITF. Dekadal rains were below average in Chad and the Darfur region of Sudan. Figure 1 shows the current ITF position relative to its long-term average position during the second dekad of June and its previous position during the first dekad of June. Figures 2 and 3 are time series, illustrating the mean latitudinal values of the western and eastern portion of the ITF, respectively, and their evolutions since April, 2013.

Current vs. Normal Dekadal ITF Position  
and RFE Accumulated Precipitation (mm)

June 2013, Dekad 2



Mean Western Portion of the ITF: Averaged 10W to 10E  
As of: June 2013, Dekad 2



Mean Eastern Portion of the ITF: Averaged 20E to 35E  
As of: June 2013, Dekad 2

