



# CPC Africa Desk InterTropical (ITF) Front Analysis

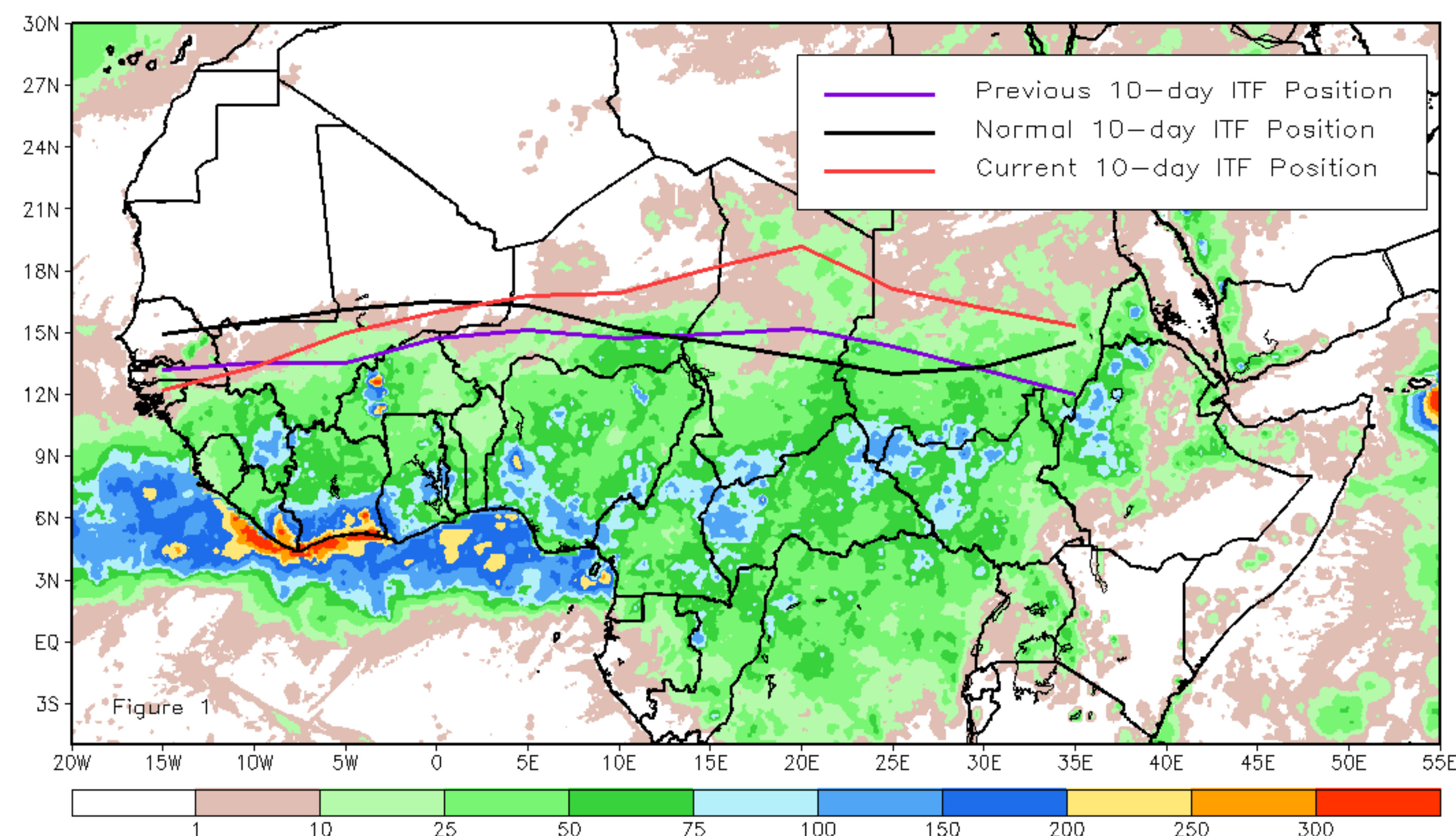
## June 2023, Dekad 1

### Discussion:

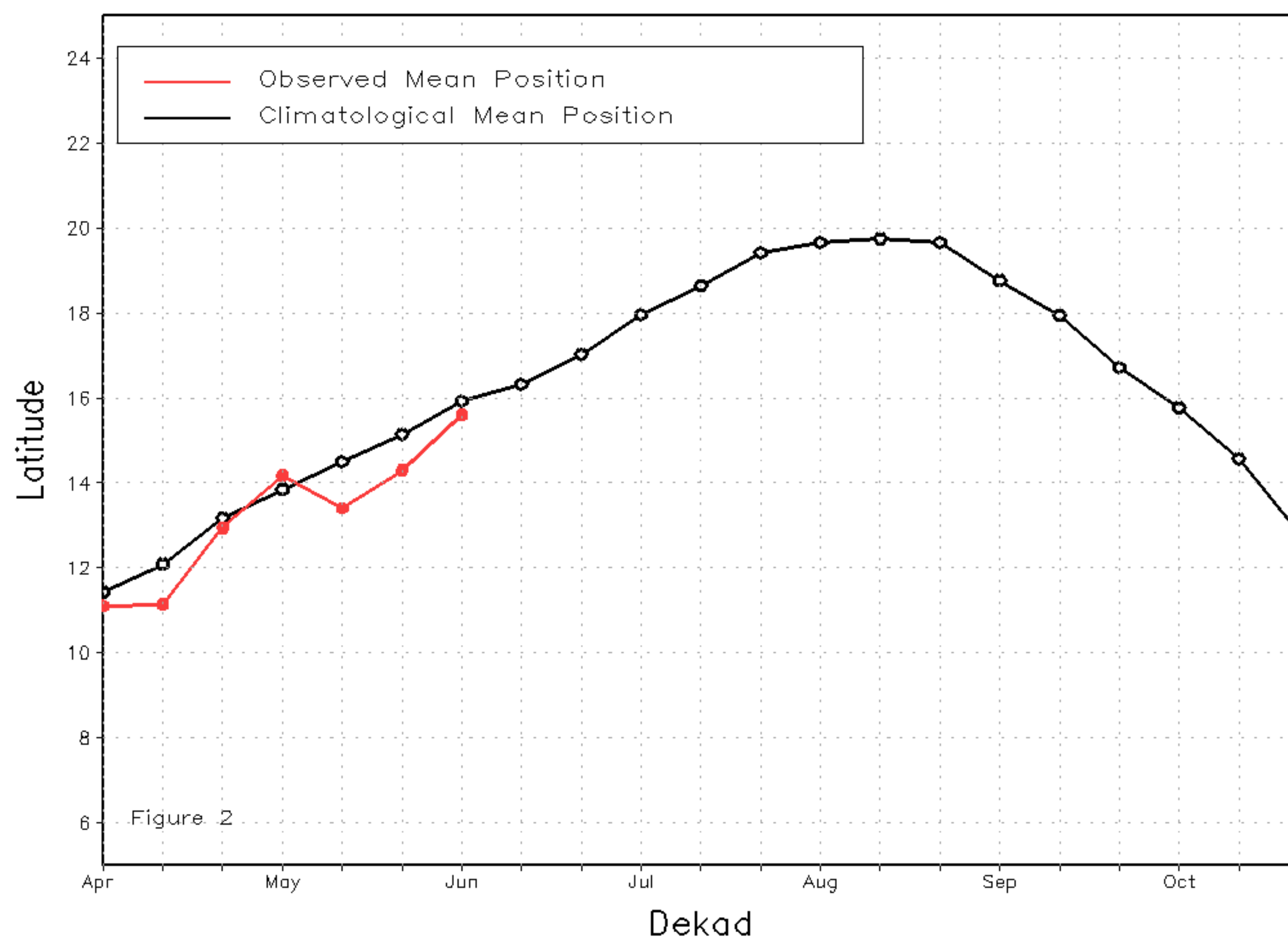
From 1-10 June, the ITF propagated significantly farther north relative to its previous position along the majority of its length, except in Senegal. The western (10W-10E) portion of the ITF was located approximately at 15.6N, which was below the climatological position by 0.3 degree. Also, at the eastern (20E-35E) portion, the ITF was approximated at 17.0N, which was much above the long-term average position by 3.4 degrees. This was a large jump from the previous dekad and was accompanied by a surge of moisture and anomalous rainfall over Chad and Sudan. Figure 1 displays the current position of the ITF relative to the climatological position during the 1st dekad of June and its previous position during the 3rd dekad of May. Figures 2 and 3 are time series, illustrating the latitudinal positions for the western and eastern portions of the ITF, respectively, and their seasonal evolutions since the beginning of April 2023.

Current vs. Normal Dekadal ITF Position  
and RFE Accumulated Precipitation (mm)

June 2023, Dekad 1



Mean Western Portion of the ITF: Averaged 10W to 10E  
As of: June 2023, Dekad 1



Mean Eastern Portion of the ITF: Averaged 20E to 35E  
As of: June 2023, Dekad 1

