



CPC Africa Desk InterTropical (ITF) Front Analysis

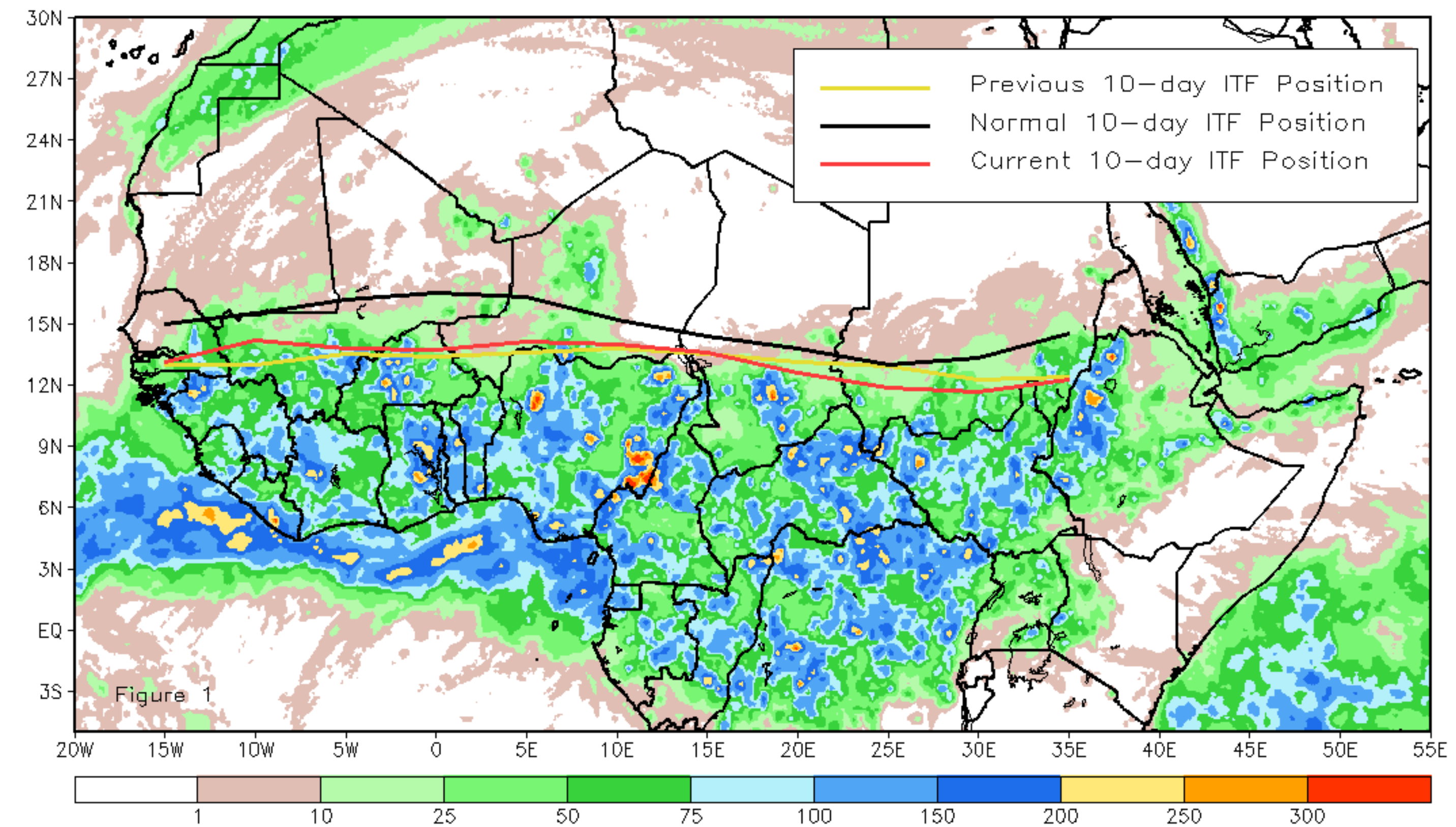
June 2020, Dekad 1

Discussion:

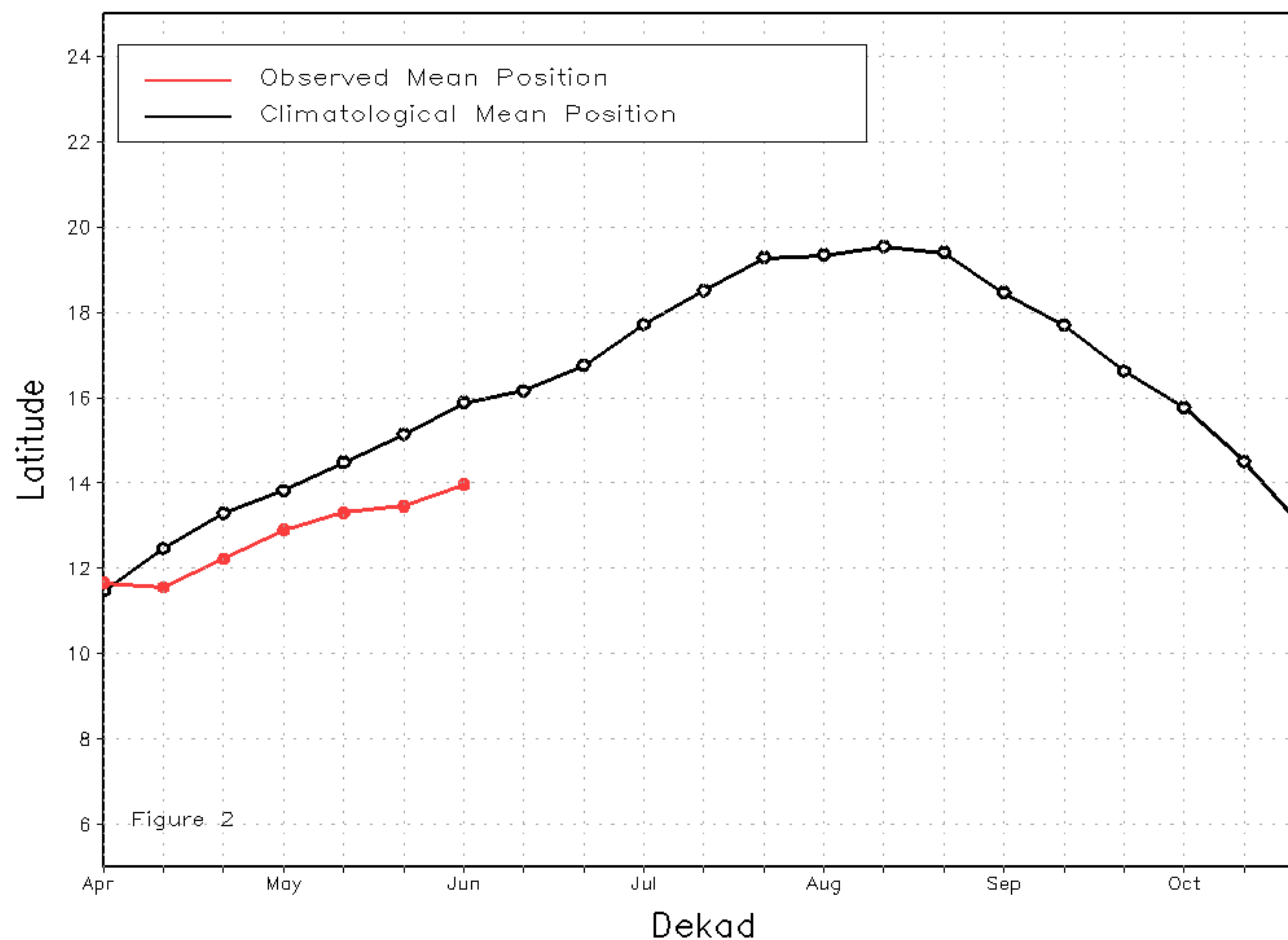
From June 01-10, the ITF has moved further northward in the western part of Africa compared to the past decade which could explain the increase of rainfall over the southern part of Senegal, Mali and over Burkina Faso. The eastern part of Nigeria has definitively started its rainy season while the southern part has already its onset since May. In contrast, the ITF has moved nearly southward between 20E-35E compared to the previous decade which could explain the struggling start of rainy season over the southern part of Chad. The mean western (10W-10E) portion of the ITF was approximated at 14.1N, which is about 1.9 degree south of the normal. The mean eastern (20E-35E) portion of the ITF was located at 12.1N, which is 1.5 degree south from the long-term mean position. Figure 1 displays the current position of the ITF relative to the long-term climatological position during the 3rd dekad of May and its previous position during the 1 dekad of May. Figures 2 and 3 are time series, illustrating the latitudinal values of the western and eastern portions of the ITF, respectively, and their seasonal evolutions since April, 2020.

Current vs. Normal Dekadal ITF Position
and RFE Accumulated Precipitation (mm)

June 2020, Dekad 1



Mean Western Portion of the ITF: Averaged 10W to 10E
As of: June 2020, Dekad 1



Mean Eastern Portion of the ITF: Averaged 20E to 35E
As of: June 2020, Dekad 1

