



CPC Africa Desk InterTropical (ITF) Front Analysis

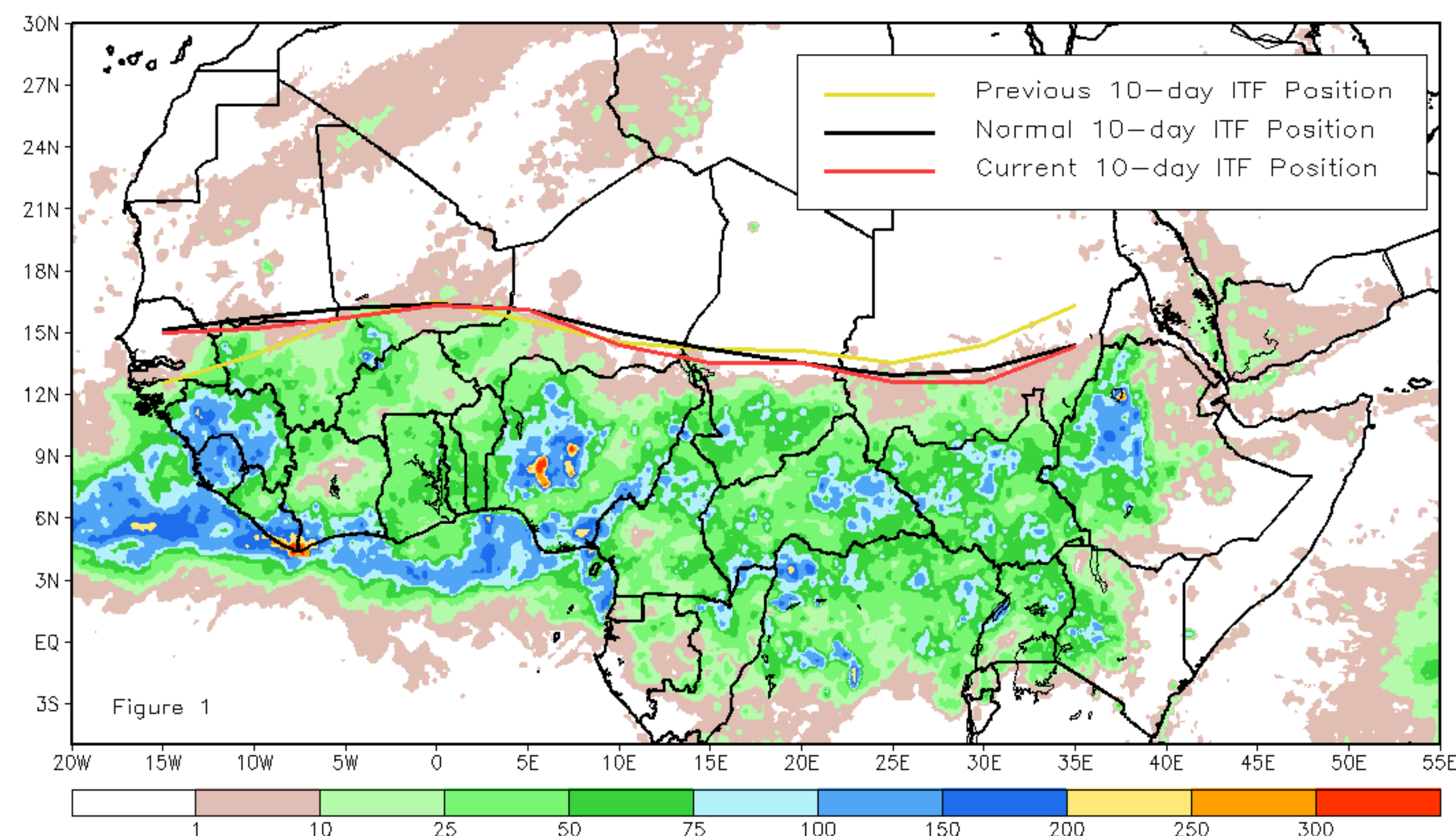
June 2018, Dekad 1

Discussion:

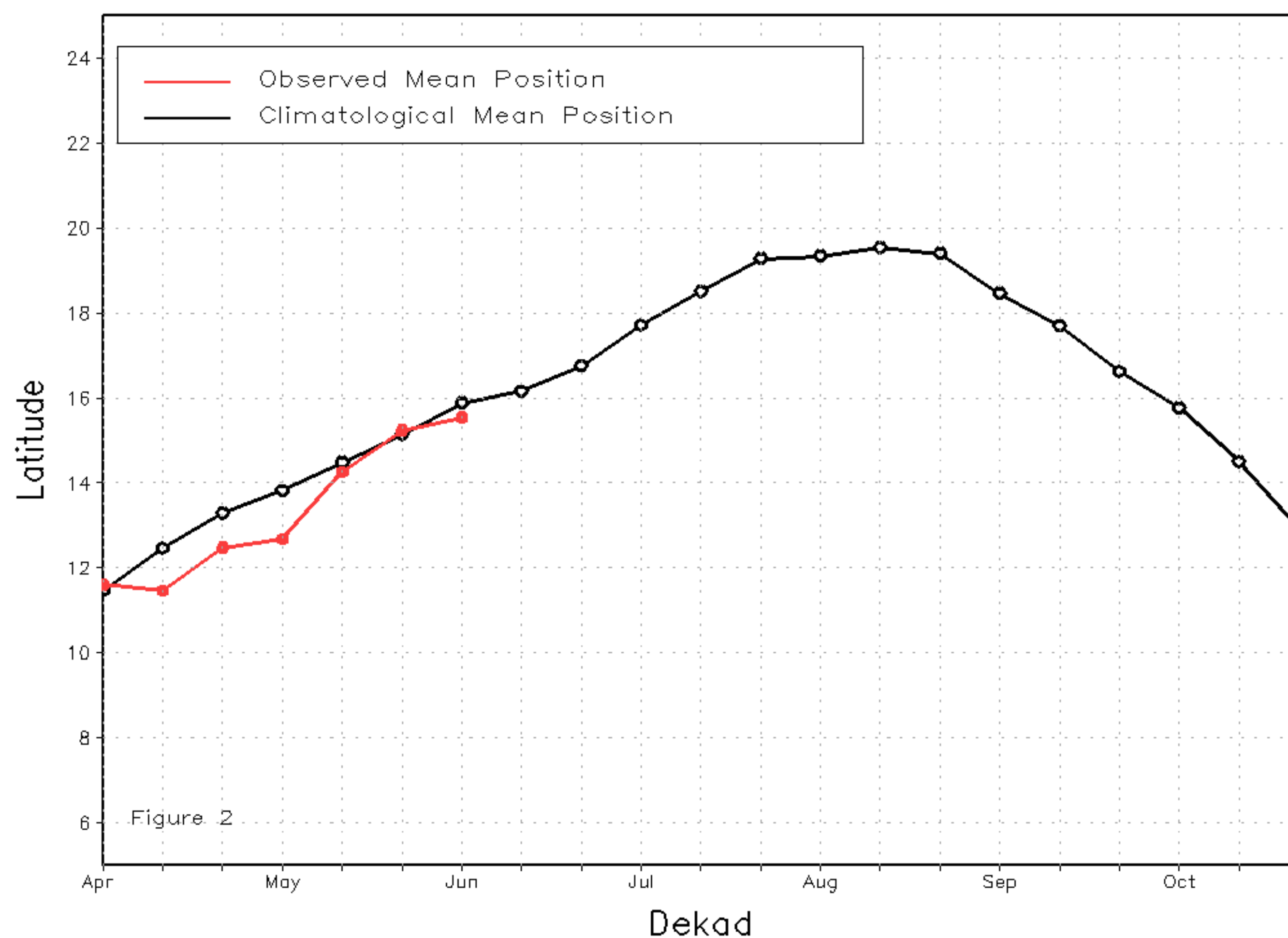
From June 1-10, the ITF continued its northward march across western and eastern Africa, and returned near its climatological normal position during early June over several areas. The mean western (10W-10E) portion of the ITF was approximated at 15.5N, falling slightly below the mean western position by 0.4 degree. Although below-average, the mean western position of the ITF experienced a significant northward movement over far western Africa compared to the previous dekad due to enhanced rainfall over Guinea, Senegal, and southern Mali. The mean eastern portion of the ITF approximated at 13.2N, also falling slightly below the climatological average (13.5N). Figure 1 shows the current position of the ITF relative to the mean climatological (black) position during the 1st dekad of June and its previous (yellow) position during the 3rd dekad of May. Figures 2 and 3 are time series, illustrating the mean latitudinal values of the western and eastern portion of the ITF, respectively, and their seasonal evolution compared to climatology since April, 2018.

Current vs. Normal Dekadal ITF Position
and RFE Accumulated Precipitation (mm)

June 2018, Dekad 1



Mean Western Portion of the ITF: Averaged 10W to 10E
As of: June 2018, Dekad 1



Mean Eastern Portion of the ITF: Averaged 20E to 35E
As of: June 2018, Dekad 1

