

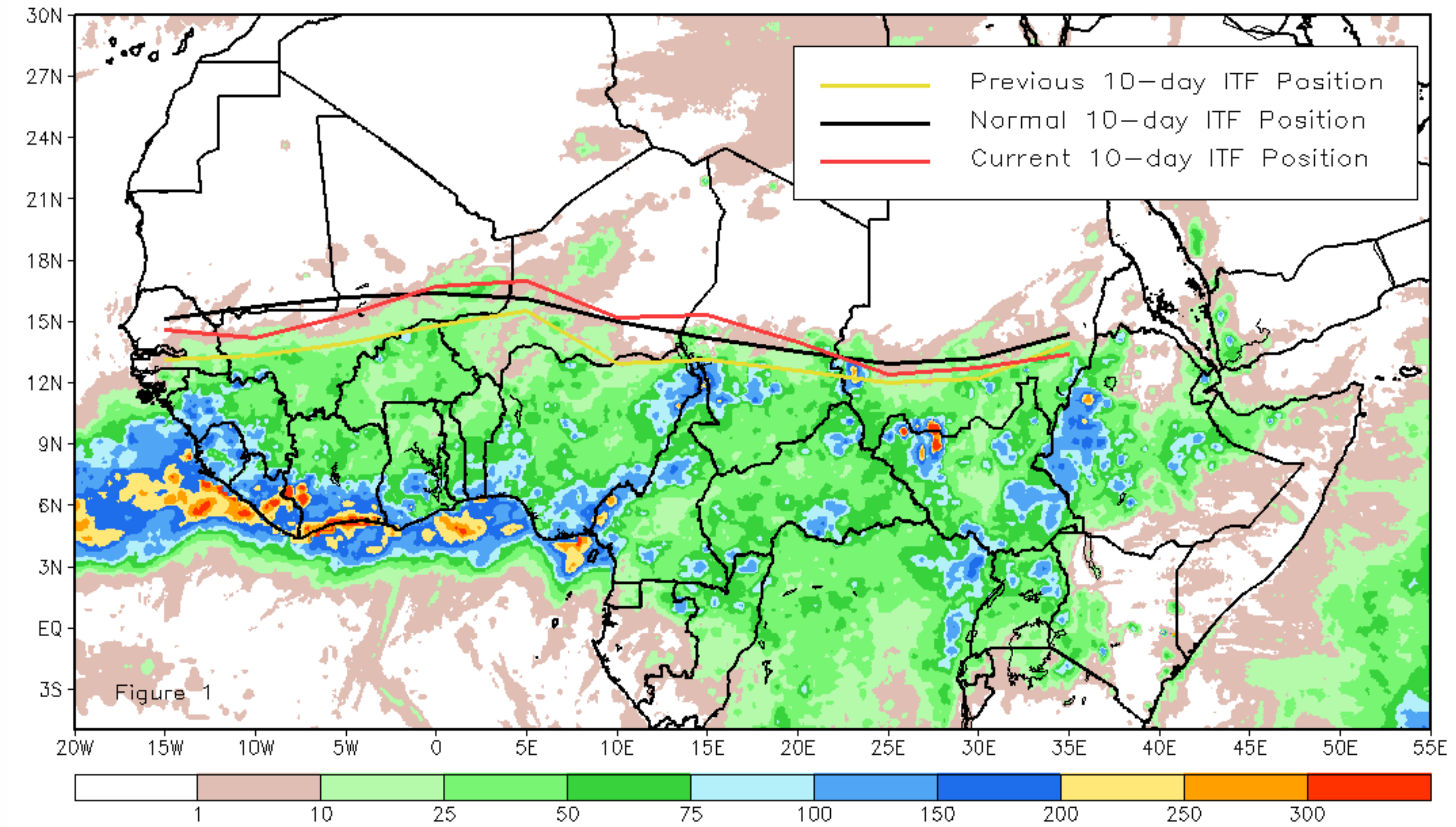


CPC Africa Desk InterTropical (ITF) Front Analysis June 2015, Dekad 1

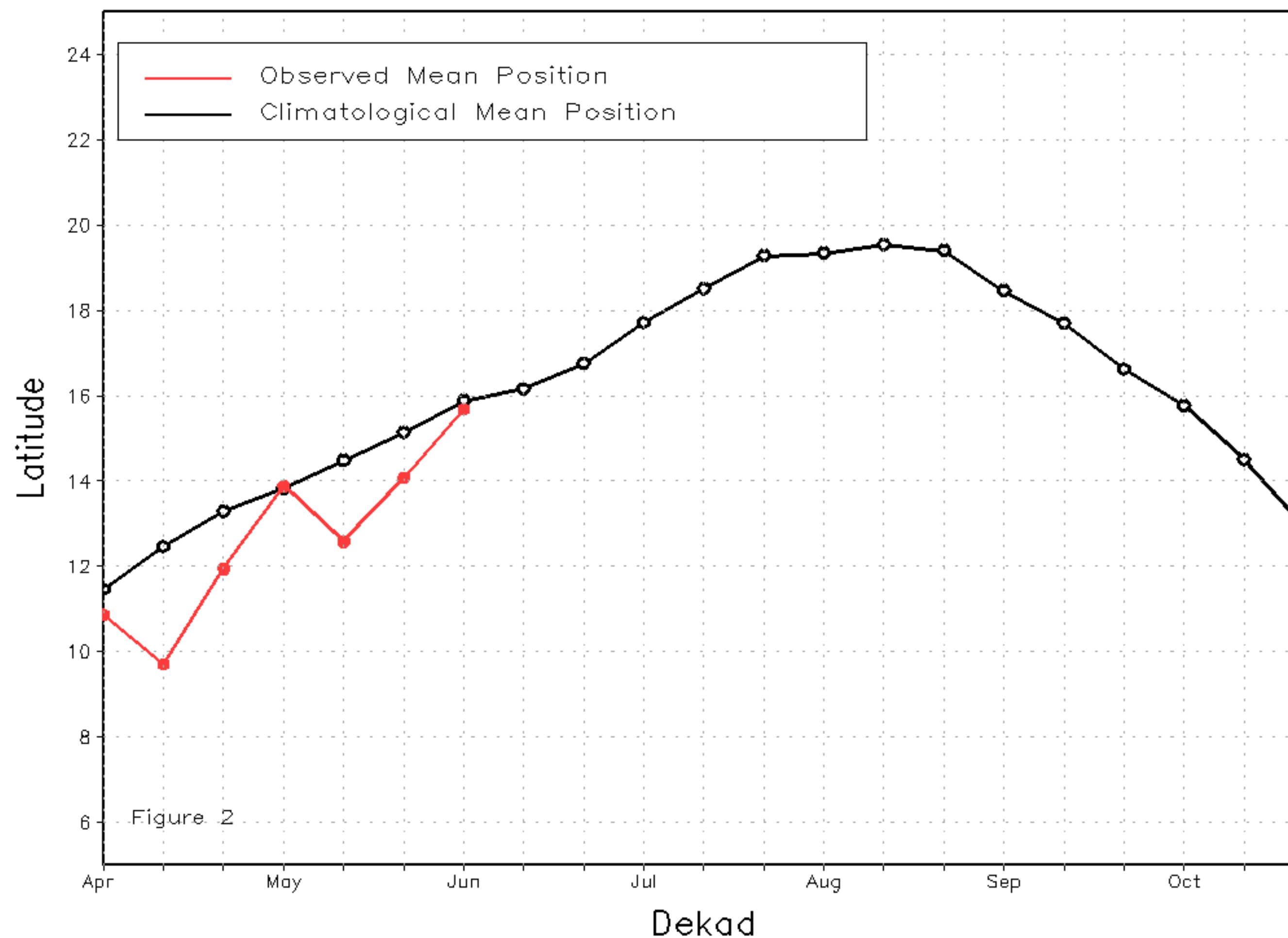
Discussion:

During the 1st dekad of June, the position of the ITF experienced moderate northward advancement in the west, and some slight advancement in the east compared to its previous position during end of May. The western averaged position (10W-10E) position of the ITF was approximated at 15.7 degrees North, which is now very near to the climatological normal position (15.9N) for the 1st dekad of June. The mean eastern averaged (20E-35E) position of the ITF was approximated at 13.1 degrees North, which is south of the climatological normal position (13.5) for early June. Figure 1 shows the current position of the ITF relative to its climatological position during the first dekad of June and its previous position during the third dekad of May. Figures 2 and 3 are time series, illustrating the mean latitudinal values of the western and eastern portion of the ITF, respectively, and their evolutions since April, 2015.

Current vs. Normal Dekadal ITF Position
and RFE Accumulated Precipitation (mm)
June 2015, Dekad 1



Mean Western Portion of the ITF: Averaged 10W to 10E
As of: June 2015, Dekad 1



Mean Eastern Portion of the ITF: Averaged 20E to 35E
As of: June 2015, Dekad 1

