



CPC Africa Desk InterTropical (ITF) Front Analysis

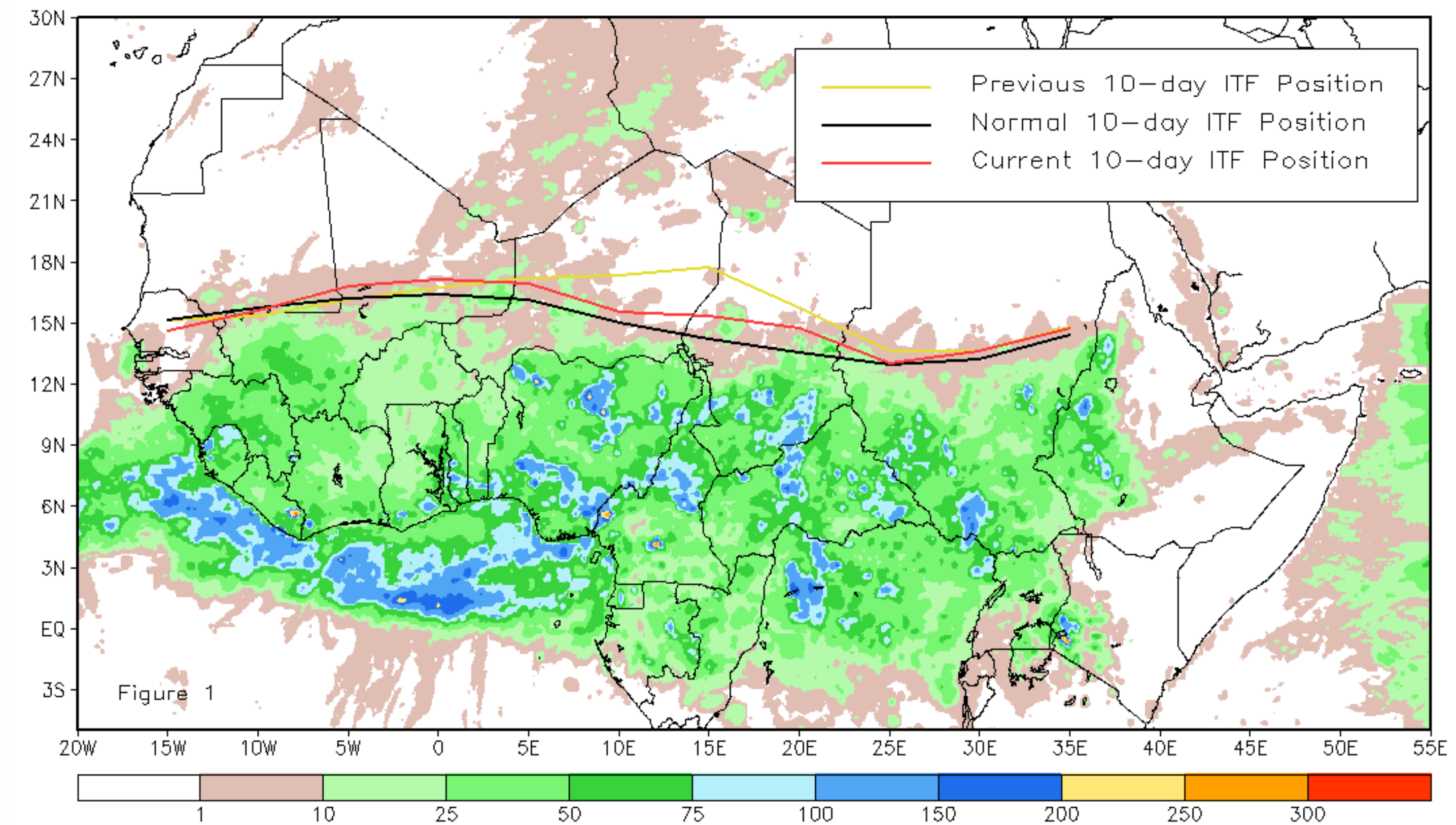
June 2012, Dekad 1

Discussion:

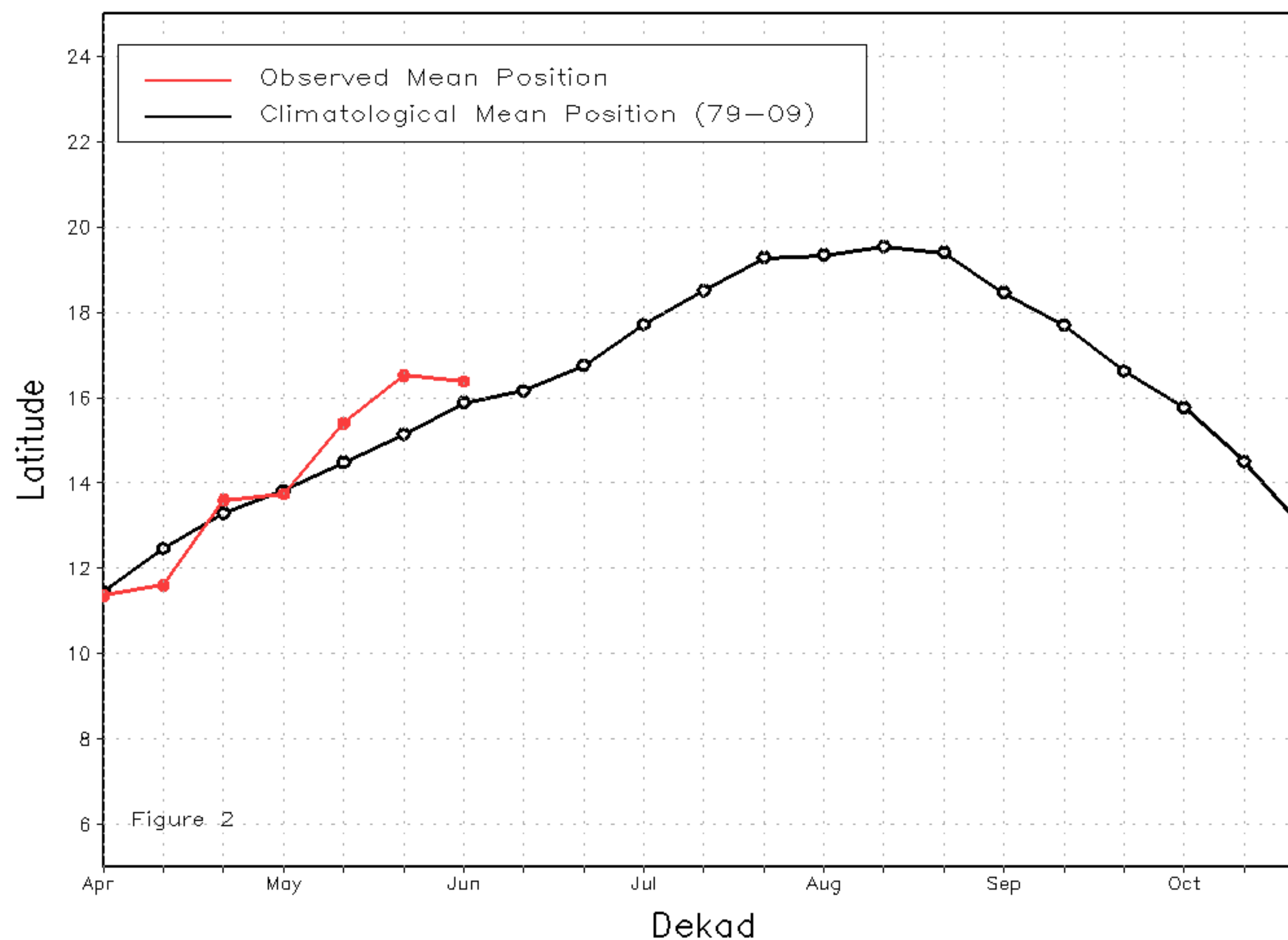
From June 1-10, 2012, the ITF remained slightly to the north of climatology across West Africa while retrograding southward in the east compared to the previous dekad. The mean western portion of the ITF was approximated at 16.4N, which was 0.5 degrees north of the climatological average position. The northward placement of the ITF was the result of above-average and moist southerly winds across West Africa. The mean eastern portion of the ITF was approximated at 14.0N, which was 0.5 degrees south of the ITF position during the third dekad of May but still 0.5 degrees north of the climatological average position. Southerly winds across east Africa were not nearly as anomalous as the previous dekad which led to a southerly placement of the ITF compared to the third dekad of May. However, the placement of the ITF remains slightly to the north of the climatological average position. Figure 1 shows the current ITF position relative to the positions of climatology for the first dekad of June, and its previous position during the third dekad of May. Figures 2 and 3 are time series illustrating the mean latitudinal values of the western and eastern portions of the ITF, respectively, and their observed progressions since April, 2012.

Current vs. Normal Dekadal ITF Position
and RFE Accumulated Precipitation (mm)

June 2012, Dekad 1



Mean Western Portion of the ITF: Averaged 10W to 10E
As of: June 2012, Dekad 1



Mean Eastern Portion of the ITF: Averaged 20E to 35E
As of: June 2012, Dekad 1

