

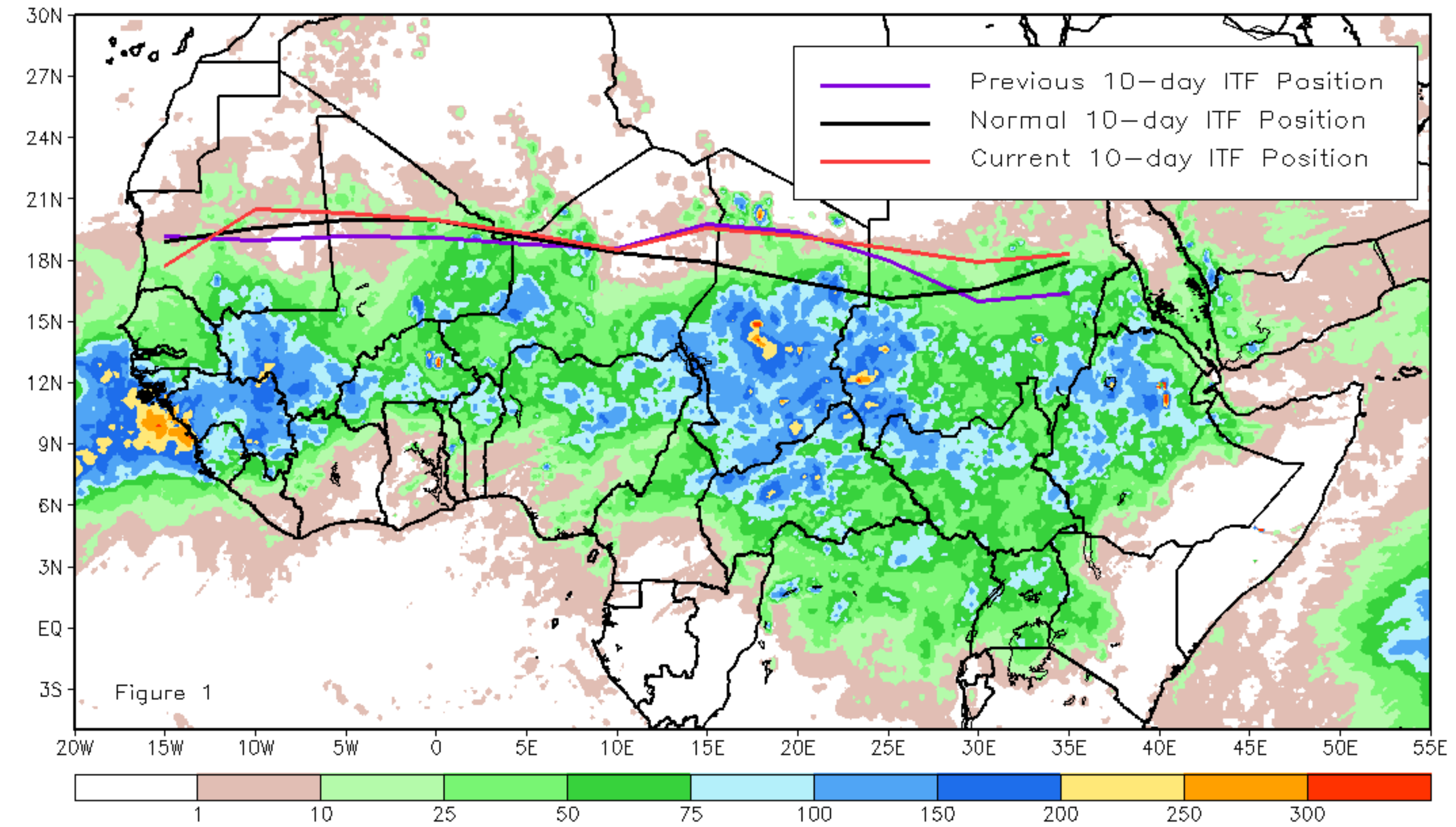


CPC Africa Desk InterTropical (ITF) Front Analysis July 2024, Dekad 3

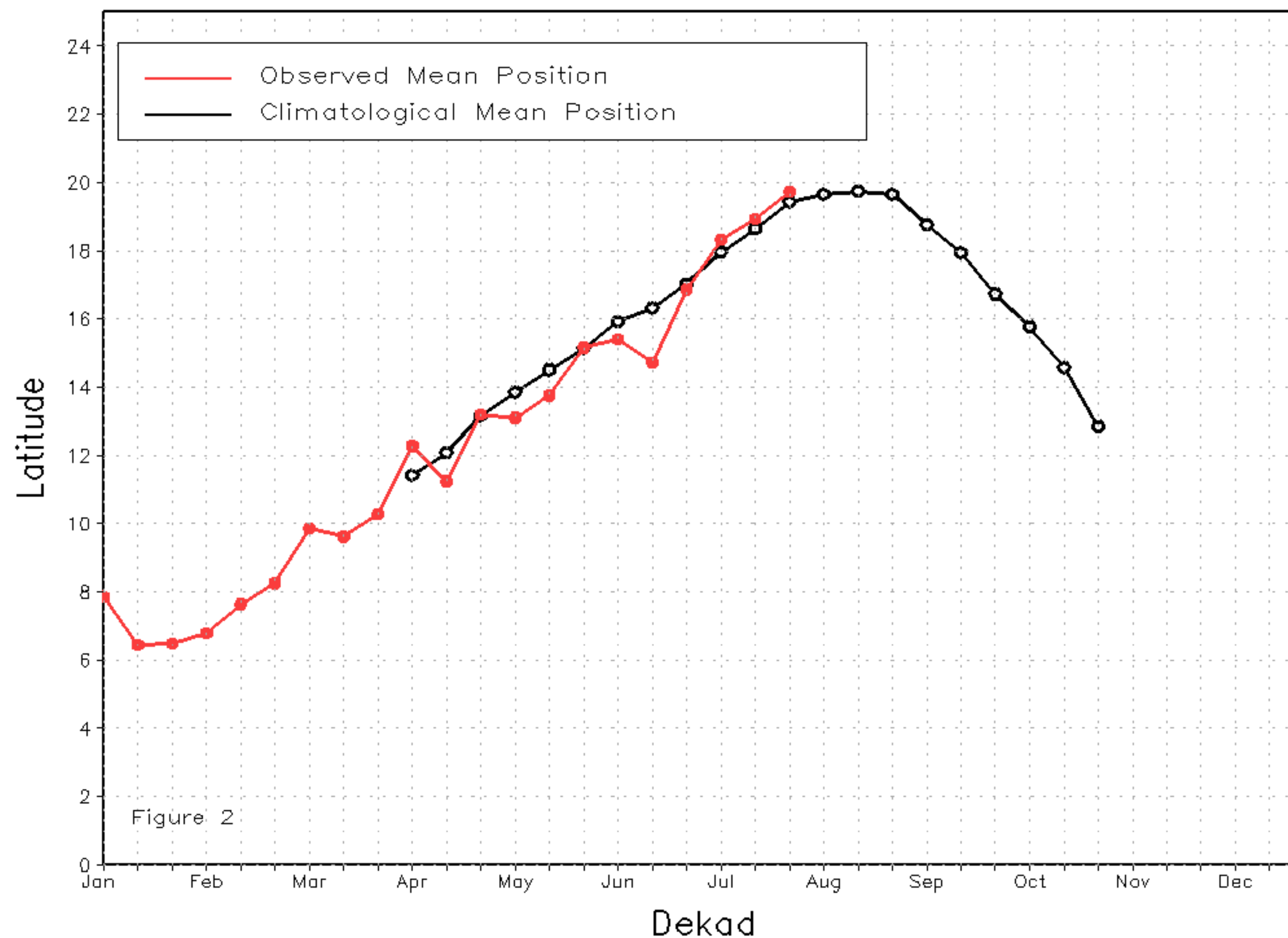
Discussion:

From July 21-31, the Inter-Tropical Front (ITF) moved northward along most of its length, except in southwestern Mauritania and northern Chad, where it moved southward compared to its previous position. The western (10W-10E) portion of the ITF was located approximately at 19.7N, which was above the climatological position by 0.3 degrees. Also, at the eastern (20E-35E) portion, the ITF was approximated at 18.5N, which was above the long-term average position by 1.6 degrees. Figure 1 displays the current position of the ITF relative to the climatological position during the 3rd dekad of July and its previous position during the 2nd dekad of July. Figures 2 and 3 are time series, illustrating the latitudinal positions for the western and eastern portions of the ITF, respectively, and their seasonal evolutions since the beginning of April 2024.

Current vs. Normal Dekadal ITF Position
and RFE Accumulated Precipitation (mm)
July 2024, Dekad 3



Mean Western Portion of the ITF: Averaged 10W to 10E
As of: July 2024, Dekad 3



Mean Eastern Portion of the ITF: Averaged 20E to 35E
As of: July 2024, Dekad 3

