



CPC Africa Desk InterTropical (ITF) Front Analysis

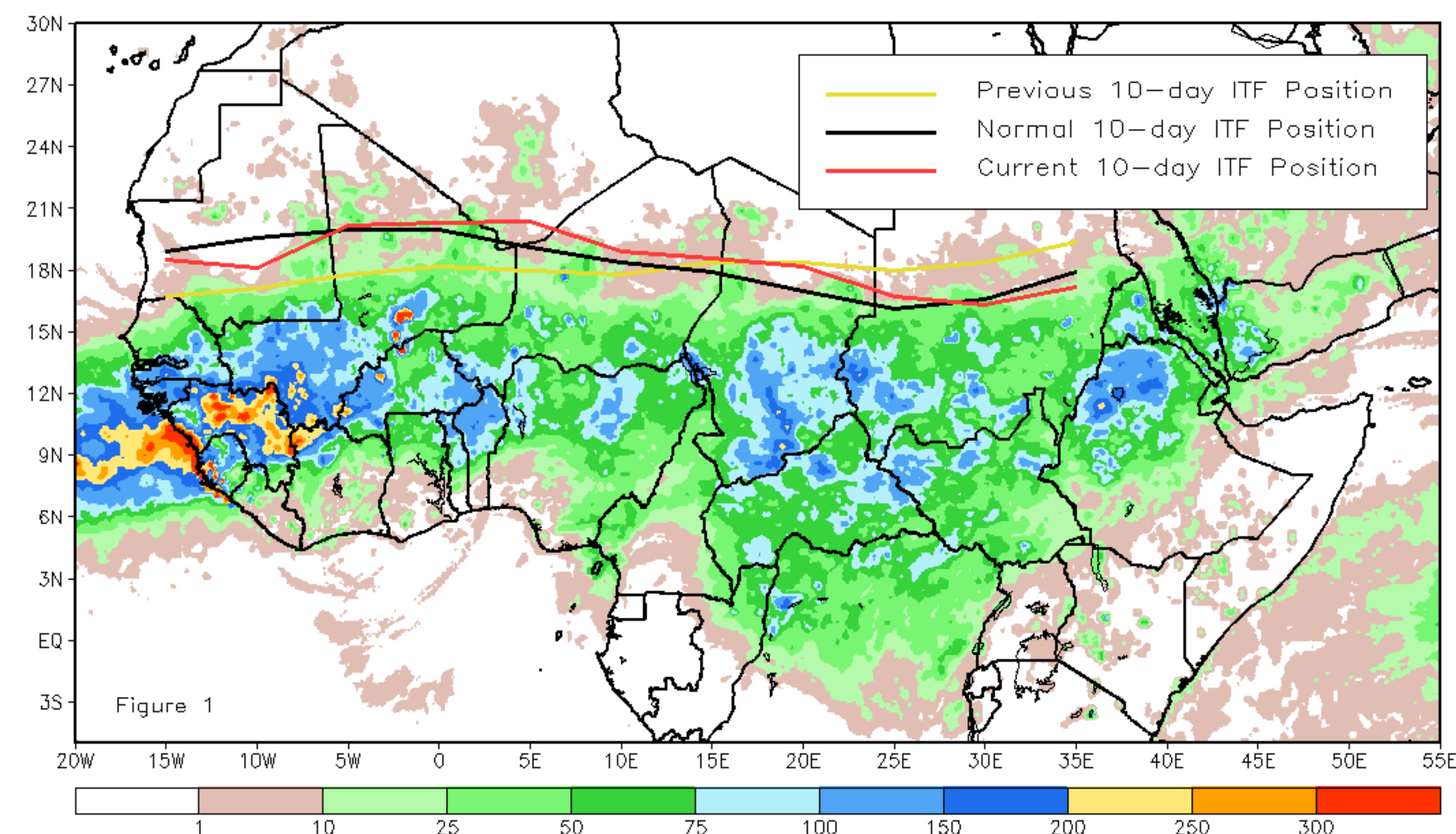
July 2021, Dekad 3

Discussion:

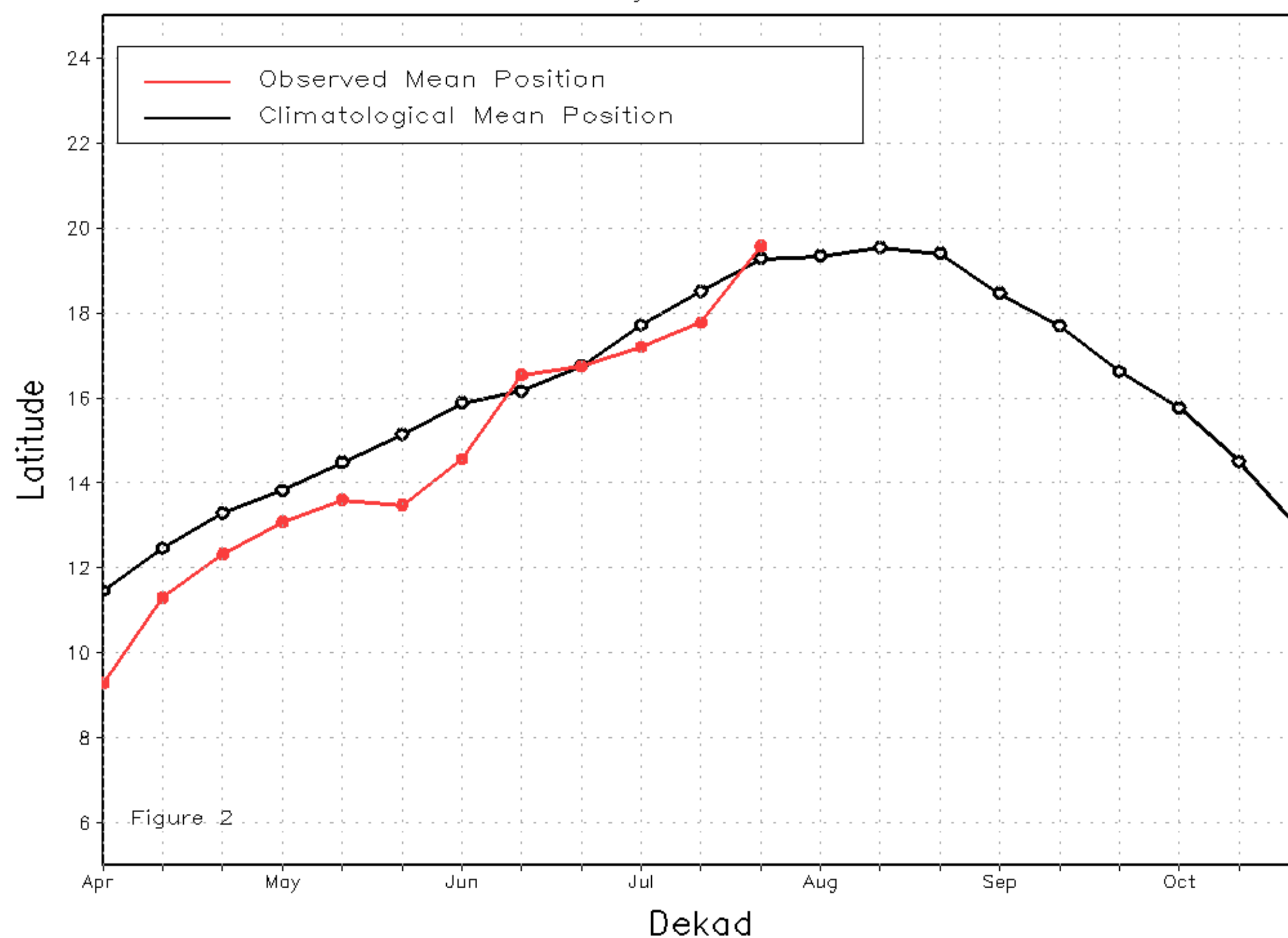
From 21-31 July, the ITF propagated farther north relative to its position during the previous period. From 10W-10E, the mean western portion of the ITF was located at 19.6N, which was to the north of the mean position by 0.2 degree. From 20E-35E, the mean eastern portion of the ITF was approximated at 17.1N, leading the climatological position by 0.2 degree. The abnormal northerly position of the ITF might have contributed to the wetness over many areas of West Africa and eastern Africa during the period. Figure 1 displays the current position of the ITF relative to the long-term average position during the 3rd dekad of July and its previous position during the 2nd dekad of July. Figures 2 and 3 are time series, illustrating the latitudinal values of the western and eastern portions of the ITF, respectively, and their seasonal evolutions since the beginning of April, 2021.

Current vs. Normal Dekadal ITF Position
and RFE Accumulated Precipitation (mm)

July 2021, Dekad 3



Mean Western Portion of the ITF: Averaged 10W to 10E
As of: July 2021, Dekad 3



Mean Eastern Portion of the ITF: Averaged 20E to 35E
As of: July 2021, Dekad 3

