



CPC Africa Desk InterTropical (ITF) Front Analysis

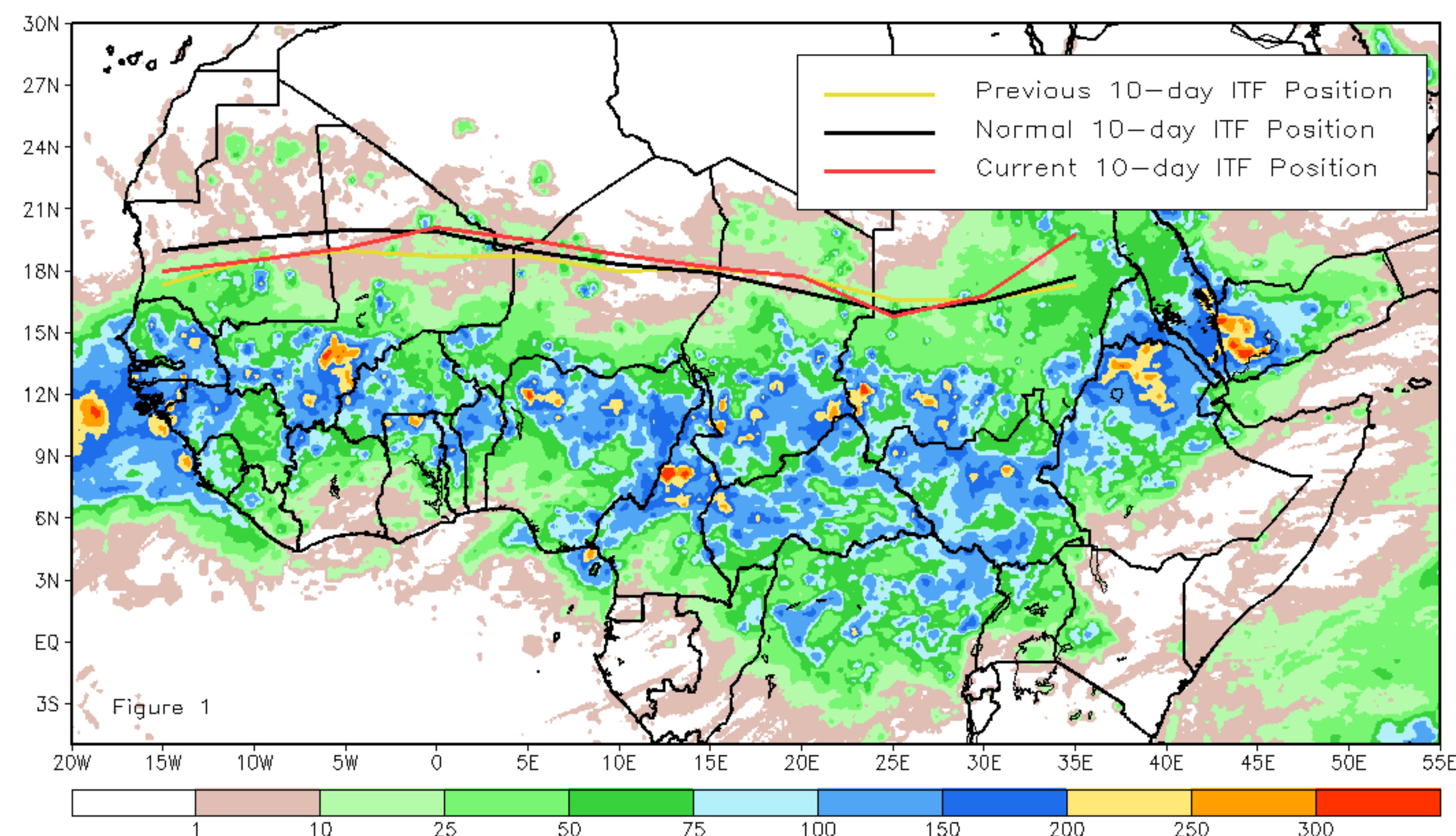
July 2020, Dekad 3

Discussion:

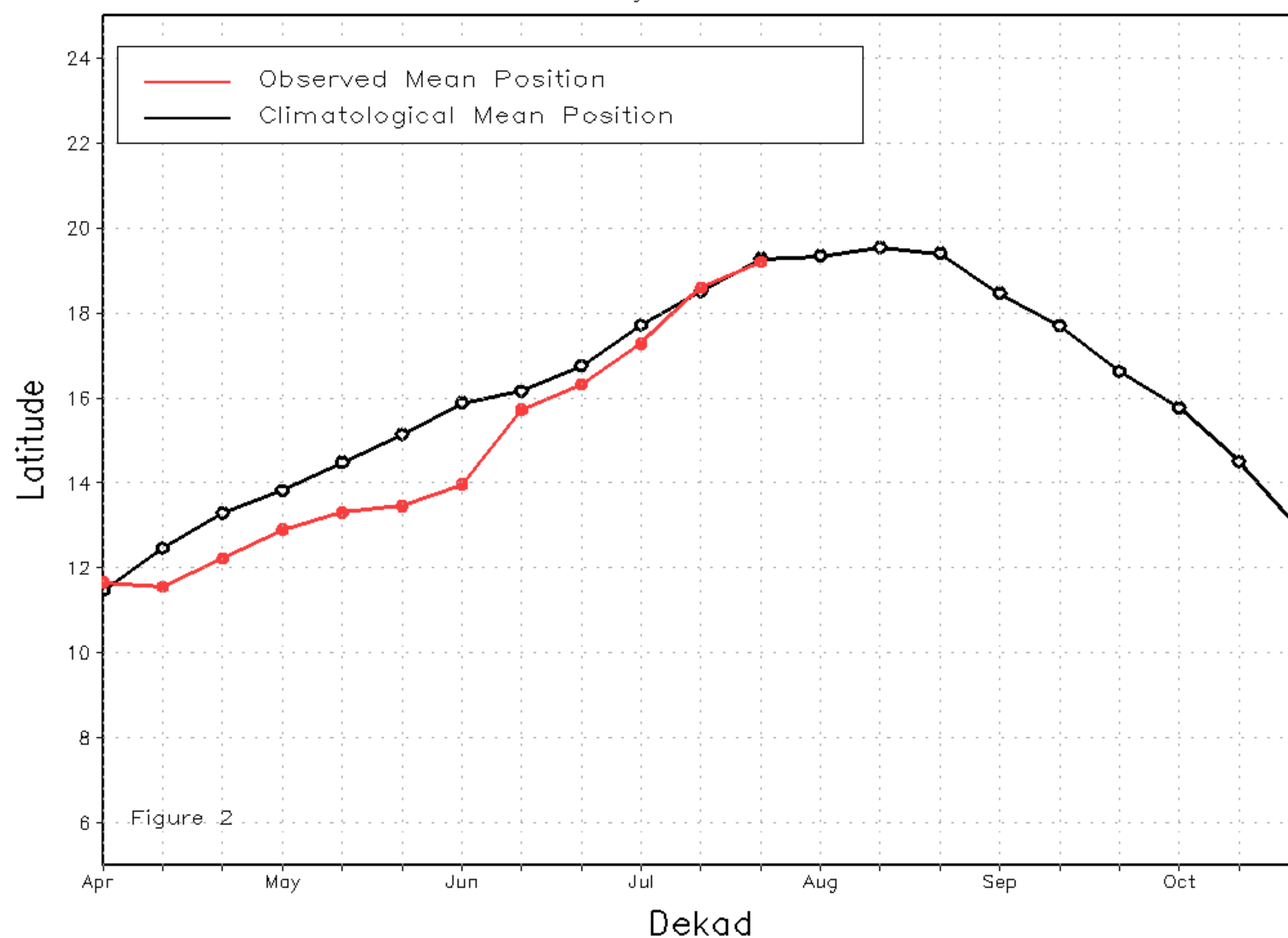
From July 21-31, the ITF remained nearly stationary relative to its previous position and was close to the long-term climatological position during this time of the year. From 10W to 10E, the mean position of the ITF was approximated at 19.2N, which was slightly to the south of the mean position at 19.4N and was close to last year position at 19.1N. Nevertheless, this anomalously south position brought favorable moisture over many parts of the Sahel. From 20E to 35E, the mean position of the ITF was located at 17.5N, which was to the north of the mean position at 16.8N and also was north of last year position at 16N. This anomalously north position resulted in widespread above-average rainfall over much of Sudan. Figure 1 shows the current position of the ITF relative to the long-term average position during the 3rd dekad of July and its previous position during the 2nd dekad of the month. Figures 2 and 3 are time series, illustrating the latitudinal values of the western and eastern portions of the ITF, respectively, and their seasonal evolutions since April, 2020.

Current vs. Normal Dekadal ITF Position
and RFE Accumulated Precipitation (mm)

July 2020, Dekad 3



Mean Western Portion of the ITF: Averaged 10W to 10E
As of: July 2020, Dekad 3



Mean Eastern Portion of the ITF: Averaged 20E to 35E
As of: July 2020, Dekad 3

