



# CPC Africa Desk InterTropical (ITF) Front Analysis

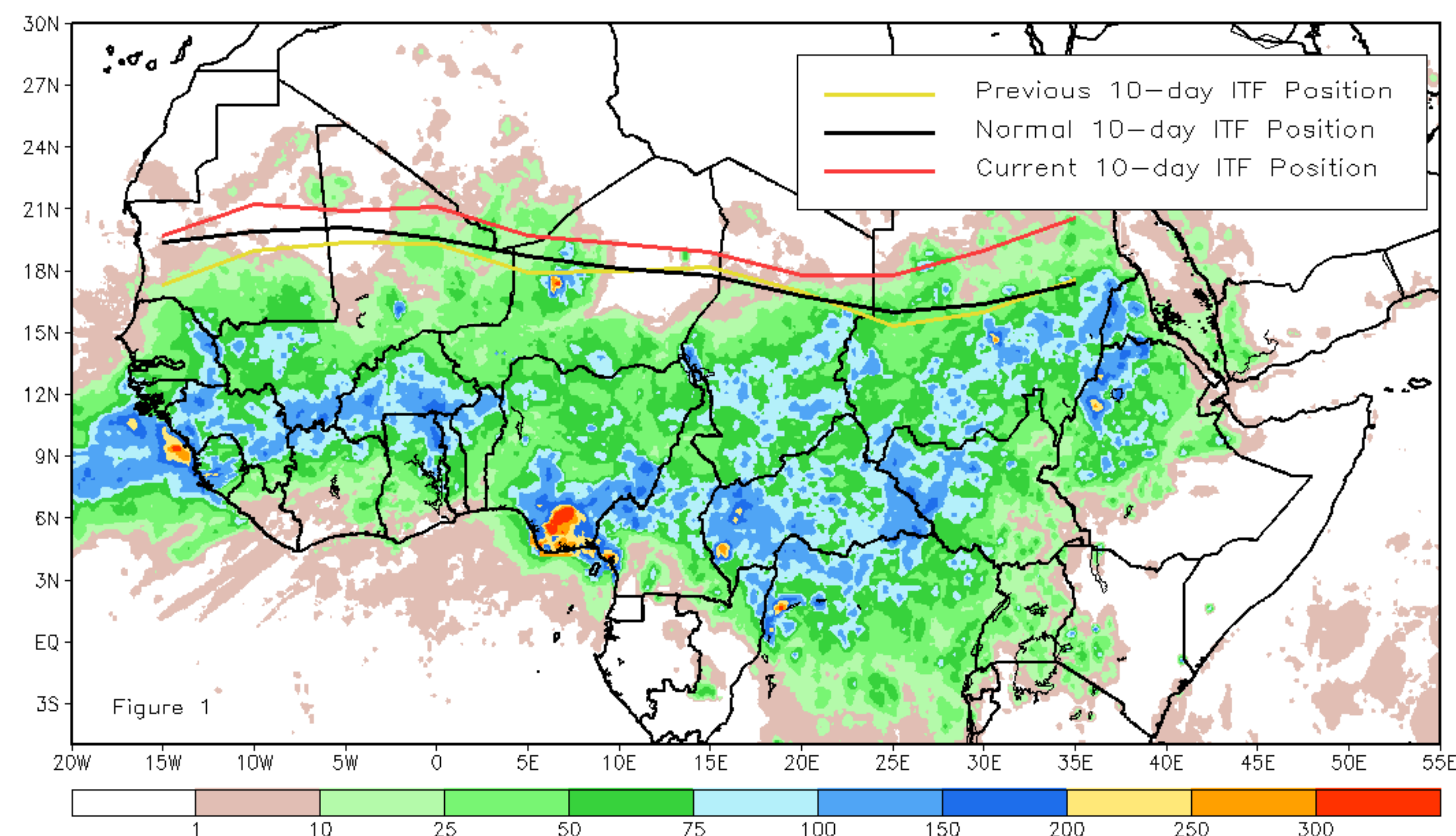
## July 2018, Dekad 3

### Discussion:

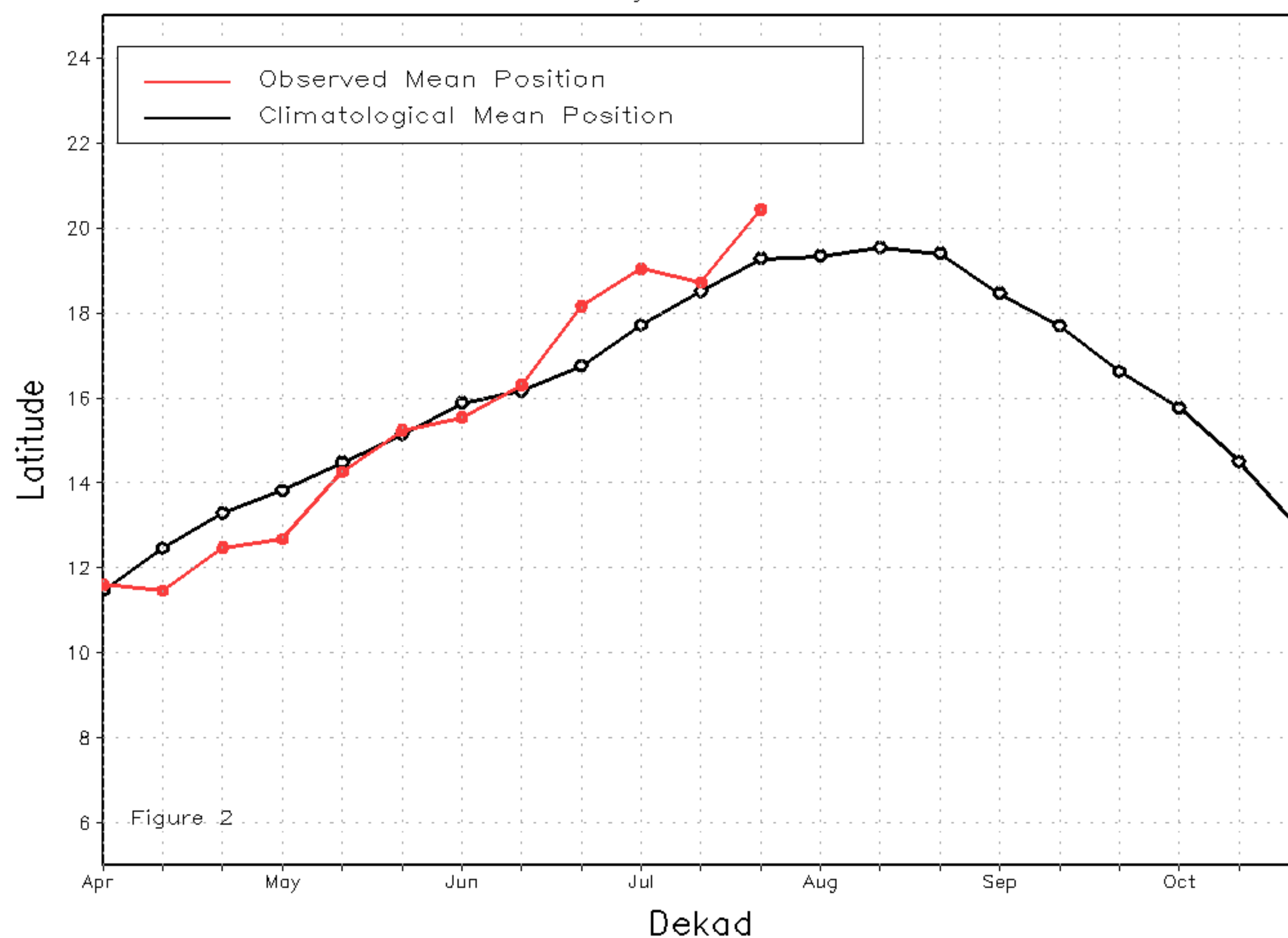
From July 21-31, the ITF exhibited significant northward movement from its previous position during mid-July along its entire length. The mean western (10W-10E) portion of the ITF was approximated at 20.4N, located well to the north of the climatological normal position by 1.1 degrees. The persistent northward displacement of the ITF during recent dekads has led to ample moisture across the Sahel and moisture pushing well into the Sahara this week. The mean eastern (20E - 35E) portion of the ITF was approximated at 18.8N, far north of the previous dekad climatological mean position by 2.2 degrees. The abnormal placement of the ITF has led to heavy rains and flooding in Sudan. Figure 1 shows the current position of the ITF relative to the mean climatological (black) position during the 3rd dekad of July and its previous (yellow) position during the 2nd dekad of July. Figures 2 and 3 are time series, illustrating the mean latitudinal values of the western and eastern portion of the ITF, respectively, and their seasonal evolution compared to climatology since April, 2018.

Current vs. Normal Dekadal ITF Position  
and RFE Accumulated Precipitation (mm)

July 2018, Dekad 3



Mean Western Portion of the ITF: Averaged 10W to 10E  
As of: July 2018, Dekad 3



Mean Eastern Portion of the ITF: Averaged 20E to 35E  
As of: July 2018, Dekad 3

