



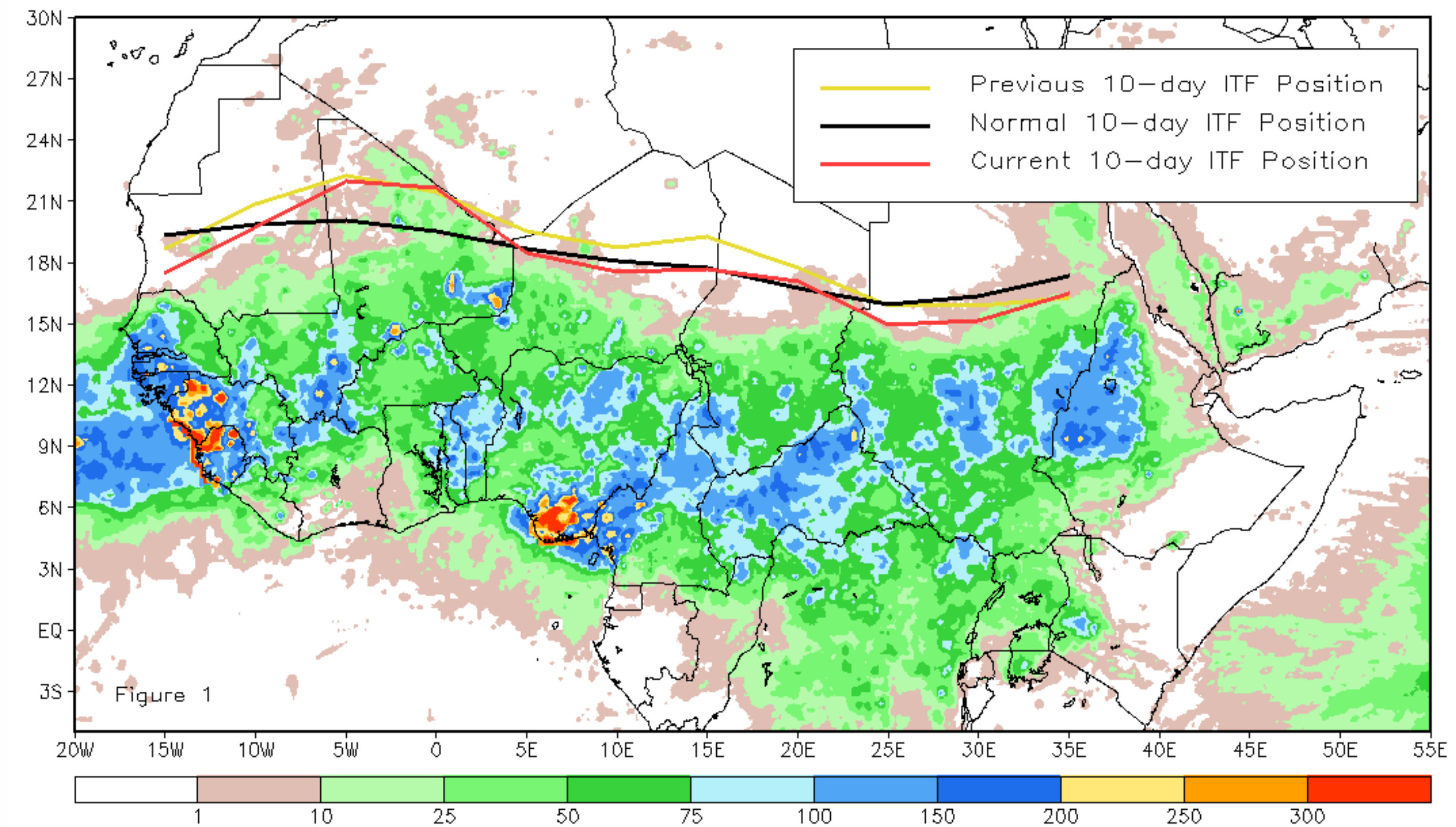
CPC Africa Desk InterTropical (ITF) Front Analysis

July 2017, Dekad 3

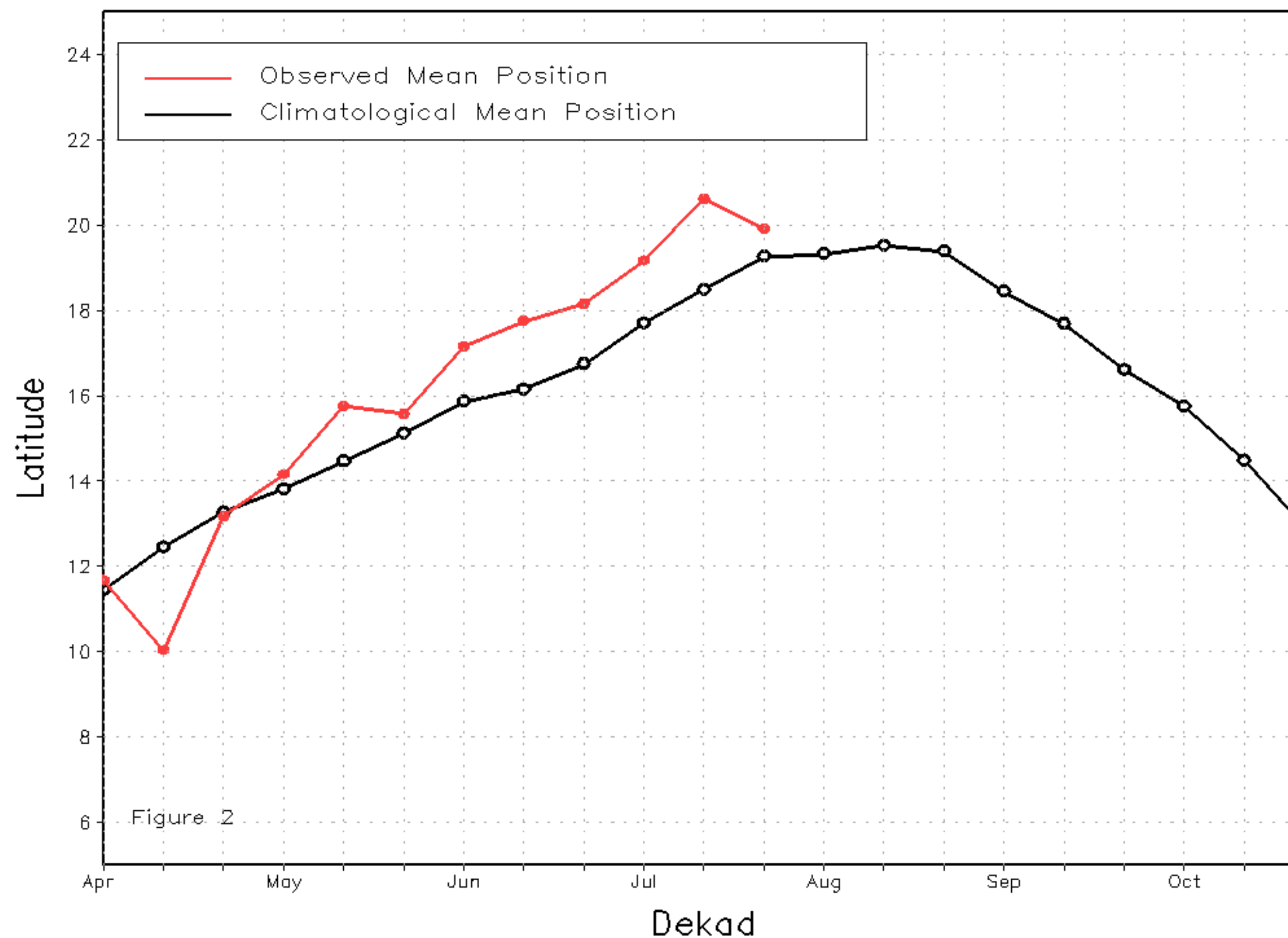
Discussion:

From July 21-31, the ITF experienced a slight retreat to the south relative to its previous position but overall remained near the long-term average position along its entire axis. While the mean western (10W-10E) portion of the ITF was located near 19.9N and was anomalously north of the climatological position by 0.6 degree, its mean eastern (20E-35E) counterpart was approximated at 16N, which was anomalously south of the average position by 0.6 degree. Figure 1 shows the current position of the ITF relative to its climatological position during the 3rd dekad of July and its previous position during the 2nd dekad of July. Figures 2 and 3 are time series, displaying the mean latitudinal values of the western and eastern portion of the ITF, respectively, and their evolutions since April, 2017.

Current vs. Normal Dekadal ITF Position
and RFE Accumulated Precipitation (mm)
July 2017, Dekad 3



Mean Western Portion of the ITF: Averaged 10W to 10E
As of: July 2017, Dekad 3



Mean Eastern Portion of the ITF: Averaged 20E to 35E
As of: July 2017, Dekad 3

