



CPC Africa Desk InterTropical (ITF) Front Analysis

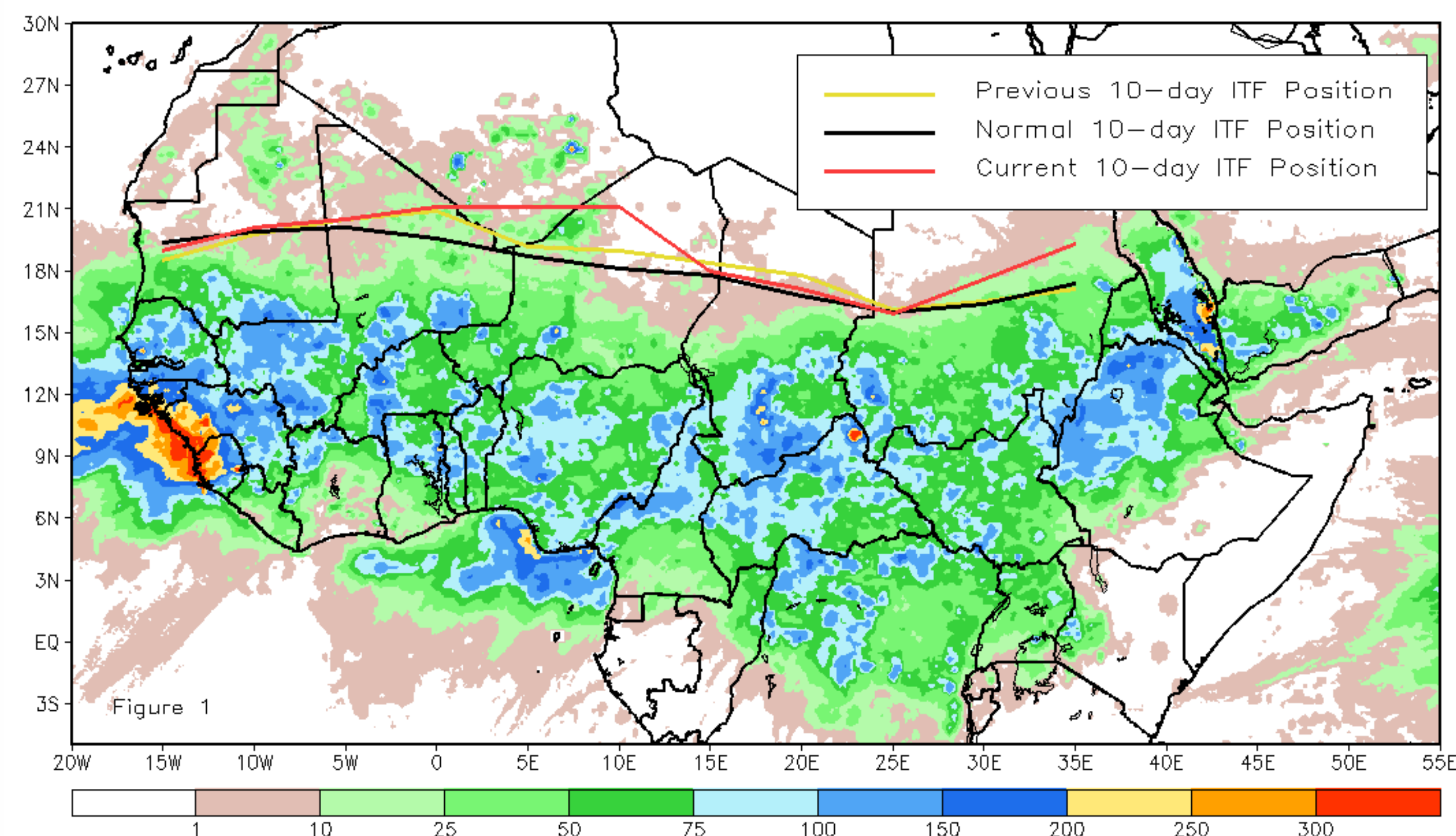
July 2016, Dekad 3

Discussion:

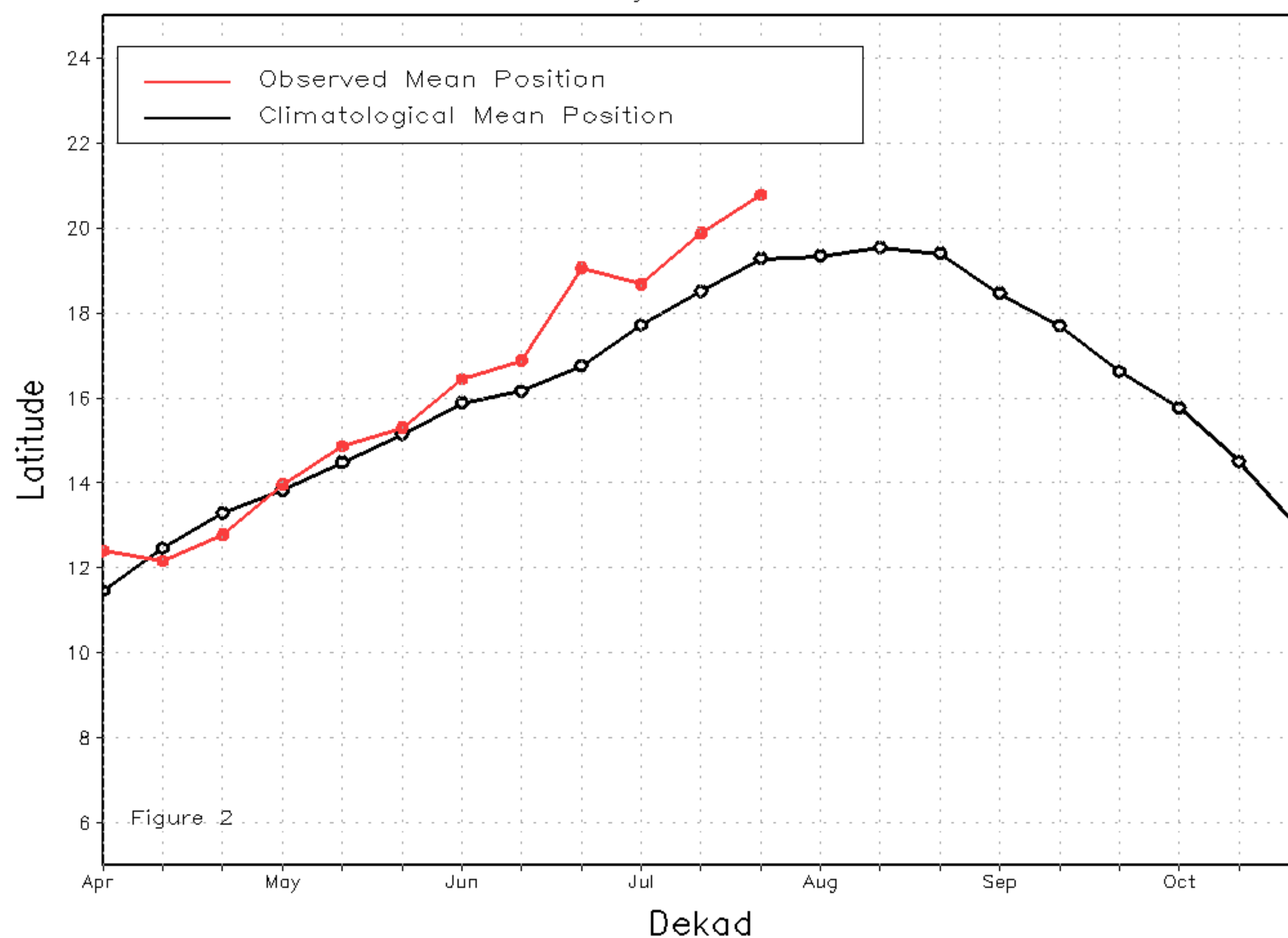
From July 21-31, the Inter-Tropical Front (ITF) maintained its northward progression across Africa. From 10W-10E, the ITF moved farther north relative to its previous position and the long-term average. The ITF mean western portion was located at 20.8N, which was to the north of the climatology by 1.5 degrees. From 20E-35E, the ITF also advanced poleward, with a positive anomalous position of 0.9 degree. The anomalous northerly position of the ITF over both the western and eastern portions was associated with widespread and abundant rain throughout much of West Africa and the Greater Horn of Africa sub regions. Figure 1 shows the current position of the ITF relative to its climatological position during the 3rd dekad of July and its previous location during the 2nd dekad of July. Figures 2 and 3 are time series, indicating the mean latitudinal values of the western and eastern portion of the ITF, respectively, and their evolutions since April, 2016.

Current vs. Normal Dekadal ITF Position
and RFE Accumulated Precipitation (mm)

July 2016, Dekad 3



Mean Western Portion of the ITF: Averaged 10W to 10E
As of: July 2016, Dekad 3



Mean Eastern Portion of the ITF: Averaged 20E to 35E
As of: July 2016, Dekad 3

