



# CPC Africa Desk InterTropical (ITF) Front Analysis

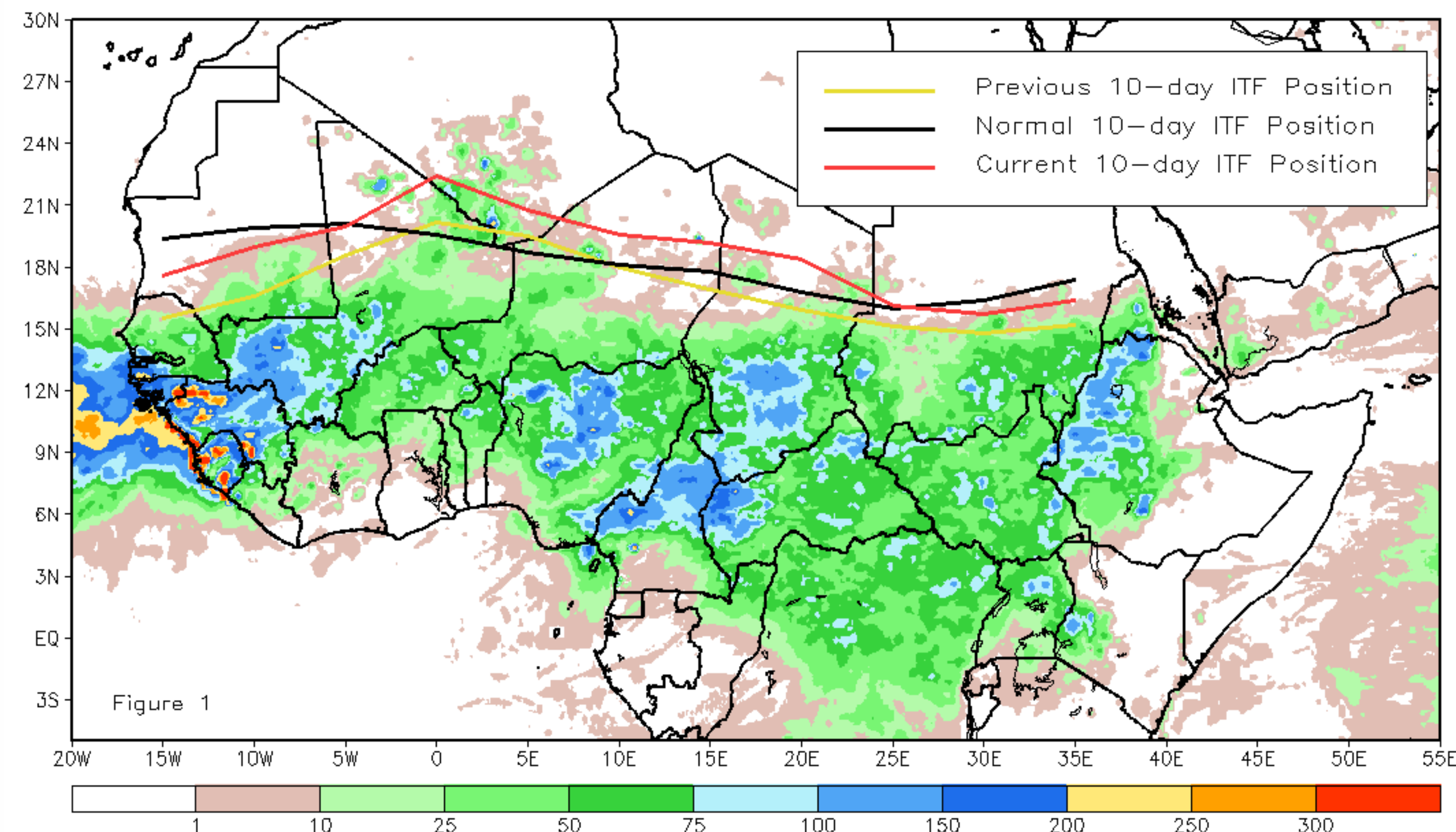
## July 2015, Dekad 3

### Discussion:

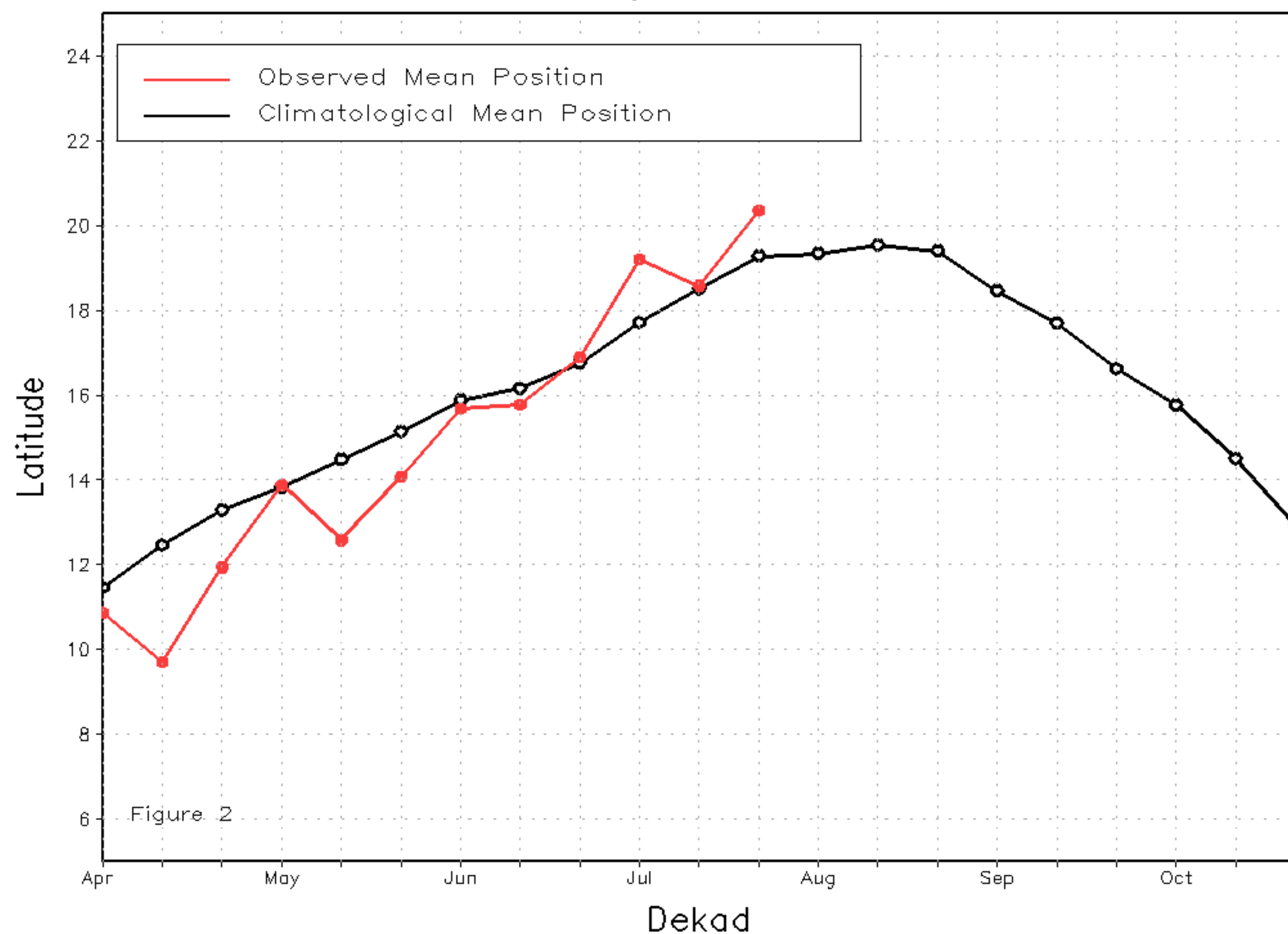
During the last dekad of July, the ITF experienced much advancement compared to its previous position during the middle of July. The mean western portion (10W-10E) was approximated at 20.4 degrees North, which remained over 1 degree above the climatological mean position for late July. The anomalous ITF position in the west was associated with a broad lower-level southerly wind anomaly, advecting ample moisture into parts of northern Mali and southern Algeria. The mean eastern portion (20E-35E) of the ITF was approximated at 16.6 degrees North, on par with its climatological mean position. Figure 1 displays the current position of the ITF relative to its climatological position during the second dekad of July and its former position during the 1st dekad of July. Figures 2 and 3 are time series, illustrating the mean latitudinal values of the western and eastern portion of the ITF, respectively, and their evolutions since April, 2015.

Current vs. Normal Dekadal ITF Position  
and RFE Accumulated Precipitation (mm)

July 2015, Dekad 3



Mean Western Portion of the ITF: Averaged 10W to 10E  
As of: July 2015, Dekad 3



Mean Eastern Portion of the ITF: Averaged 20E to 35E  
As of: July 2015, Dekad 3

