



CPC Africa Desk InterTropical (ITF) Front Analysis

July 2014, Dekad 3

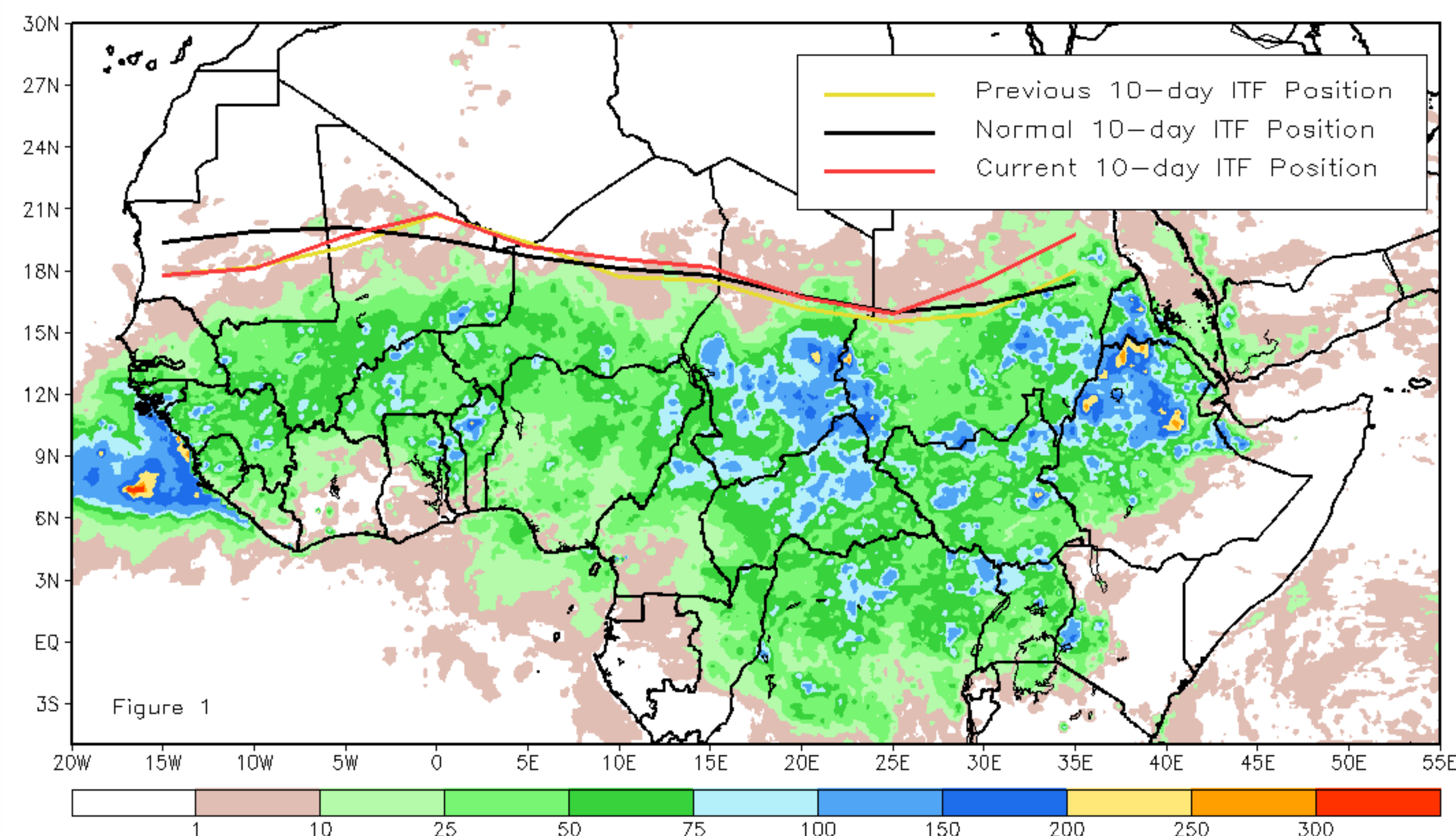
Discussion:

During the third dekad in July, the ITF continued its northward migration across the Africa Sahel. In the west (10W to 10E), the average ITF position matched its climatological mean position (19.3N), however there was a noted lag in far west (15W to 5W) over parts of Senegal, Mauritania, and Mali. The delayed advancement of the ITF in these areas have been associated with below-average rainfall and anomalously drier, northerly flow in the region. The mean eastern position of the ITF (20E to 35E) was approximated at 17.5N, which led the climatological position by nearly 1 degree (16.6N) in late July. Much of the anomalous ITF placement resided over parts of eastern Sudan, where torrentially heavy rains and deep lower-level surges of moisture were observed.

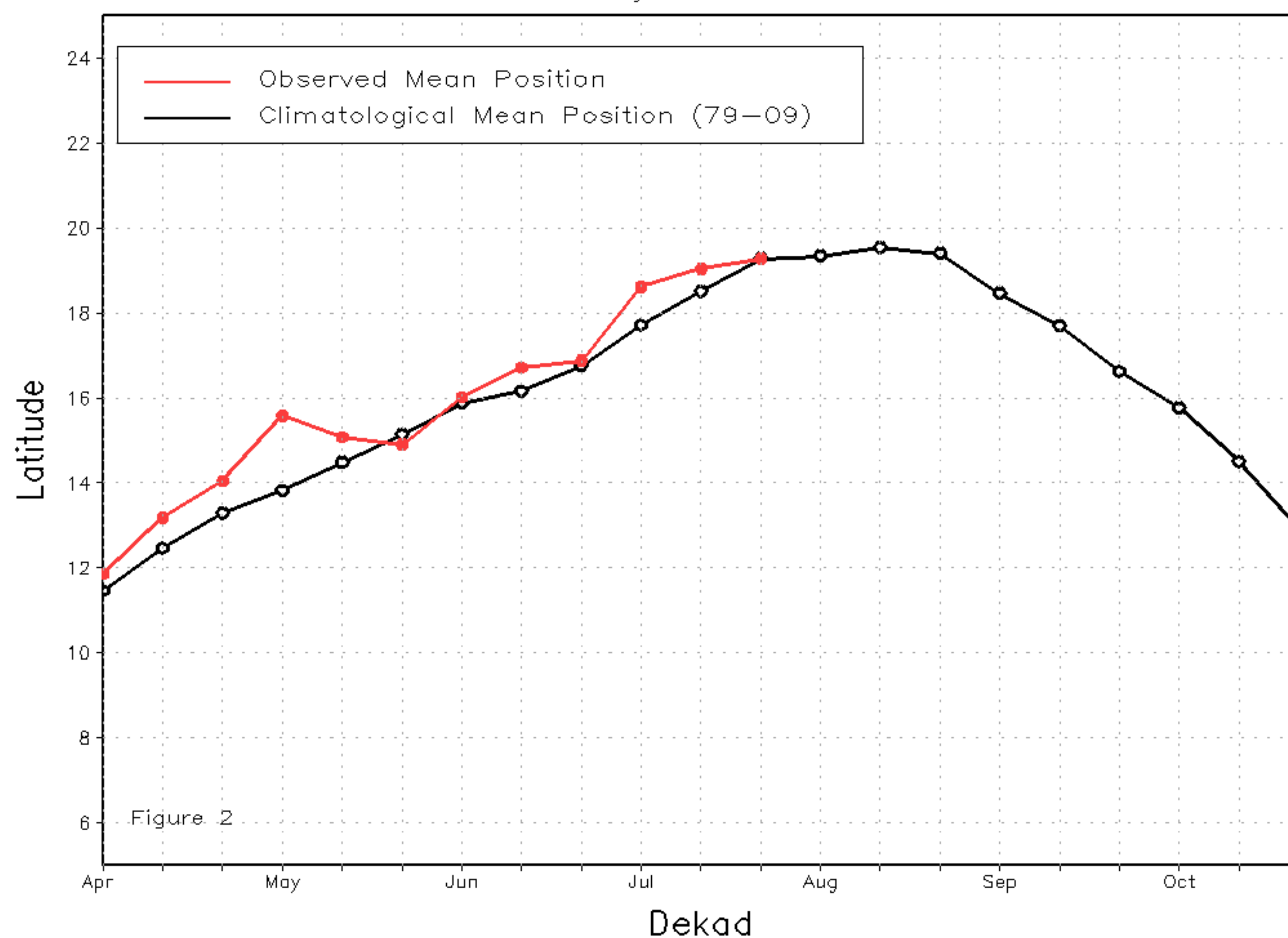
Figure 1 shows the current ITF position relative to its long-term average position during the 3rd dekad of July and its previous position during the 2nd dekad of July. Figures 2 and 3 are time series, illustrating the mean latitudinal values of the western and eastern portion of the ITF, respectively, and their evolutions since April, 2014.

Current vs. Normal Dekadal ITF Position
and RFE Accumulated Precipitation (mm)

July 2014, Dekad 3



Mean Western Portion of the ITF: Averaged 10W to 10E
As of: July 2014, Dekad 3



Mean Eastern Portion of the ITF: Averaged 20E to 35E
As of: July 2014, Dekad 3

