



CPC Africa Desk InterTropical (ITF) Front Analysis

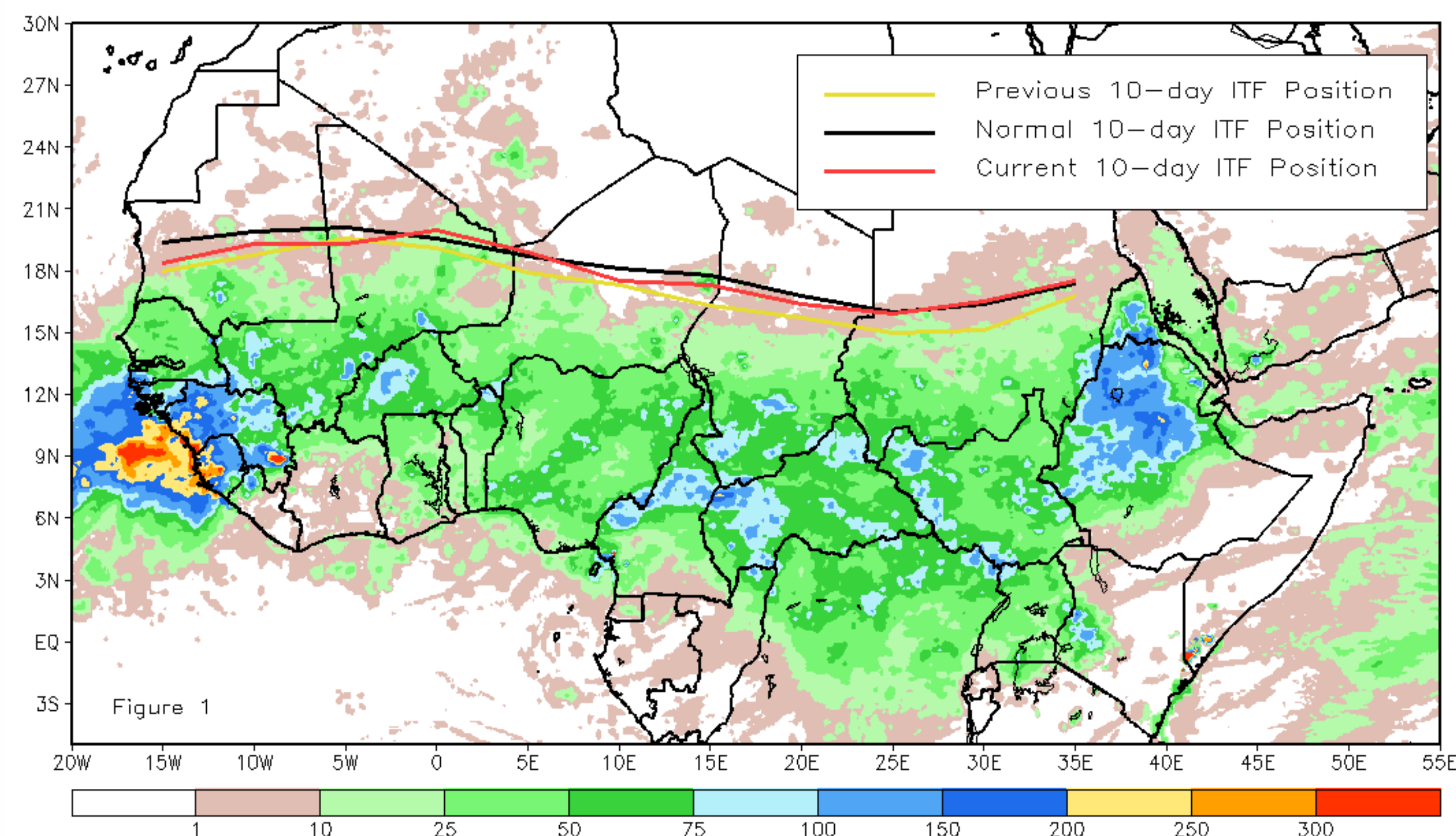
July 2013, Dekad 3

Discussion:

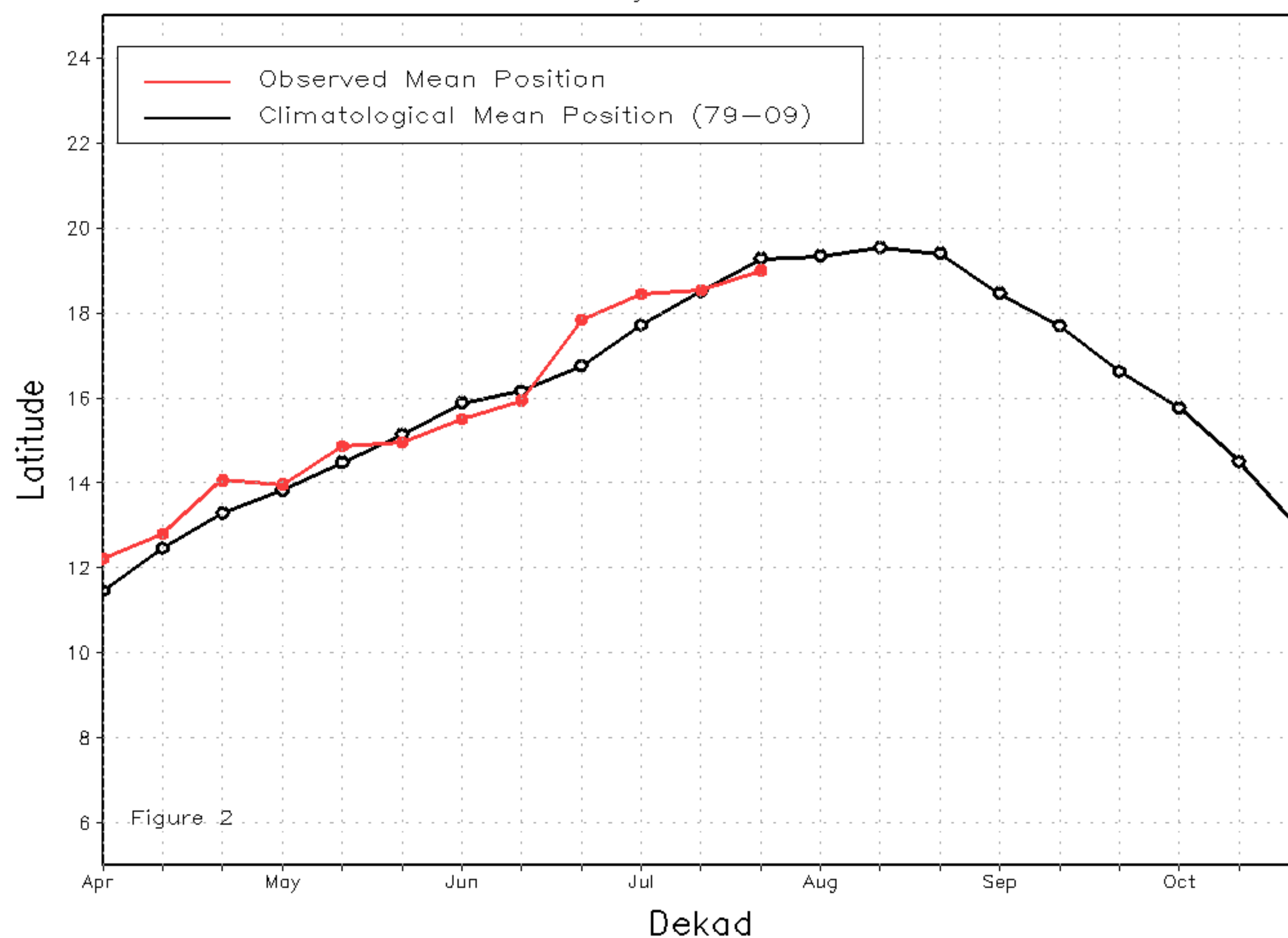
From July 21-31, 2013, the ITF advanced further north and nearly coincided with its long-term average position across Africa. Vigorous southerly winds enhanced moisture and resulted in above-average rainfall during the period across portions of the far west West Africa, including northern Senegal and southern Mauritania. However, the ITFs mean western portion was slightly below-average and trailed the climatological position by 0.3 degree. Farther east, strong southerly winds also pushed moisture to the north, bringing seasonable rain over western Sudan and moderate to heavy rain across Eritrea. The ITFs mean eastern portion was located approximately at 16.5 degrees North, which was to the south of the mean position by 0.1 degree. Figure 1 shows the current ITF position relative to the long-term average position during the third dekad of July and its previous position during the second dekad of July. Figures 2 and 3 are time series, showing the average latitudinal position of the western and eastern portion of the ITF, respectively, and their evolutions since April, 2013.

Current vs. Normal Dekadal ITF Position
and RFE Accumulated Precipitation (mm)

July 2013, Dekad 3



Mean Western Portion of the ITF: Averaged 10W to 10E
As of: July 2013, Dekad 3



Mean Eastern Portion of the ITF: Averaged 20E to 35E
As of: July 2013, Dekad 3

