



CPC Africa Desk InterTropical (ITF) Front Analysis

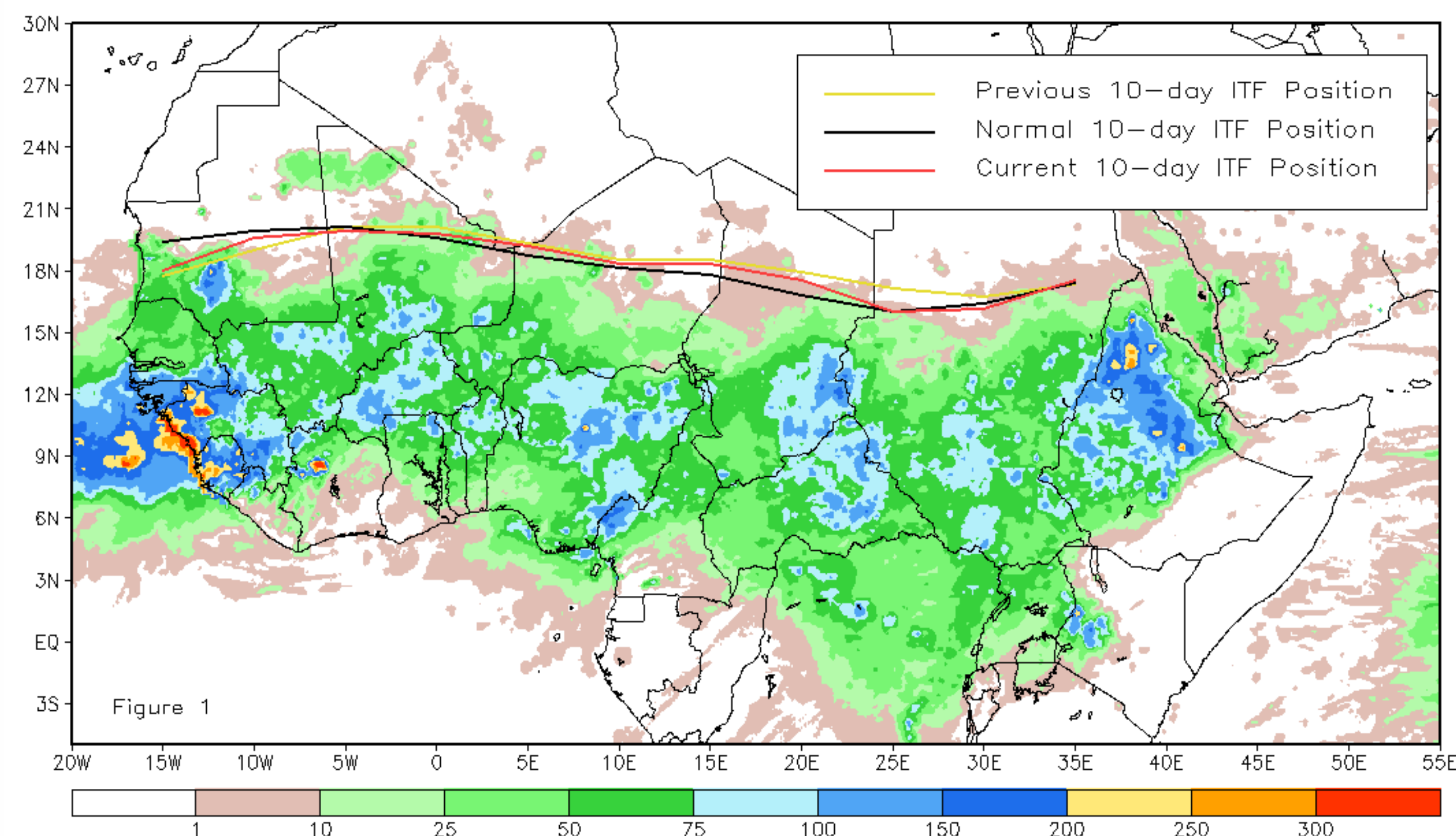
July 2012, Dekad 3

Discussion:

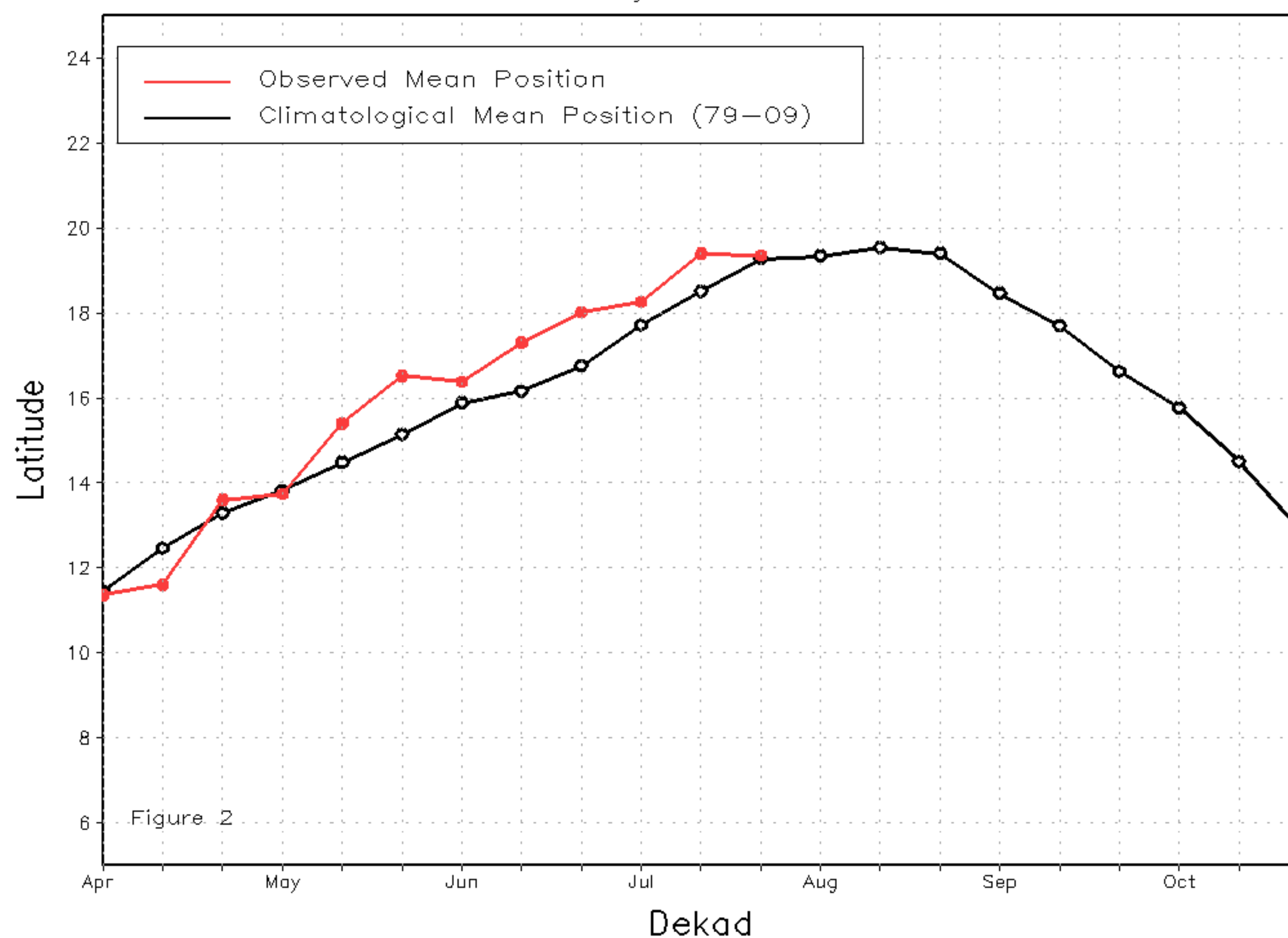
From July 21-31, 2012, the ITF retreated slightly from its previous position during the second dekad of July and nearly coincided with the long-term climatological position during the third dekad of July. However, both mean western and eastern portions of the ITF remained above the long-term average position due to relatively strong southerly winds, which brought downpours over Guinea, Burkina Faso, and central Nigeria. From 10W-10E, the average position of the ITF was located at 19.4N, which was ahead of the climatological mean position by 0.1 degree. From 20E-35E, the ITF mean position approximated 16.8N and also led the long-term mean position by 0.2 degree. Figure 1 shows the current ITF position relative to its long-term average position during the third dekad of July and its previous position during the second dekad of July. Figures 2 and 3 are time series, illustrating the mean latitudinal values of the western and eastern portion of the ITF, respectively, and their evolutions since April, 2012.

Current vs. Normal Dekadal ITF Position
and RFE Accumulated Precipitation (mm)

July 2012, Dekad 3



Mean Western Portion of the ITF: Averaged 10W to 10E
As of: July 2012, Dekad 3



Mean Eastern Portion of the ITF: Averaged 20E to 35E
As of: July 2012, Dekad 3

