



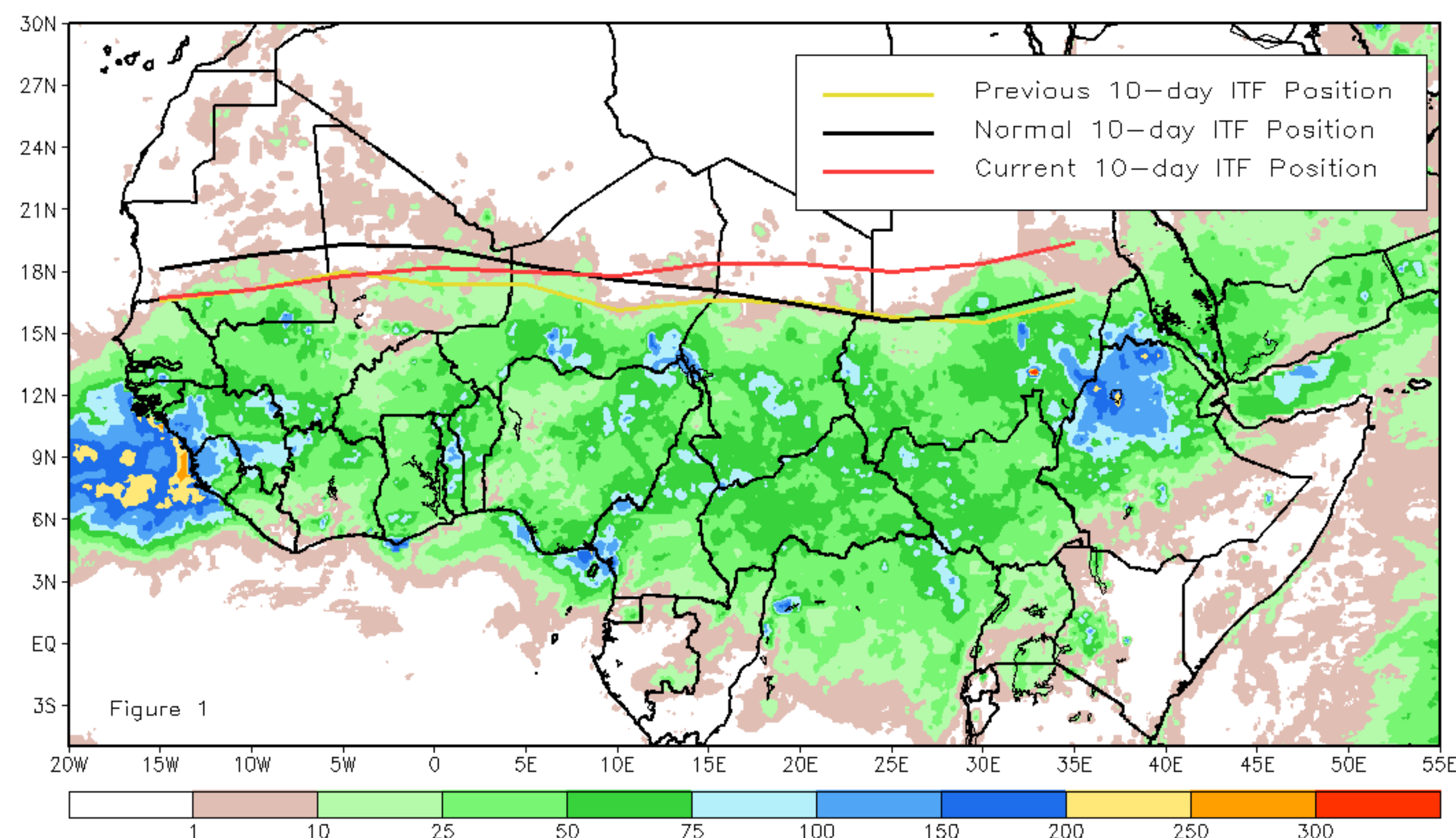
CPC Africa Desk InterTropical (ITF) Front Analysis

July 2021, Dekad 2

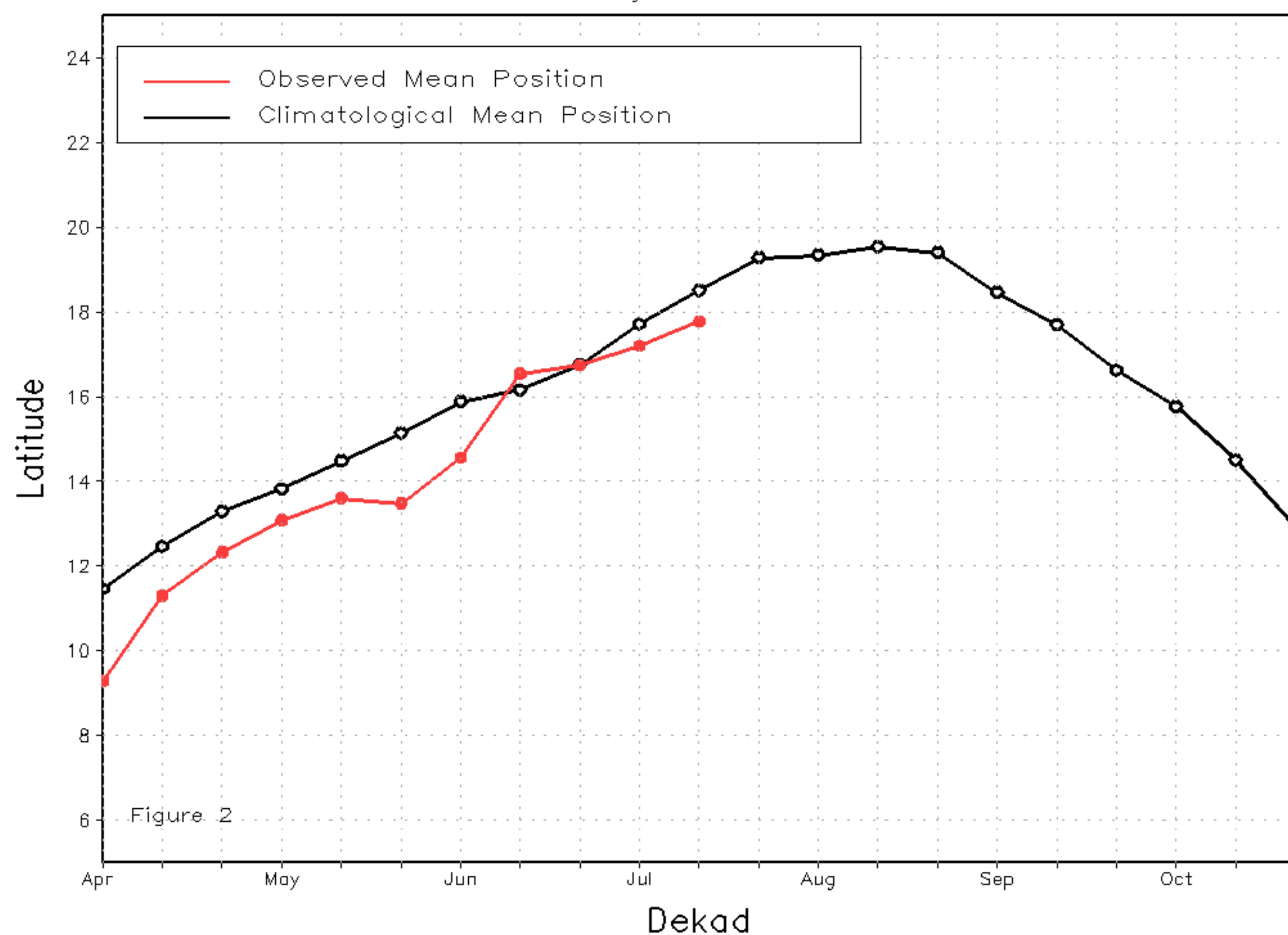
Discussion:

From 10-20 of July, the ITF east of the prime meridian moved significantly north from its previous dekadal position. The western (10W-10E) portion of the ITF was located approximately at 17.8N, whereas the average position is 18.6N. The northward propagation of the ITF west of the prime meridian stalled this dekad. This helps to explain the below-average rainfall in Senegal and Mali. The eastern (20E-35E) portion of the ITF was located at 18.5N, which was well north of the climatological position located at 16.3N and north of the previous dekad enhanced rainfall and reported floods across Chad, Sudan, Eritrea, and northern Ethiopia. Figure 1 shows the current position of the ITF relative to the long-term average position during the 2nd dekad of July and its previous position during the 1st dekad of July. Figures 2 and 3 are time series, illustrating the latitudinal values of the western and eastern portions of the ITF, respectively, and their seasonal evolutions since the beginning of April, 2021.

Current vs. Normal Dekadal ITF Position
and RFE Accumulated Precipitation (mm)
July 2021, Dekad 2



Mean Western Portion of the ITF: Averaged 10W to 10E
As of: July 2021, Dekad 2



Mean Eastern Portion of the ITF: Averaged 20E to 35E
As of: July 2021, Dekad 2

