



CPC Africa Desk InterTropical (ITF) Front Analysis

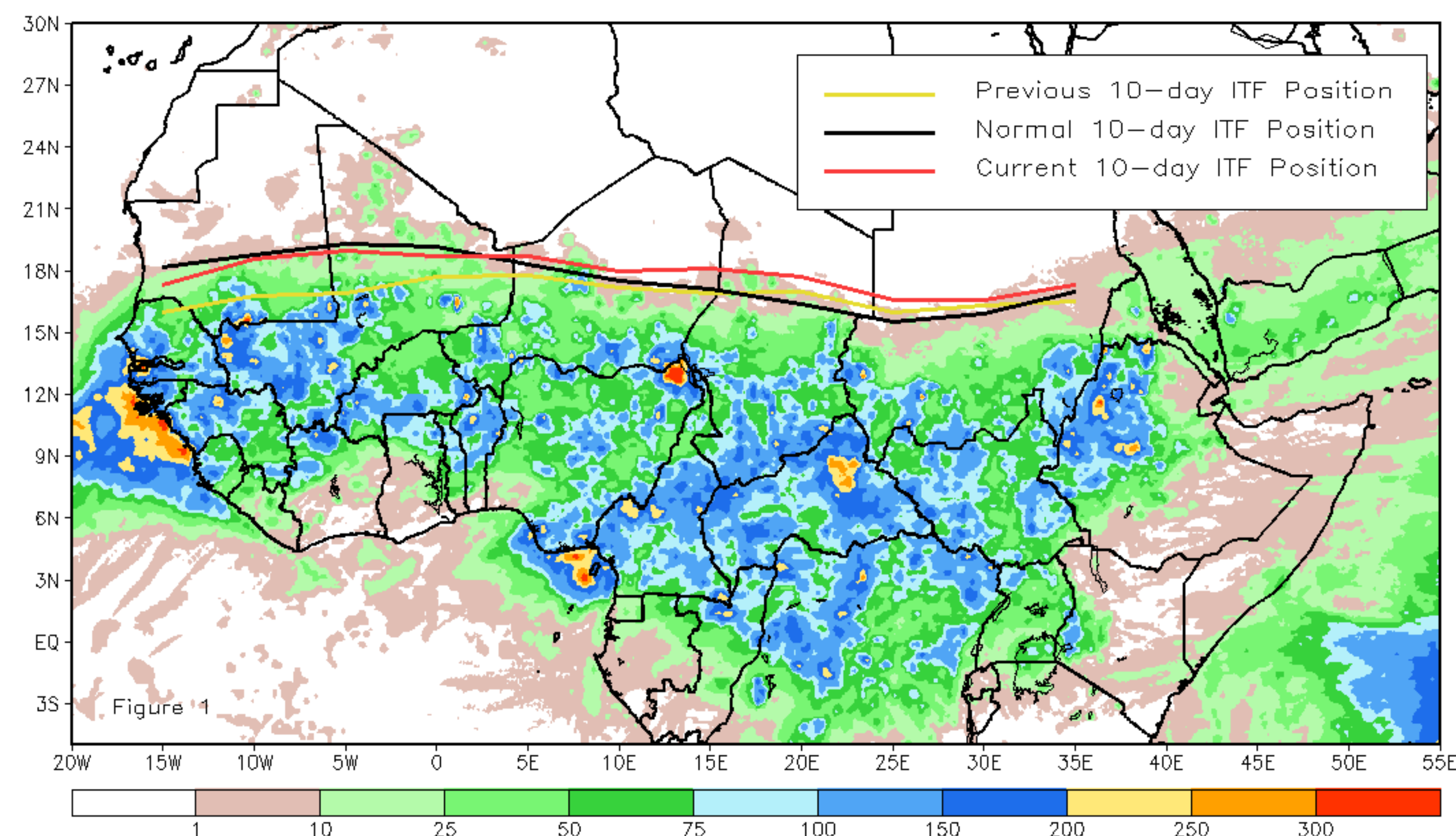
July 2020, Dekad 2

Discussion:

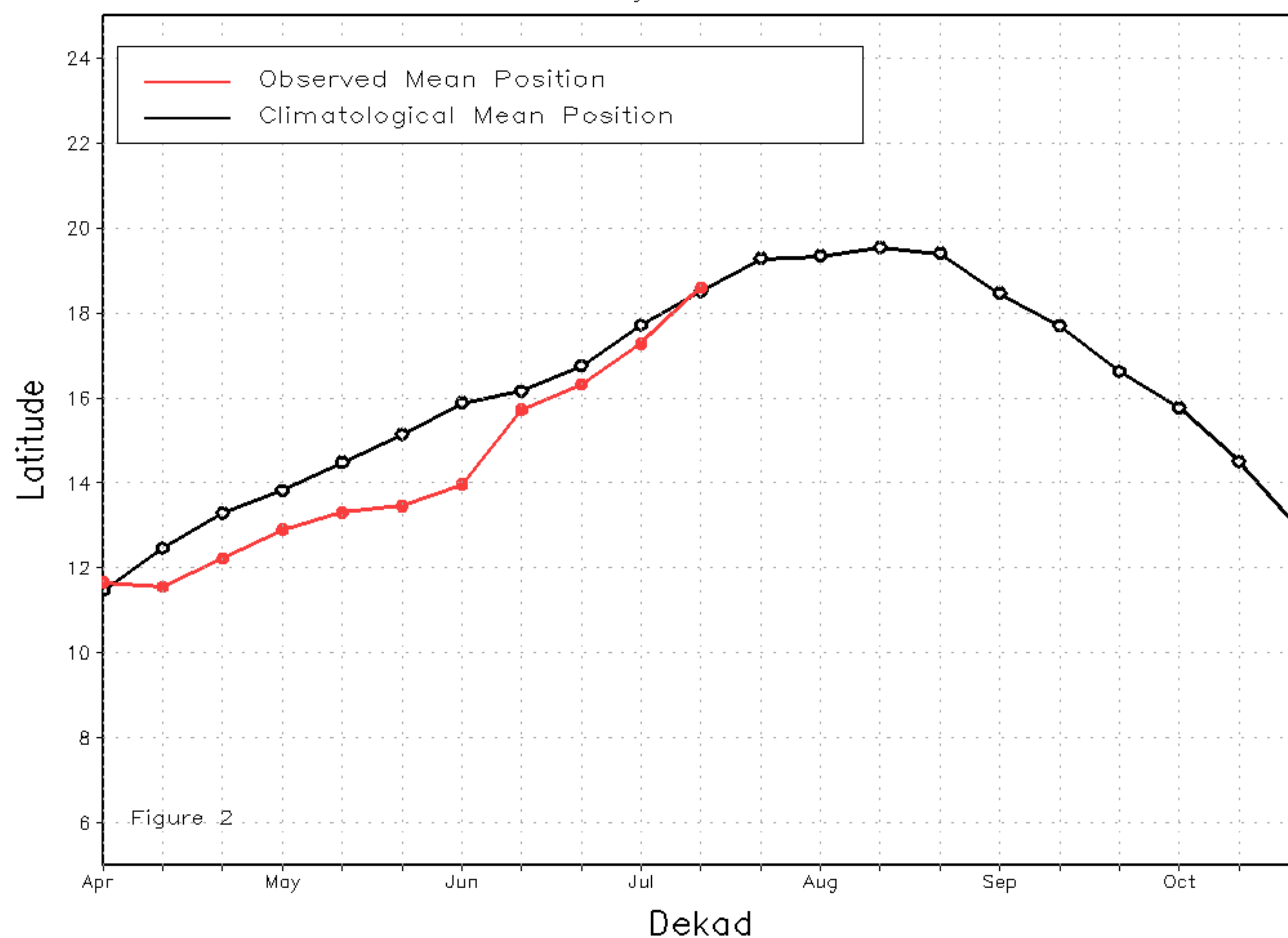
From July 11-20, the entirety of the ITF shifted northward. The ITF was located near its climatological position from 10E and westward and it was located to the north of its climatological position across Chad and parts of Niger and Sudan. Monsoonal rains remained favorably distributed across the continent. The mean western (10W-10E) portion of the ITF was approximated at 18.6N, which is the same as the long-term mean position and 1.3 degrees north of its position the previous dekad. The mean eastern (20E-35E) portion of the ITF was located at 17.0N, which is 0.8 degrees north of the long-term mean position. Figure 1 displays the current position of the ITF relative to the long-term climatological position during the 2nd dekad of July and its previous position during the 1st dekad of July. Figures 2 and 3 are time series, illustrating the latitudinal values of the western and eastern portions of the ITF, respectively, and their seasonal evolutions since April, 2020.

Current vs. Normal Dekadal ITF Position
and RFE Accumulated Precipitation (mm)

July 2020, Dekad 2



Mean Western Portion of the ITF: Averaged 10W to 10E
As of: July 2020, Dekad 2



Mean Eastern Portion of the ITF: Averaged 20E to 35E
As of: July 2020, Dekad 2

