



# CPC Africa Desk InterTropical (ITF) Front Analysis

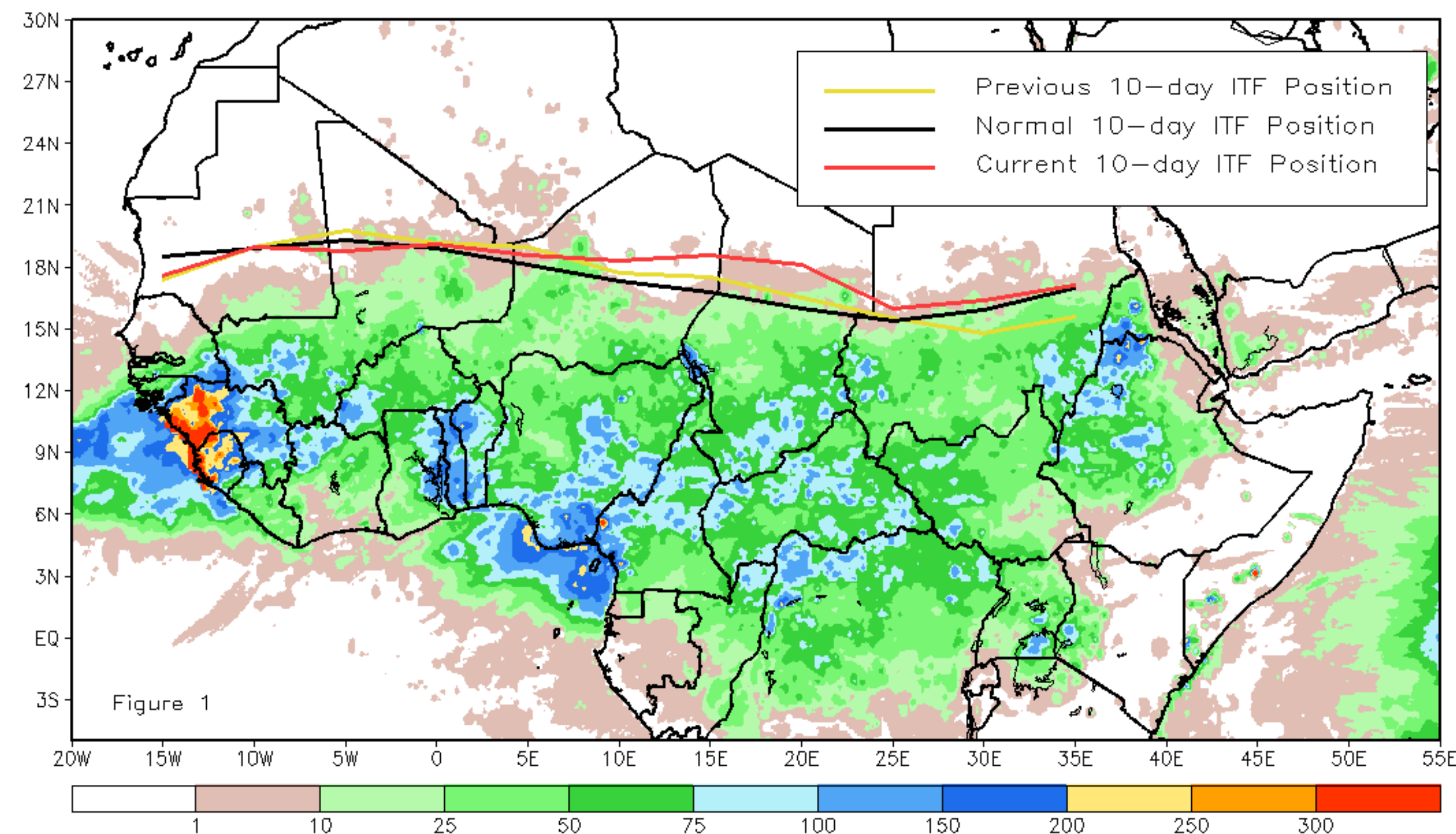
## July 2019, Dekad 2

### Discussion:

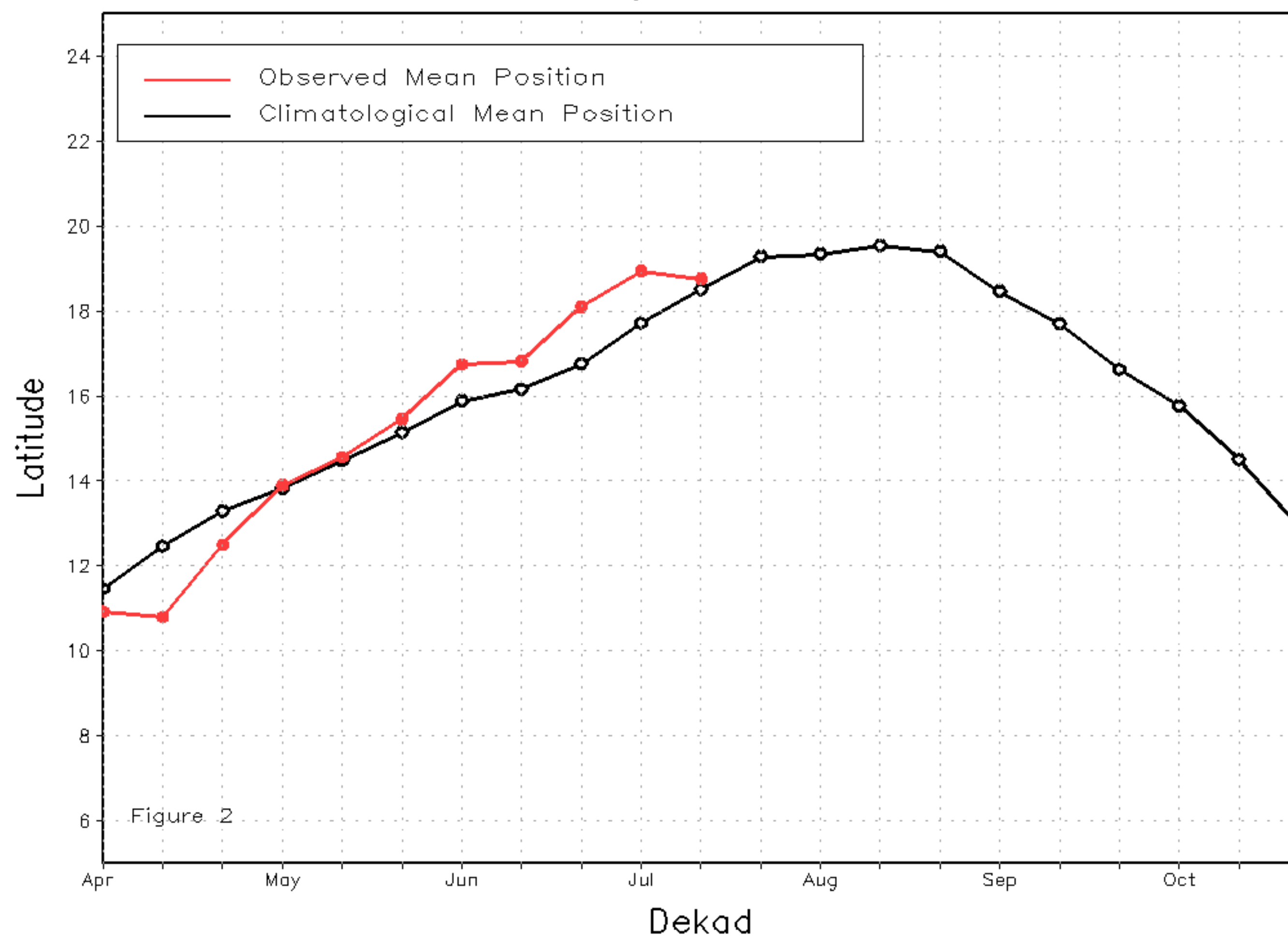
From July 11-20, the ITF moved little from its position during the previous dekad in West Africa, but progressed well northward in eastern Africa. The position of the mean western (15W-0E) portion of the ITF is approximated at 18.8N, which is slightly south of its previous location during the first Dekad of July. The position of the western end of the ITF south of its climatological location contributed to poor rainfall performance over Senegal. Between 0E-35E, the ITF was approximated at 16.9N, north of its climatological position by 0.8 degrees and well north of its position during the previous dekad by 1.3 degrees. Increased rains were observed in Sudan concurrent with the northward displacement of the ITF. Figure 1 shows the current position of the ITF relative to the long-term average position during the 2nd dekad of July and its previous position during the 1st dekad of July. Figures 2 and 3 are time series, illustrating the latitudinal values of the western and eastern portions of the ITF, respectively, and their seasonal evolutions since April, 2019.

Current vs. Normal Dekadal ITF Position  
and RFE Accumulated Precipitation (mm)

July 2019, Dekad 2



Mean Western Portion of the ITF: Averaged 10W to 10E  
As of: July 2019, Dekad 2



Mean Eastern Portion of the ITF: Averaged 20E to 35E  
As of: July 2019, Dekad 2

