



# CPC Africa Desk InterTropical (ITF) Front Analysis

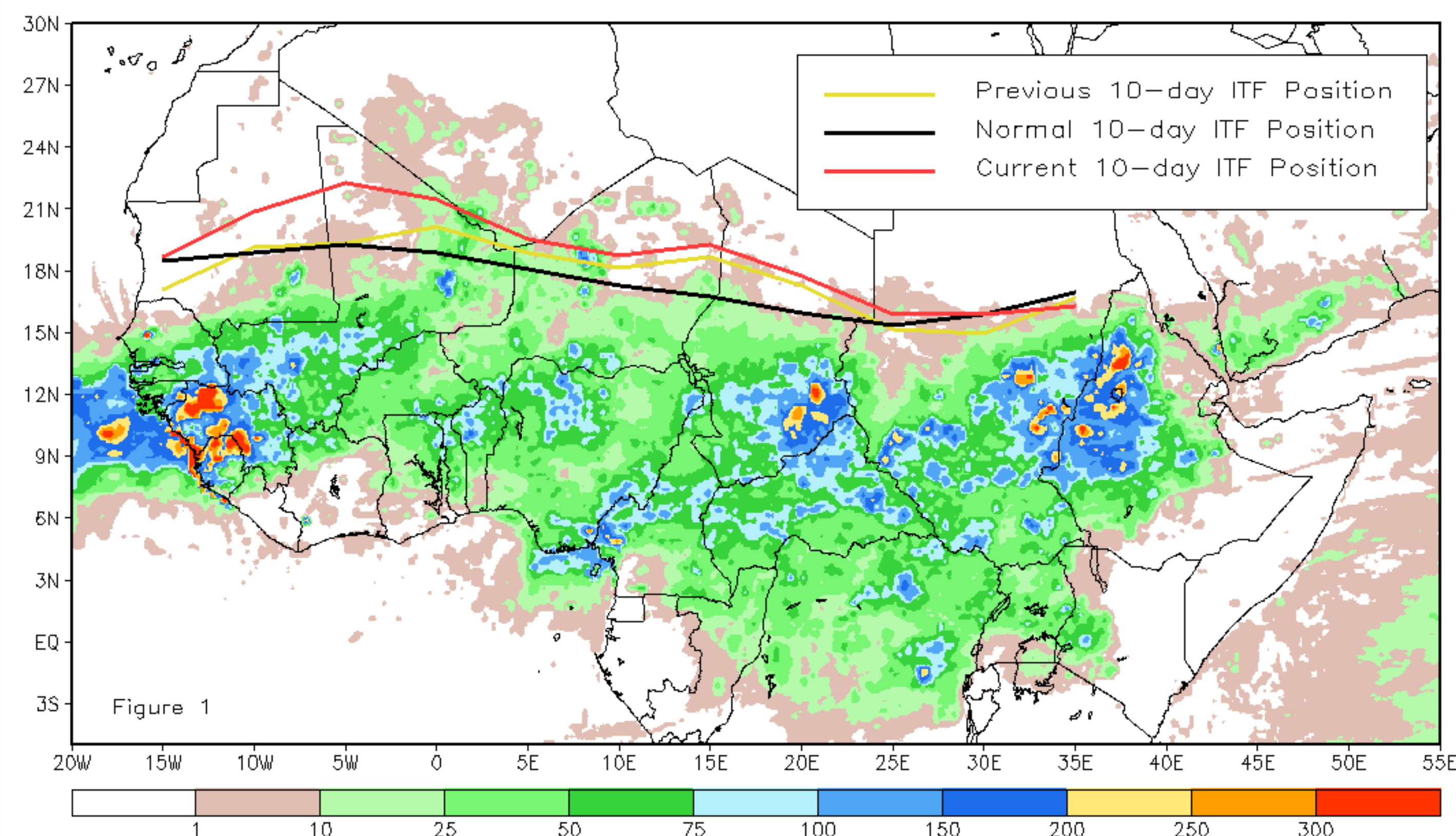
## July 2017, Dekad 2

### Discussion:

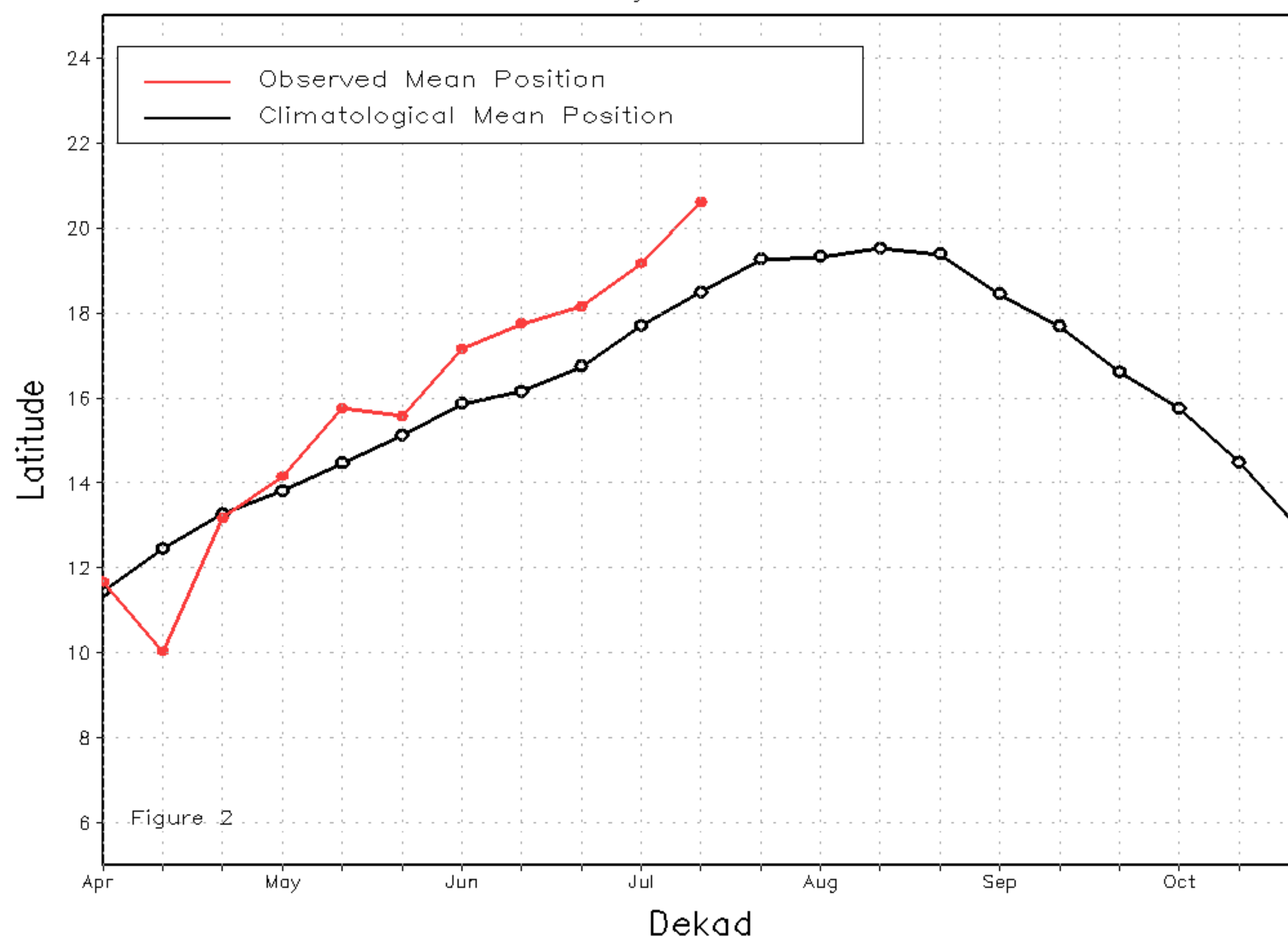
From July 11-20, the ITF experienced northward advancement relative to its previous position along its entire axis. Advancement was most pronounced along its western portion with a position nearly a degree and half north of the previous dekad. The western (10W-10E) portion of the ITF was approximated at 20.6N, which was well to the north of the long-term average position by 2.1 degrees. This allowed for a significant push of precipitation into northern Mali, Niger and Algeria. The eastern (20E-35E) portion of the ITF was located at 16.5N, which was to the north of the long-term average position by 0.4 degrees. This led to another dekad of above-average rainfall over parts of western Ethiopia and Sudan. Figure 1 shows the current position of the ITF relative to its climatological position during the 2nd dekad of July and its previous position during the 1st dekad of July. Figures 2 and 3 are time series, illustrating the mean latitudinal values of the western and eastern portion of the ITF, respectively, and their evolutions since April, 2017.

Current vs. Normal Dekadal ITF Position  
and RFE Accumulated Precipitation (mm)

July 2017, Dekad 2



Mean Western Portion of the ITF: Averaged 10W to 10E  
As of: July 2017, Dekad 2



Mean Eastern Portion of the ITF: Averaged 20E to 35E  
As of: July 2017, Dekad 2

