



CPC Africa Desk InterTropical (ITF) Front Analysis

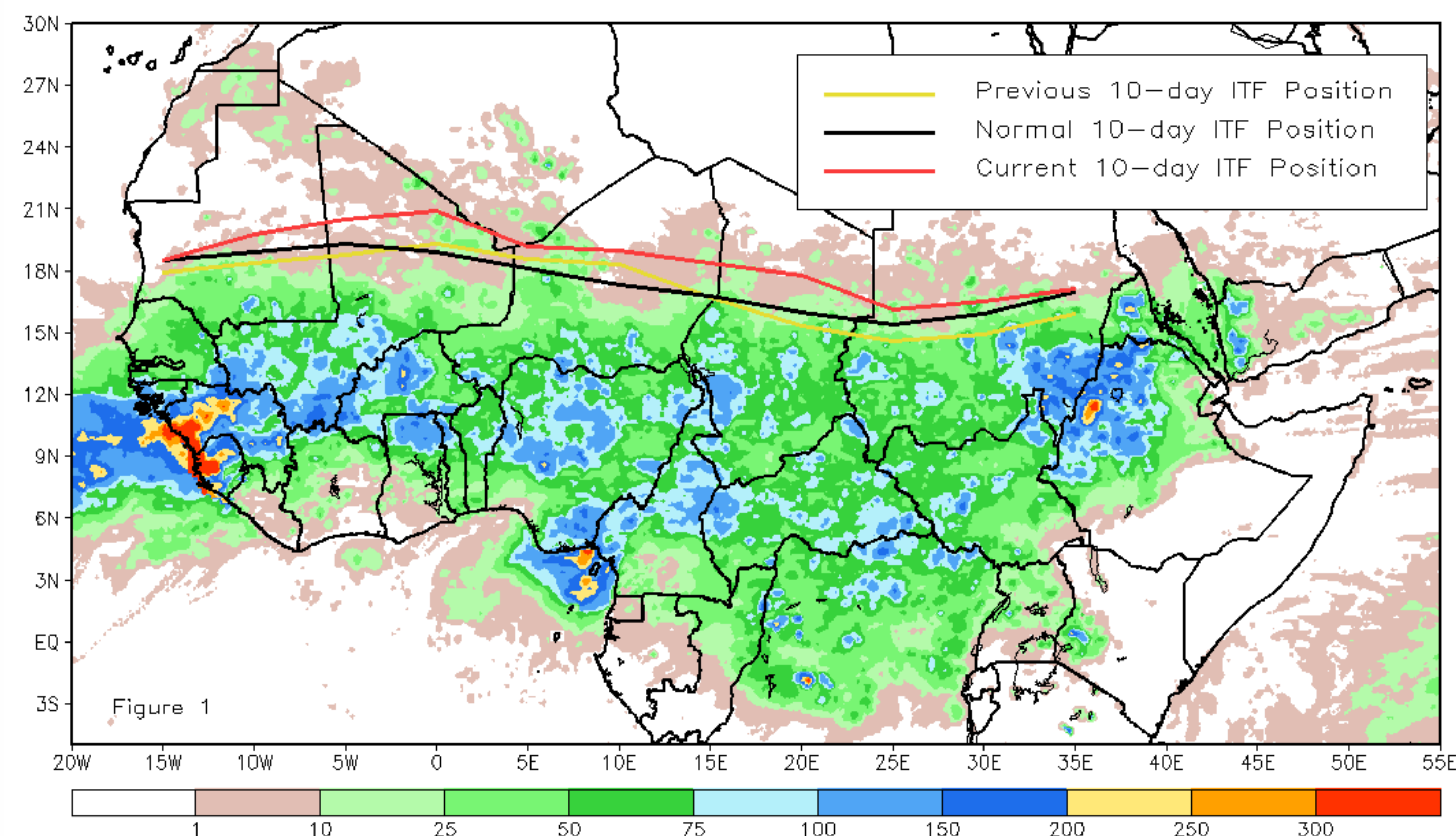
July 2016, Dekad 2

Discussion:

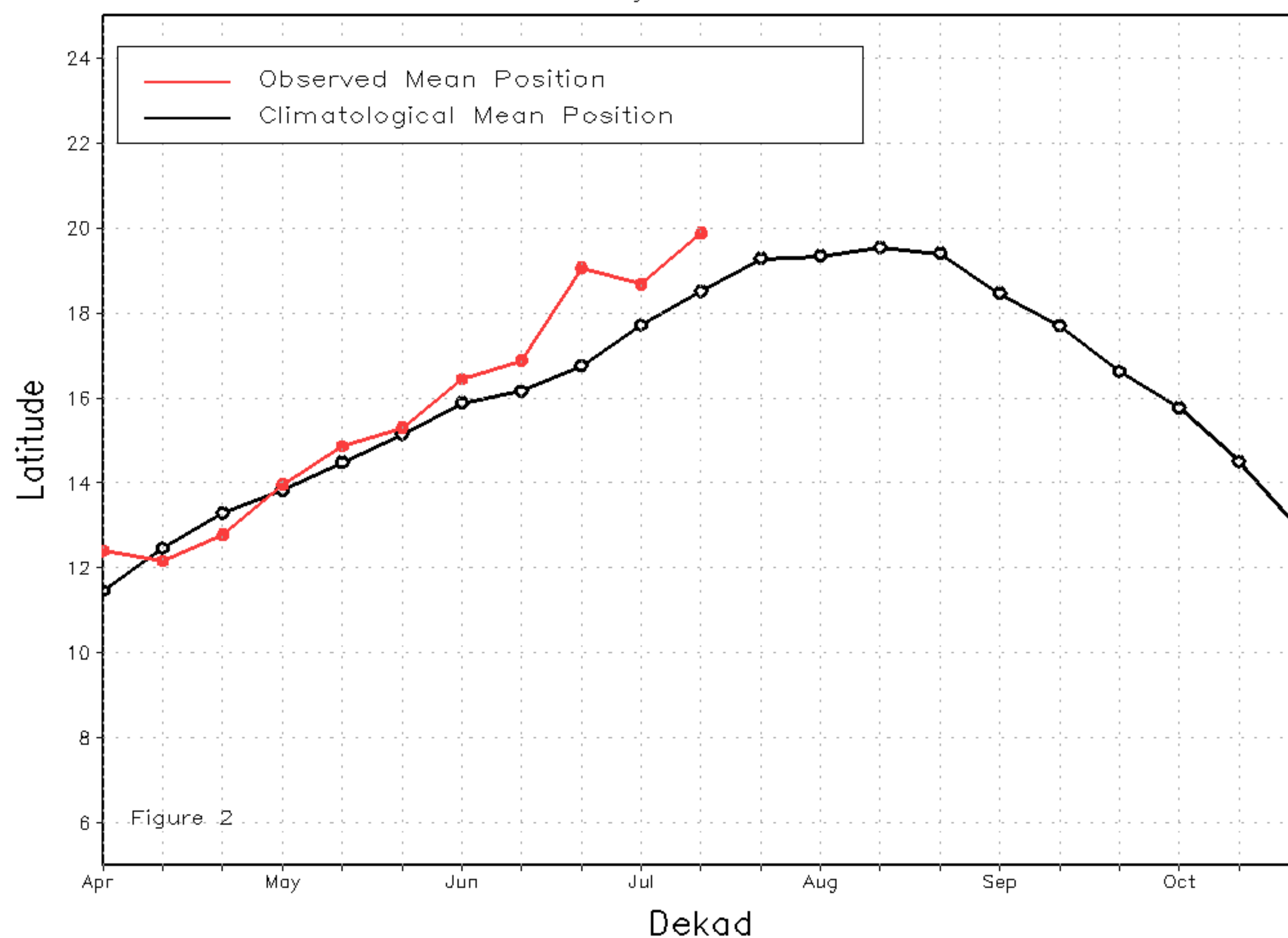
From July 11-20, the Inter-tropical Front (ITF) resumed its northward progression. It was located uniformly to the north of its average position. The mean western (10W-10E) portion of the ITF was located at 19.9N and was to the north of the average position by 1.4 degrees. This coincided with northward displacement of the heaviest band of rain from its climatological location. Meanwhile, the mean eastern (20E-35E) portion of the ITF was centered upon 16.9N, which was north of the average position of 15.3 degrees. This has resulted in anomalous flooding rains throughout many areas of Sudan. Figure 1 displays the current position of the ITF relative to its climatological position during the 2nd dekad of July and its previous position during the 1st dekad of July. Figures 2 and 3 are time series, illustrating the mean latitudinal values of the western and eastern portion of the ITF, respectively, and their evolutions since April, 2016.

Current vs. Normal Dekadal ITF Position
and RFE Accumulated Precipitation (mm)

July 2016, Dekad 2



Mean Western Portion of the ITF: Averaged 10W to 10E
As of: July 2016, Dekad 2



Mean Eastern Portion of the ITF: Averaged 20E to 35E
As of: July 2016, Dekad 2

