



CPC Africa Desk InterTropical (ITF) Front Analysis

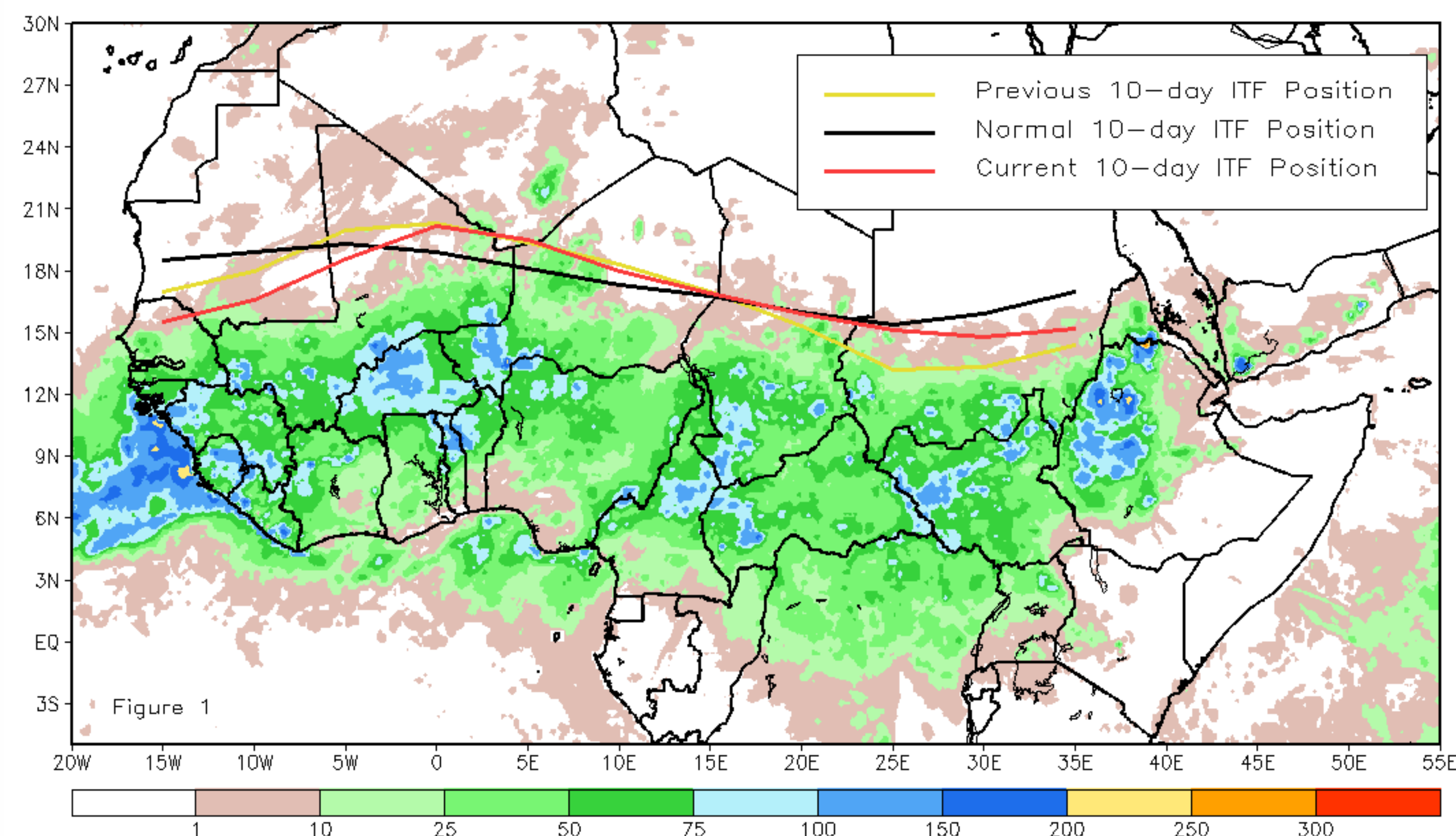
July 2015, Dekad 2

Discussion:

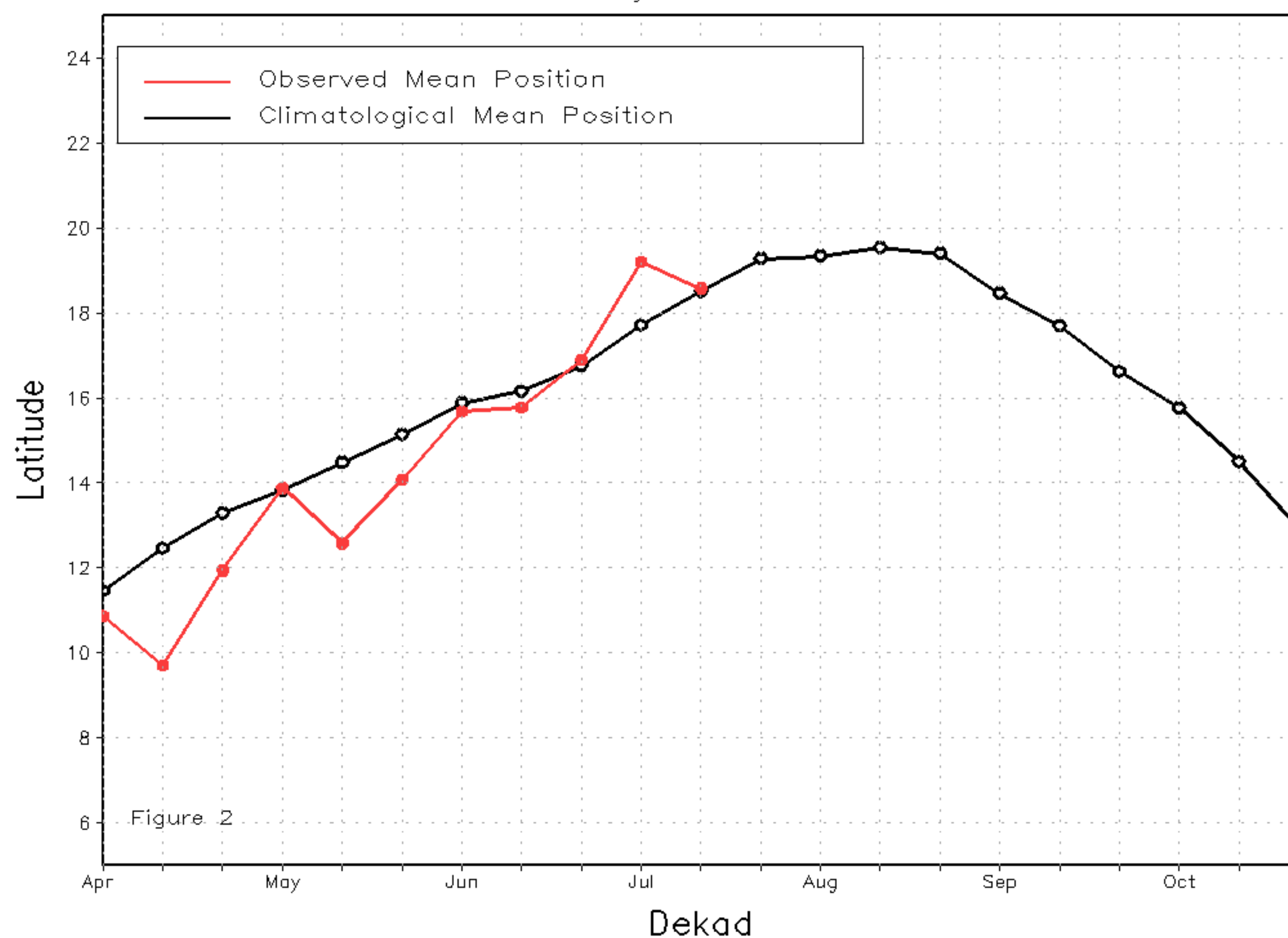
From July 11-20, 2015, the ITF experienced an asymmetric movement relative to its position during the previous dekad along its edges. The ITF exhibited a northward advancement along its eastern segment in contrast to a southward retreat along its western counterpart. Meanwhile, the ITF stagnated roughly over its position during the first dekad of July across its central portion. As a result, slightly below-average rainfall was observed over parts of western West Africa and northern Eastern Africa, while above-average rainfall persisted throughout central West Africa. The mean western (10W-10E) portion of the ITF was located at 18.6N, which was barely to the north of the mean position by 0.1 degree, but was to the south of last year 0.4 degree. The mean eastern (20E-35E) portion of the ITF was approximated at only 15.2N, which was both to the south of the long-term average position and last year displays the current position of the ITF relative to its climatological position during the second dekad of July and its former position during the 1st dekad of July. Figures 2 and 3 are time series, illustrating the mean latitudinal values of the western and eastern portion of the ITF, respectively, and their evolutions since April, 2015.

Current vs. Normal Dekadal ITF Position
and RFE Accumulated Precipitation (mm)

July 2015, Dekad 2



Mean Western Portion of the ITF: Averaged 10W to 10E
As of: July 2015, Dekad 2



Mean Eastern Portion of the ITF: Averaged 20E to 35E
As of: July 2015, Dekad 2

