



CPC Africa Desk InterTropical (ITF) Front Analysis

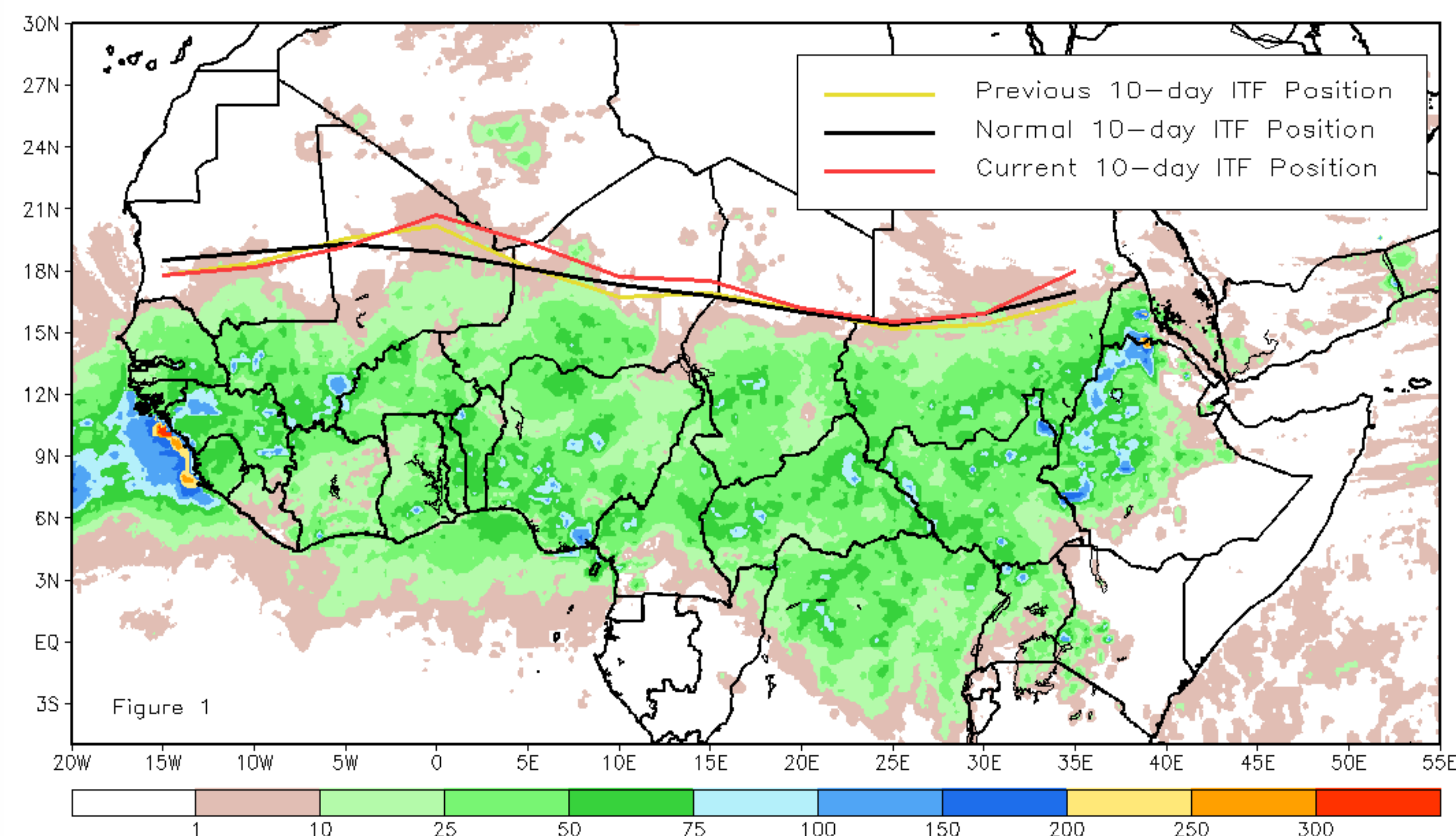
July 2014, Dekad 2

Discussion:

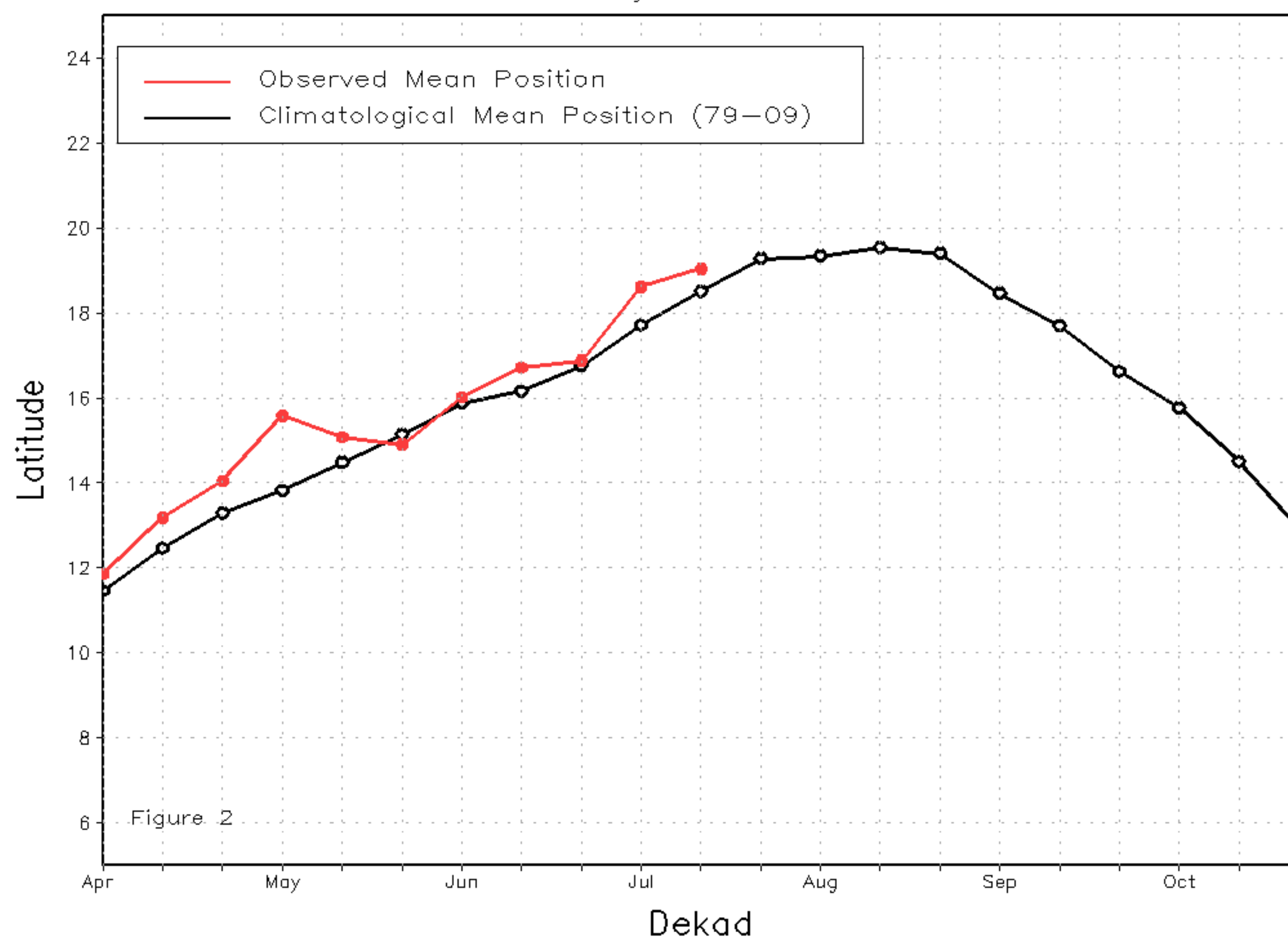
From July 11-20, 2014, the ITF continued its northward progression across Africa. Due to vigorous southerly winds, the ITF pushed farther north both along its western (10W-10E) and eastern (20E-35E) segments relative to their respective average positions during this period. The mean western portion of the ITF was located nearly at 19N, which was ahead of the average position by 0.5 degree. The mean eastern portion of the ITF was approximated at 16.4N and also led the climatological position by 0.3 degree. Figure 1 shows the current ITF position relative to its long-term average position during the 2nd dekad of July and its previous position during the 1st dekad of July. Figures 2 and 3 are time series, illustrating the mean latitudinal values of the western and eastern portion of the ITF, respectively, and their evolutions since April, 2014.

Current vs. Normal Dekadal ITF Position
and RFE Accumulated Precipitation (mm)

July 2014, Dekad 2



Mean Western Portion of the ITF: Averaged 10W to 10E
As of: July 2014, Dekad 2



Mean Eastern Portion of the ITF: Averaged 20E to 35E
As of: July 2014, Dekad 2

