



CPC Africa Desk InterTropical (ITF) Front Analysis

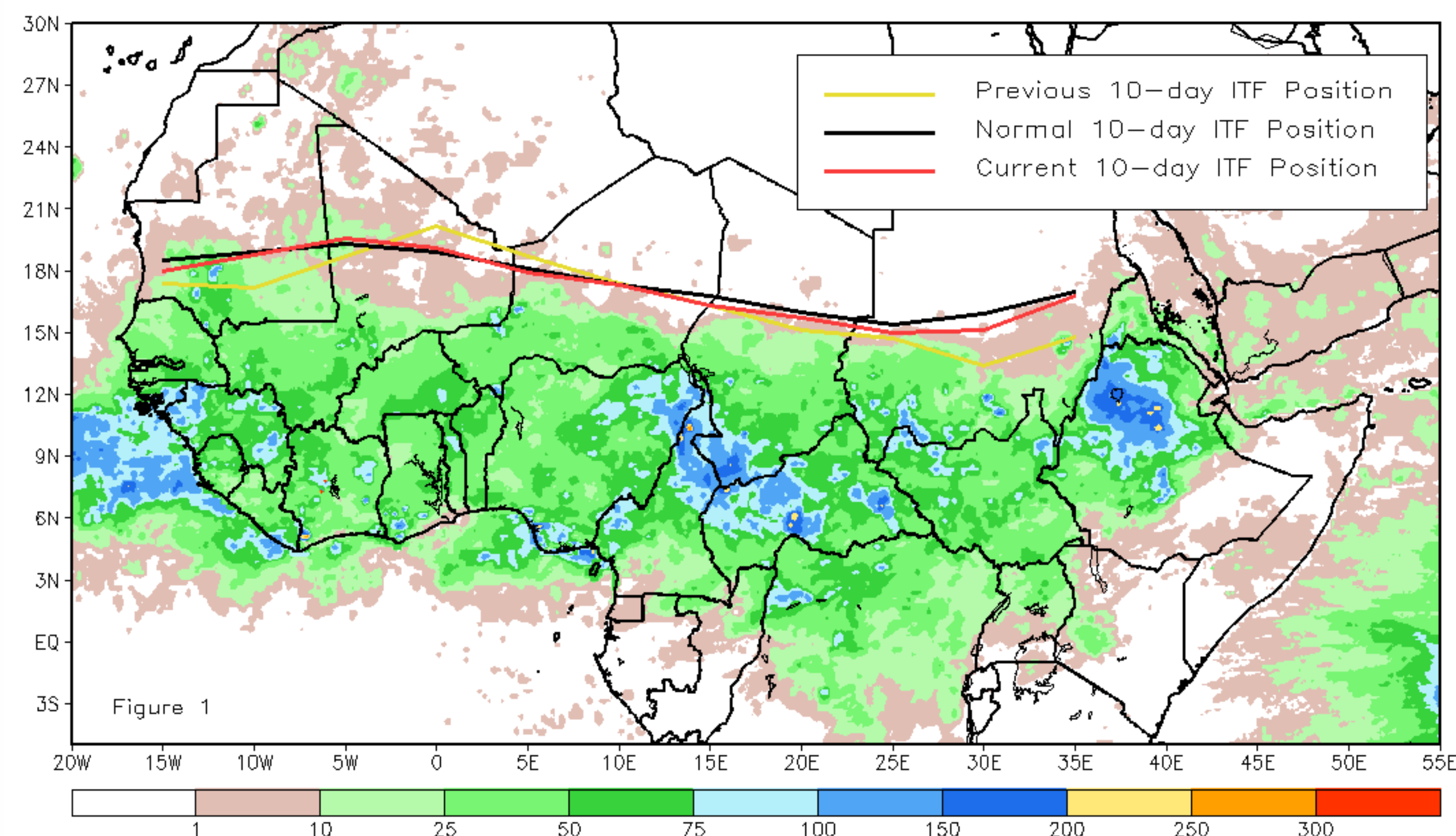
July 2013, Dekad 2

Discussion:

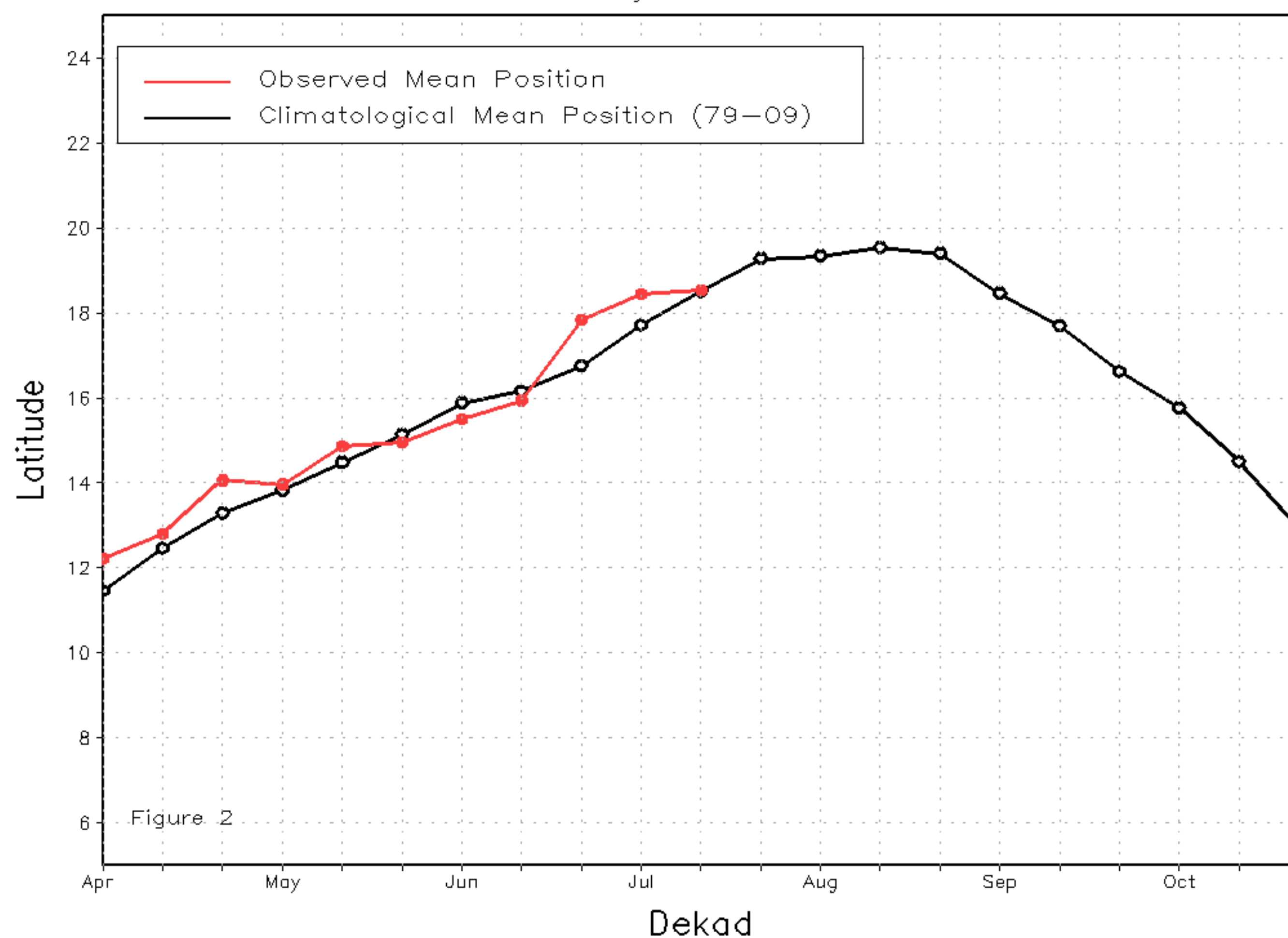
From July 11-20, 2013, the ITF advanced slightly to the North relative to its position during the previous period and nearly coincided with the long-term climatological position across Africa. While the ITF mean western portion was centered upon 18.5 degrees North, which was co-located with the average position, the ITF mean eastern segment was below-average, with its center located near 15.6 degrees north, which lagged the climatological mean position by half a degree. The near-average position of the ITF across the western parts of West Africa resulted in heavy and above-average rain in southern Mauritania, whereas the ITF slightly below-average position in eastern Africa brought another period of below-average rain over eastern Sudan. Figure 1 shows the current ITF position relative to the long-term average position during the second dekad of July and its previous position during the first dekad of July. Figures 2 and 3 are time series, showing the average latitudinal values of the western and eastern portion of the ITF, respectively, and their evolutions since April, 2013.

Current vs. Normal Dekadal ITF Position
and RFE Accumulated Precipitation (mm)

July 2013, Dekad 2



Mean Western Portion of the ITF: Averaged 10W to 10E
As of: July 2013, Dekad 2



Mean Eastern Portion of the ITF: Averaged 20E to 35E
As of: July 2013, Dekad 2

