



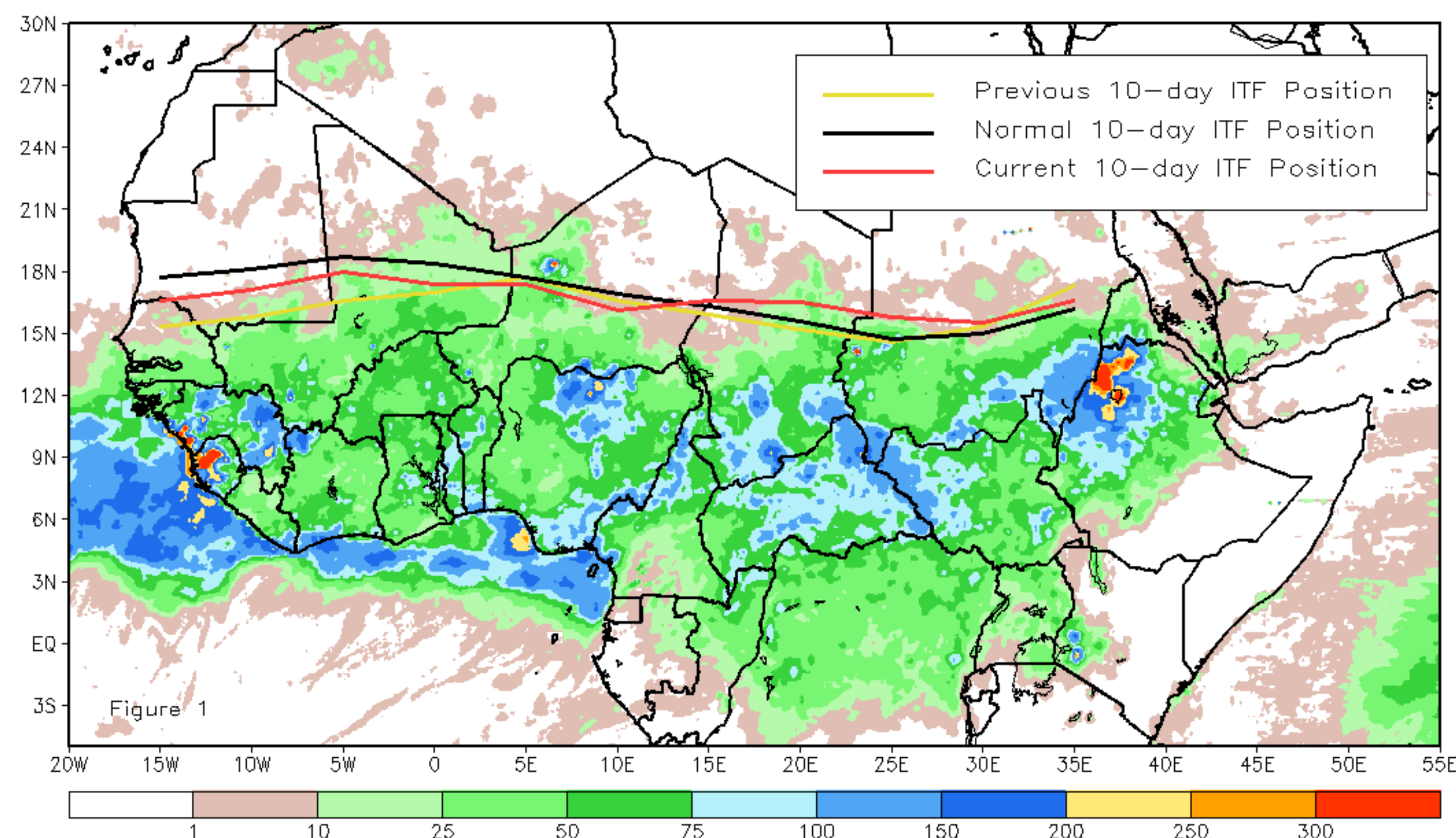
CPC Africa Desk InterTropical (ITF) Front Analysis

July 2021, Dekad 1

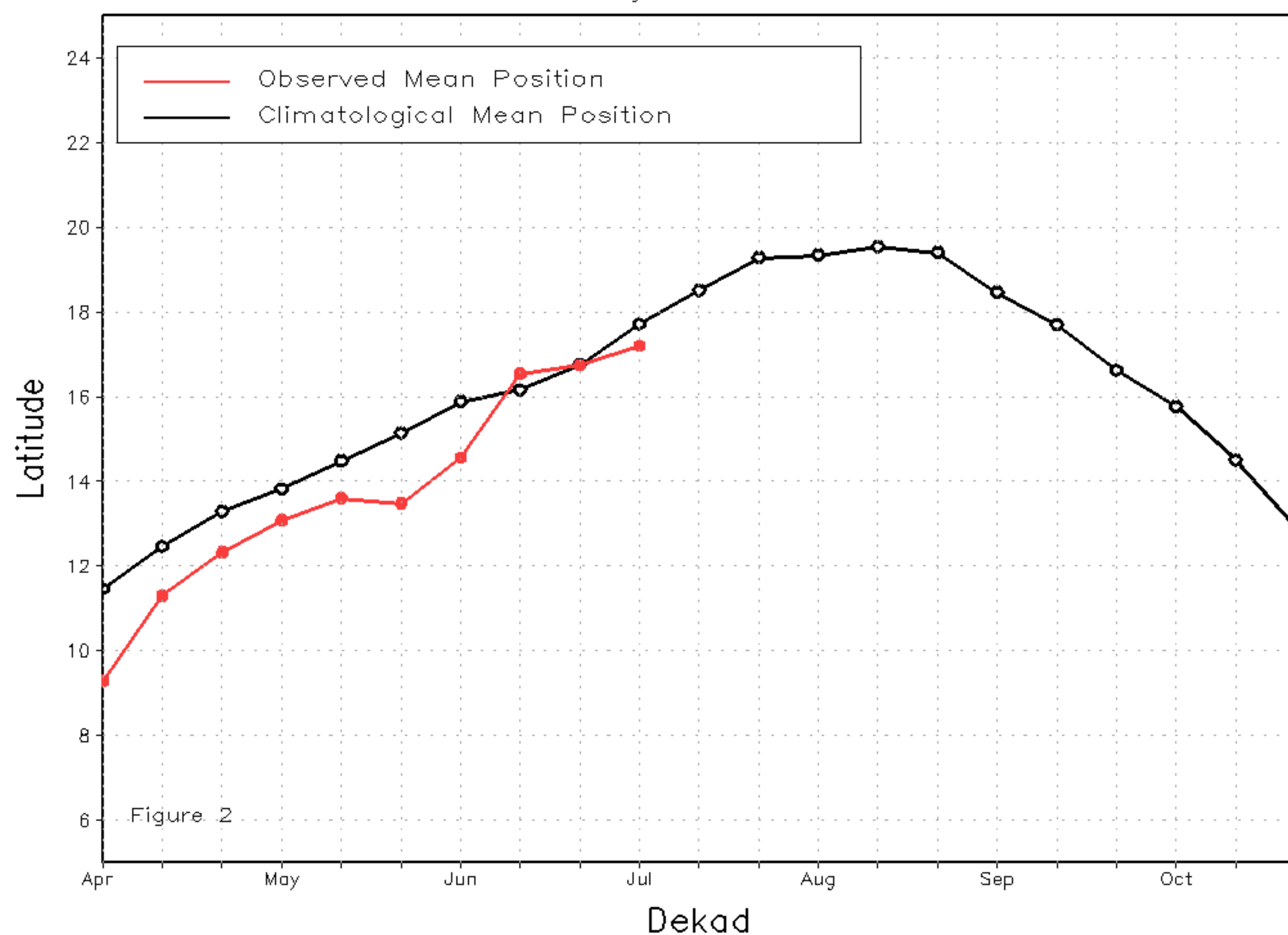
Discussion:

From 1-10 of July, the ITF has moved slightly north along most of its axis from its previous dekadal position. The western (10W-10E) portion of the ITF was located approximately at 17.2N, whereas the average position is 18.0N. This helps to explain some suppressed rainfall in Senegal. Despite the lagging position of the ITF, moderate rainfall surged far to the north in Mali and Niger. The eastern (20E-35E) portion of the ITF was located at 16.1N, which was north of the climatological position located at 15.4N. This position could explain the ample rainfall across Chad, southern Sudan, Eritrea, and northwestern Ethiopia. Figure 1 shows the current position of the ITF relative to the long-term average position during the 1st dekad of July and its previous position during the 3rd dekad of June. Figures 2 and 3 are time series, illustrating the latitudinal values of the western and eastern portions of the ITF, respectively, and their seasonal evolutions since the beginning of April, 2021.

Current vs. Normal Dekadal ITF Position
and RFE Accumulated Precipitation (mm)
July 2021, Dekad 1



Mean Western Portion of the ITF: Averaged 10W to 10E
As of: July 2021, Dekad 1



Mean Eastern Portion of the ITF: Averaged 20E to 35E
As of: July 2021, Dekad 1

