



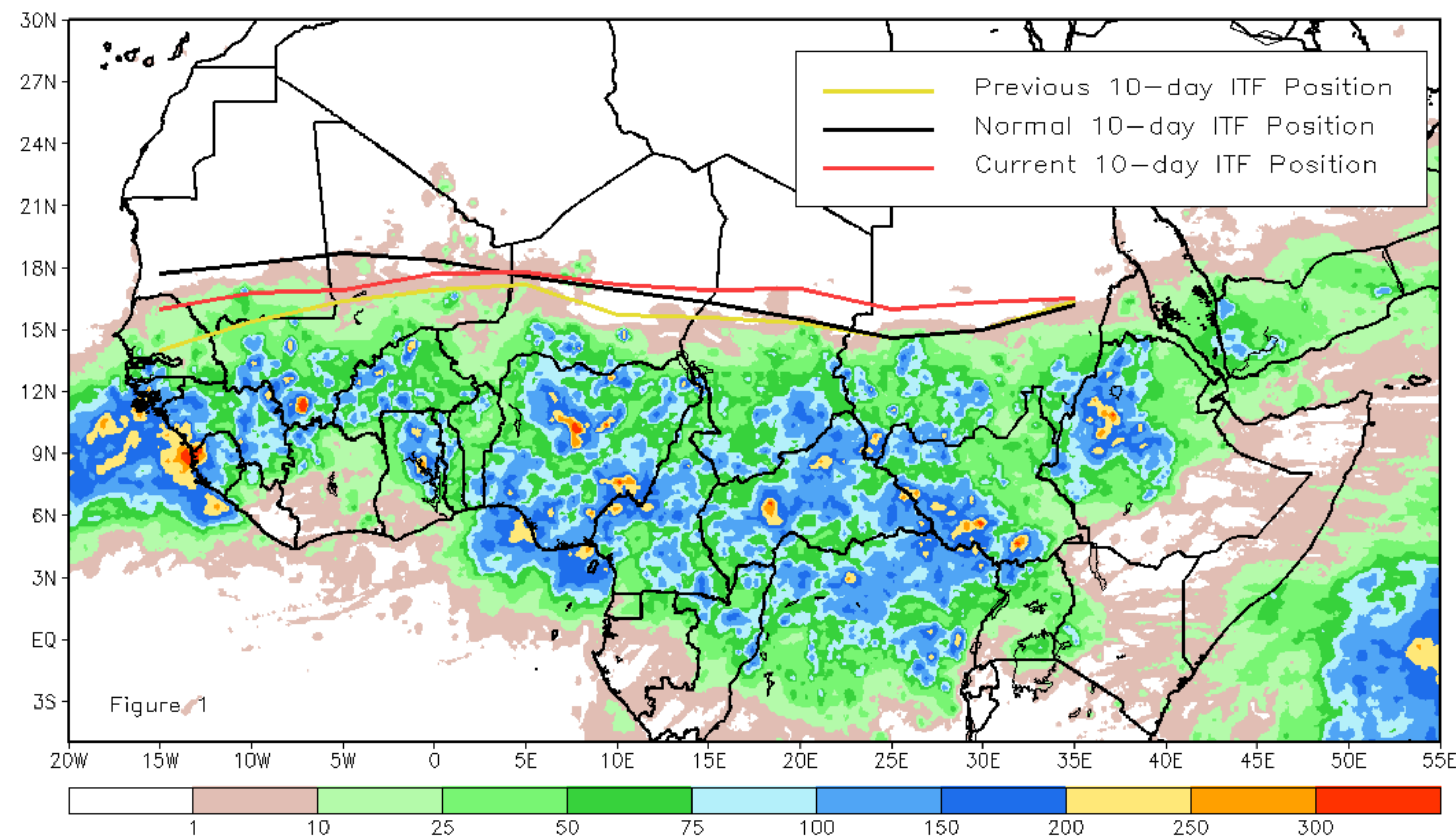
CPC Africa Desk InterTropical (ITF) Front Analysis

July 2020, Dekad 1

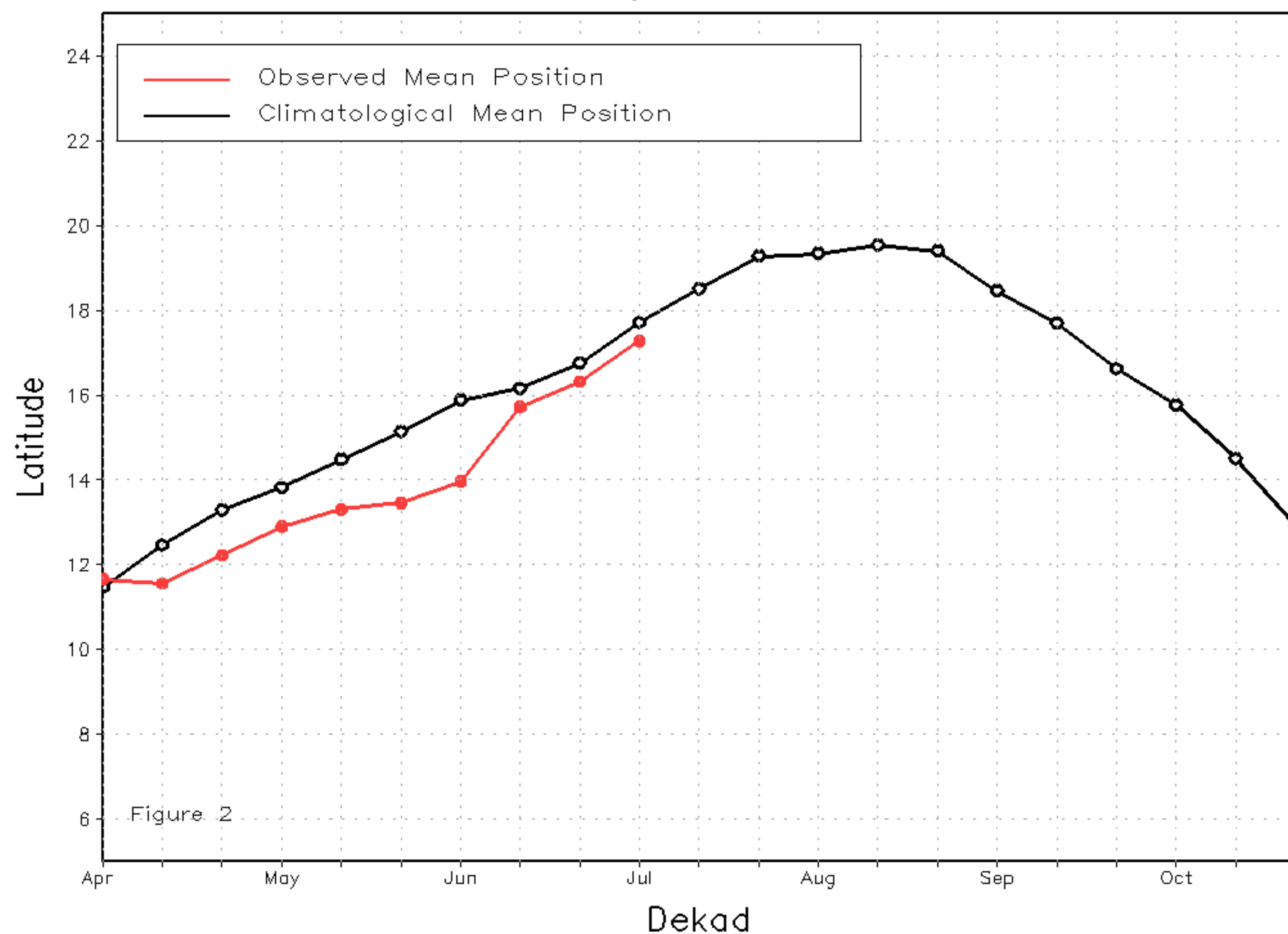
Discussion:

From July 1-10, the entirety of the ITF moved northward. The ITF resided south of its climatological position from 5E and westward, while the eastern half resided north of its climatological position. Despite some shifts in the position of the ITF away from normal, the northward extent of the monsoonal rains remained near its normal position. The mean western (10W-10E) portion of the ITF was approximated at 17.3N, which is about 0.7 degrees south of the normal position. The mean eastern (20E-35E) portion of the ITF was located at 16.5N, which is about 1.2 degrees north of the long-term mean position. Figure 1 displays the current position of the ITF relative to the long-term climatological position during the 1st dekad of July and its previous position during the 3rd dekad of June. Figures 2 and 3 are time series, illustrating the latitudinal values of the western and eastern portions of the ITF, respectively, and their seasonal evolutions since April, 2020.

Current vs. Normal Dekadal ITF Position
and RFE Accumulated Precipitation (mm)
July 2020, Dekad 1



Mean Western Portion of the ITF: Averaged 10W to 10E
As of: July 2020, Dekad 1



Mean Eastern Portion of the ITF: Averaged 20E to 35E
As of: July 2020, Dekad 1

