



CPC Africa Desk InterTropical (ITF) Front Analysis

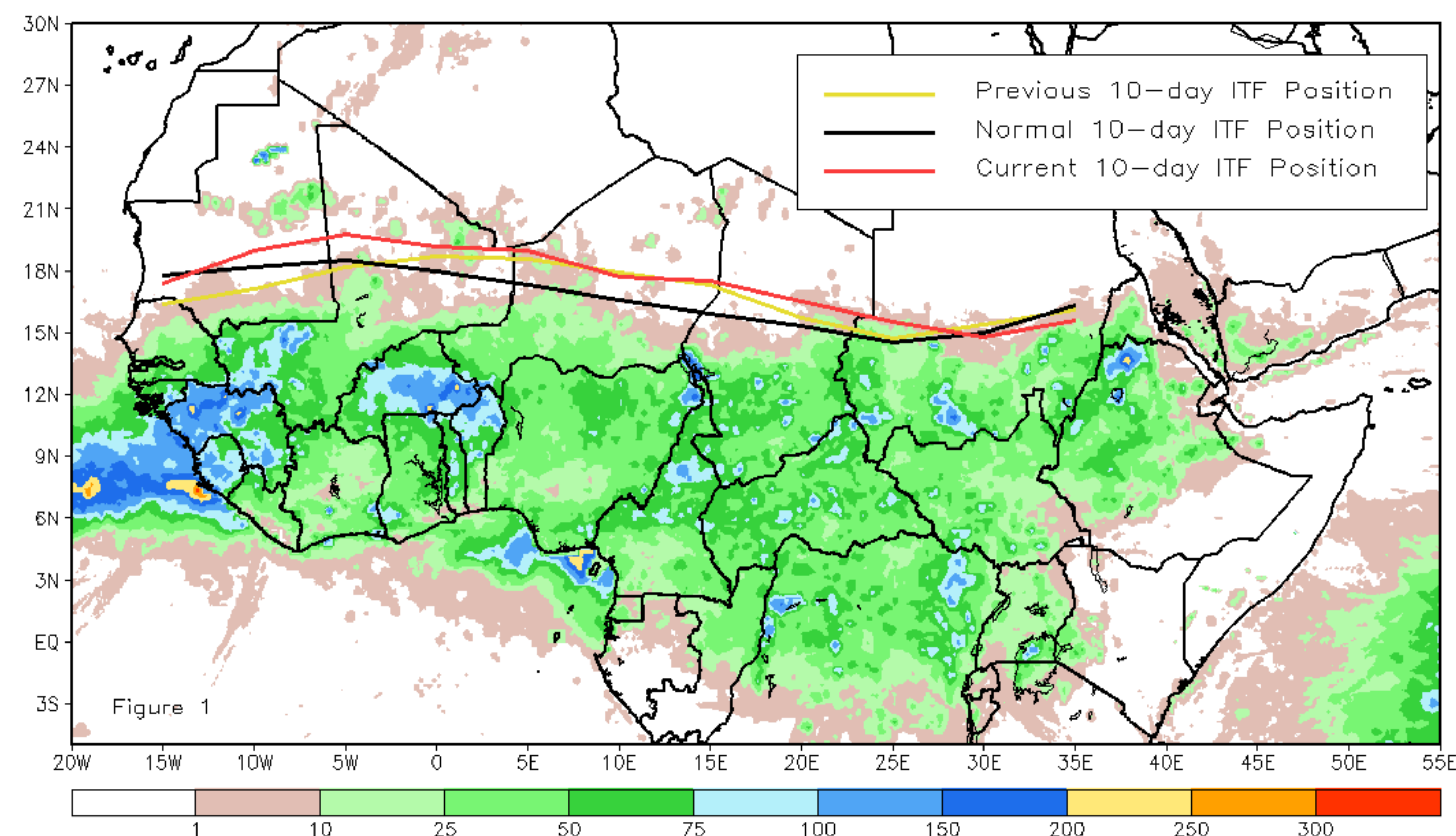
July 2019, Dekad 1

Discussion:

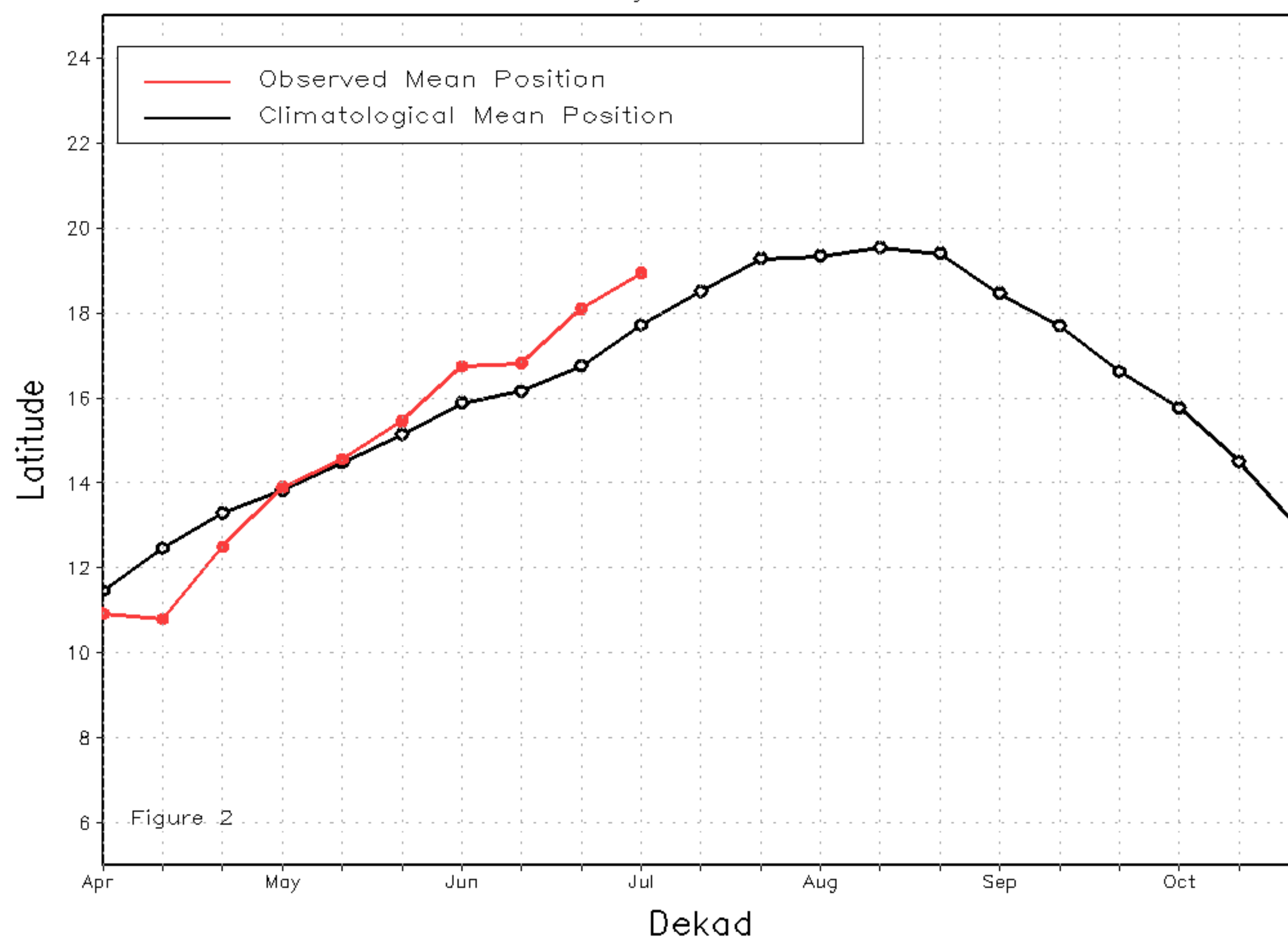
From July 1-10, the ITF, west of the prime meridian, progressed steadily northward compared to the previous decade, while the remainder deviated less from its previous position. The mean western (15W-0E) portion of the ITF position is approximated at 18.9N, which is north of its climatological position by 1.2 degrees. The western end of the ITF climatological location has likely contributed to recent increases in rainfall over Senegal and western Mali. Between 0E-35E, the ITF was approximated at 15.6N, which is .3 degrees north of its climatological position and only slightly north of its position during the previous dekad. Figure 1 shows the current position of the ITF relative to the long-term average position during the 1st dekad of July and its previous position during the 3rd dekad of June. Figures 2 and 3 are time series, illustrating the latitudinal values of the western and eastern portions of the ITF, respectively, and their seasonal evolutions since April, 2019.

Current vs. Normal Dekadal ITF Position
and RFE Accumulated Precipitation (mm)

July 2019, Dekad 1



Mean Western Portion of the ITF: Averaged 10W to 10E
As of: July 2019, Dekad 1



Mean Eastern Portion of the ITF: Averaged 20E to 35E
As of: July 2019, Dekad 1

