



CPC Africa Desk InterTropical (ITF) Front Analysis

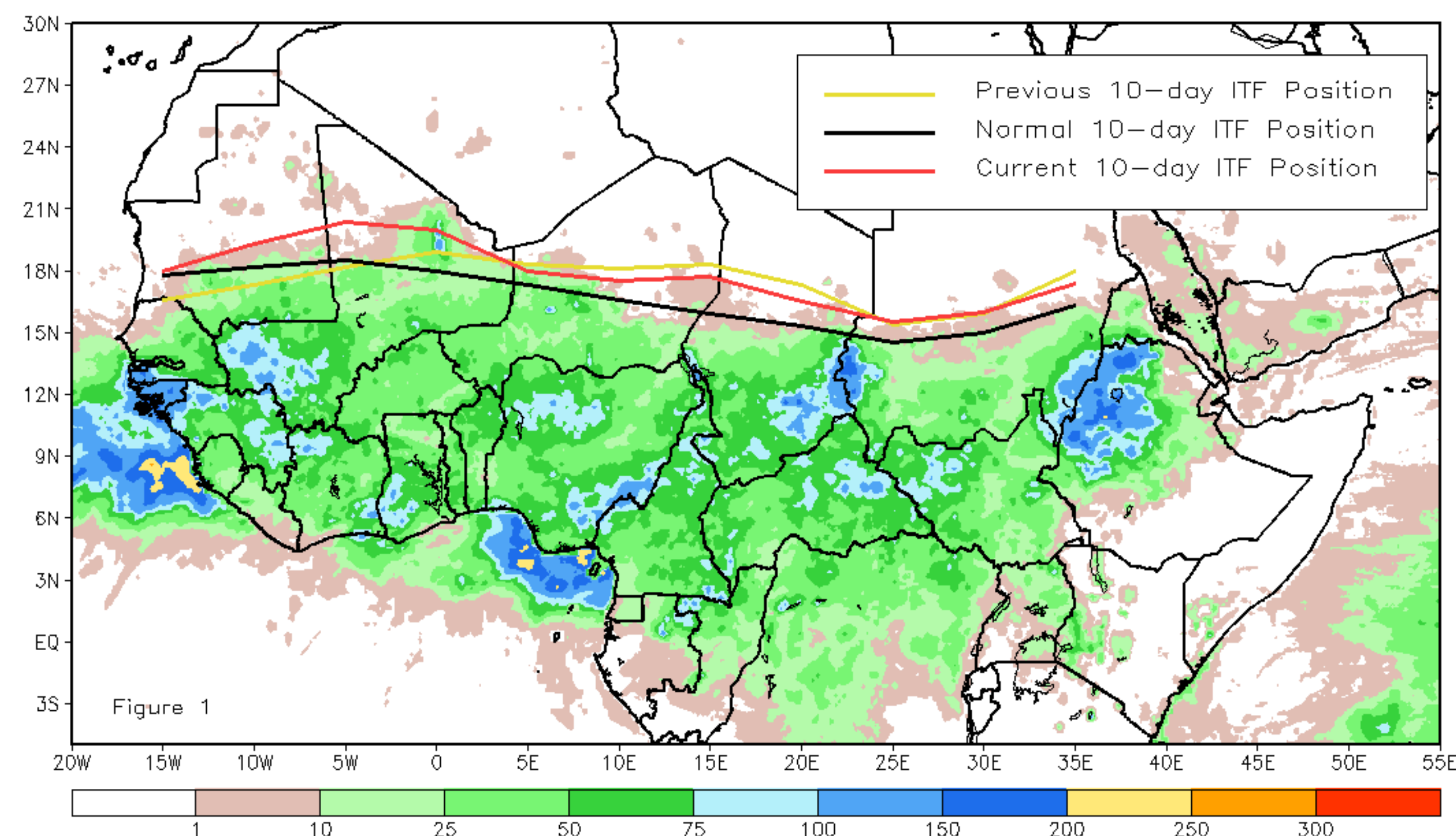
July 2018, Dekad 1

Discussion:

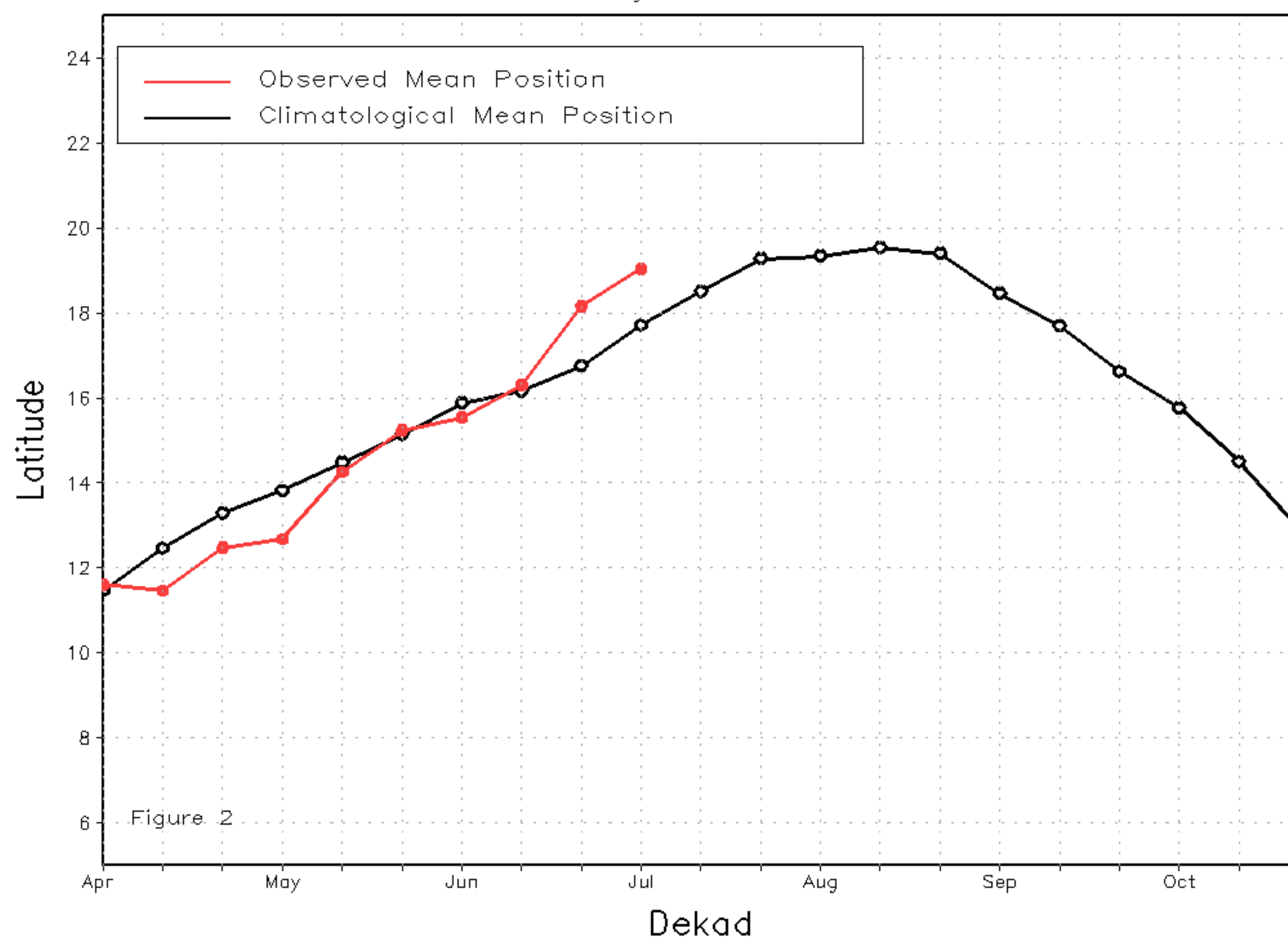
From July 1-10, the ITF exhibited substantial northward advancement west of 0 degrees longitude, but elsewhere exhibited little movement from its previous position during late June. The mean western (10W-10E) portion of the ITF was approximated at 19.0N, located well north of the climatological normal position (17.7N) by 1.2 degrees. The mean eastern (20E - 35E) portion of the ITF was approximated at 16.4N, slightly south of the last dekad much above the climatological mean position (15.3N) by 1.1 degrees. The northward displacement of the ITF has resulted in heavier than normal rains across portions of northwestern Ethiopia, eastern Sudan, and Eritrea. Figure 1 shows the current position of the ITF relative to the mean climatological (black) position during the 1st dekad of July and its previous (yellow) position during the 3rd dekad of June. Figures 2 and 3 are time series, illustrating the mean latitudinal values of the western and eastern portion of the ITF, respectively, and their seasonal evolution compared to climatology since April, 2018.

Current vs. Normal Dekadal ITF Position
and RFE Accumulated Precipitation (mm)

July 2018, Dekad 1



Mean Western Portion of the ITF: Averaged 10W to 10E
As of: July 2018, Dekad 1



Mean Eastern Portion of the ITF: Averaged 20E to 35E
As of: July 2018, Dekad 1

