



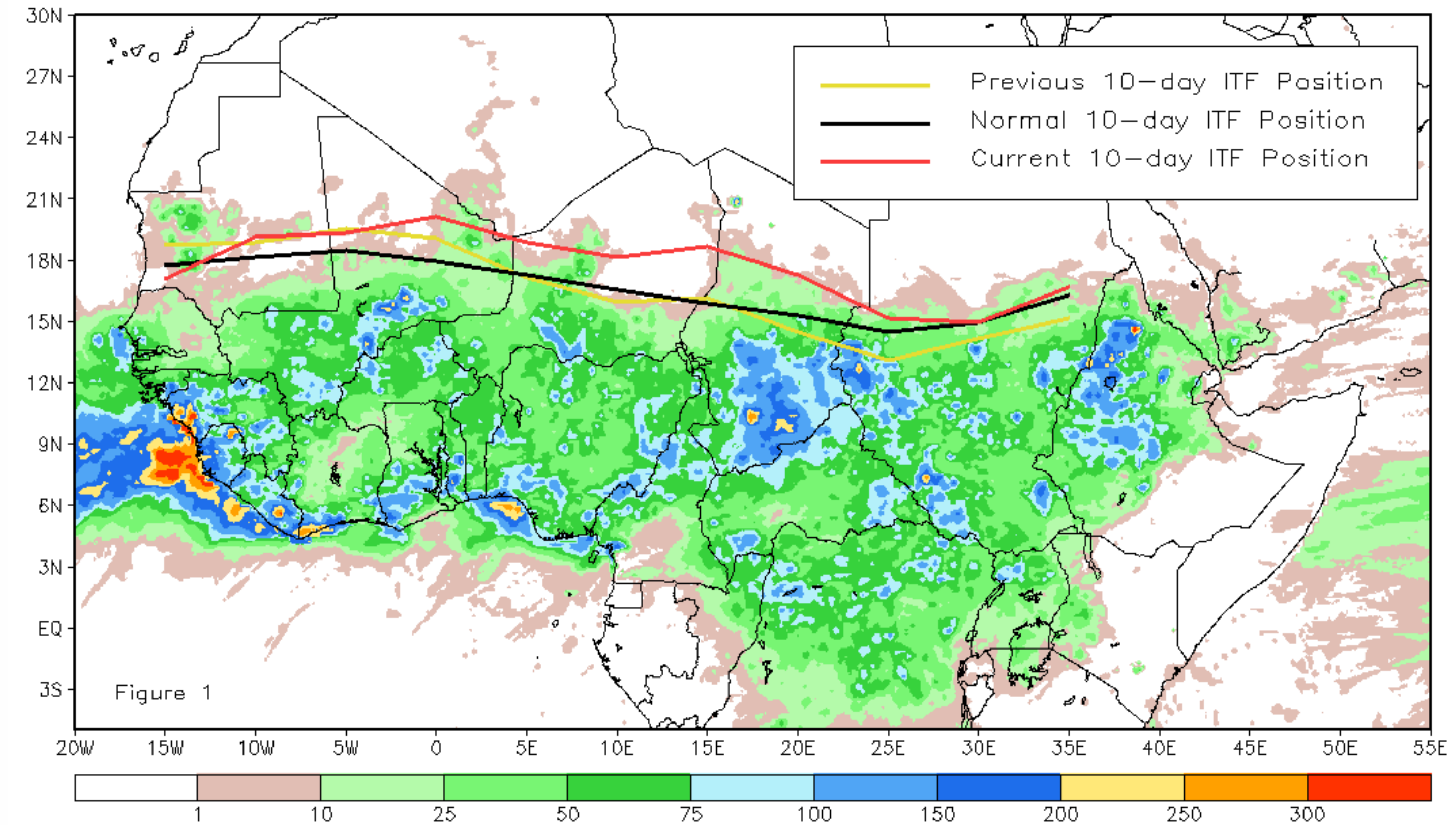
# CPC Africa Desk InterTropical (ITF) Front Analysis

## July 2017, Dekad 1

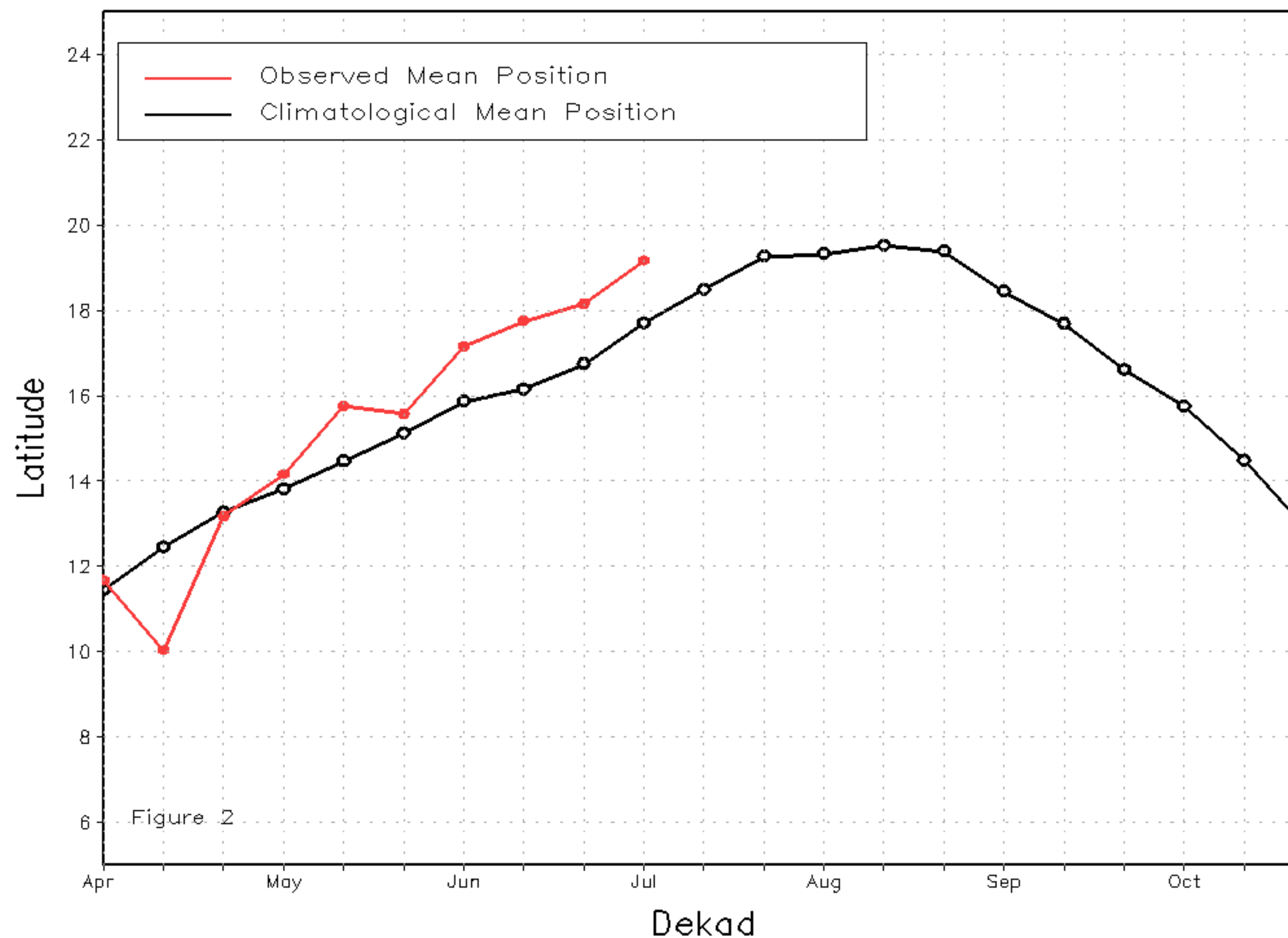
### Discussion:

From July 1-10, the ITF experienced some northward movement across its western portion and significant northward advancement relative to its position during the previous period across its eastern segment. The western (10W-10E) portion of the ITF was approximated at 19.2N, which was to the north of the mean position by 1 degree. This resulted in the continuation of above-average rainfall along the Gulf of Guinea and parts of the Sahel. The eastern (20E-35E) portion of the ITF was located at 16.0N, which was to the north of the long-term average position by 0.7 degree. This led to above-average rainfall over parts of western Ethiopia and Sudan. Figure 1 shows the current position of the ITF relative to its climatological position during the 1st dekad of July and its previous position during the 3rd dekad of June. Figures 2 and 3 are time series, illustrating the mean latitudinal values of the western and eastern portion of the ITF, respectively, and their evolutions since April, 2017.

Current vs. Normal Dekadal ITF Position  
and RFE Accumulated Precipitation (mm)  
July 2017, Dekad 1



Mean Western Portion of the ITF: Averaged 10W to 10E  
As of: July 2017, Dekad 1



Mean Eastern Portion of the ITF: Averaged 20E to 35E  
As of: July 2017, Dekad 1

