



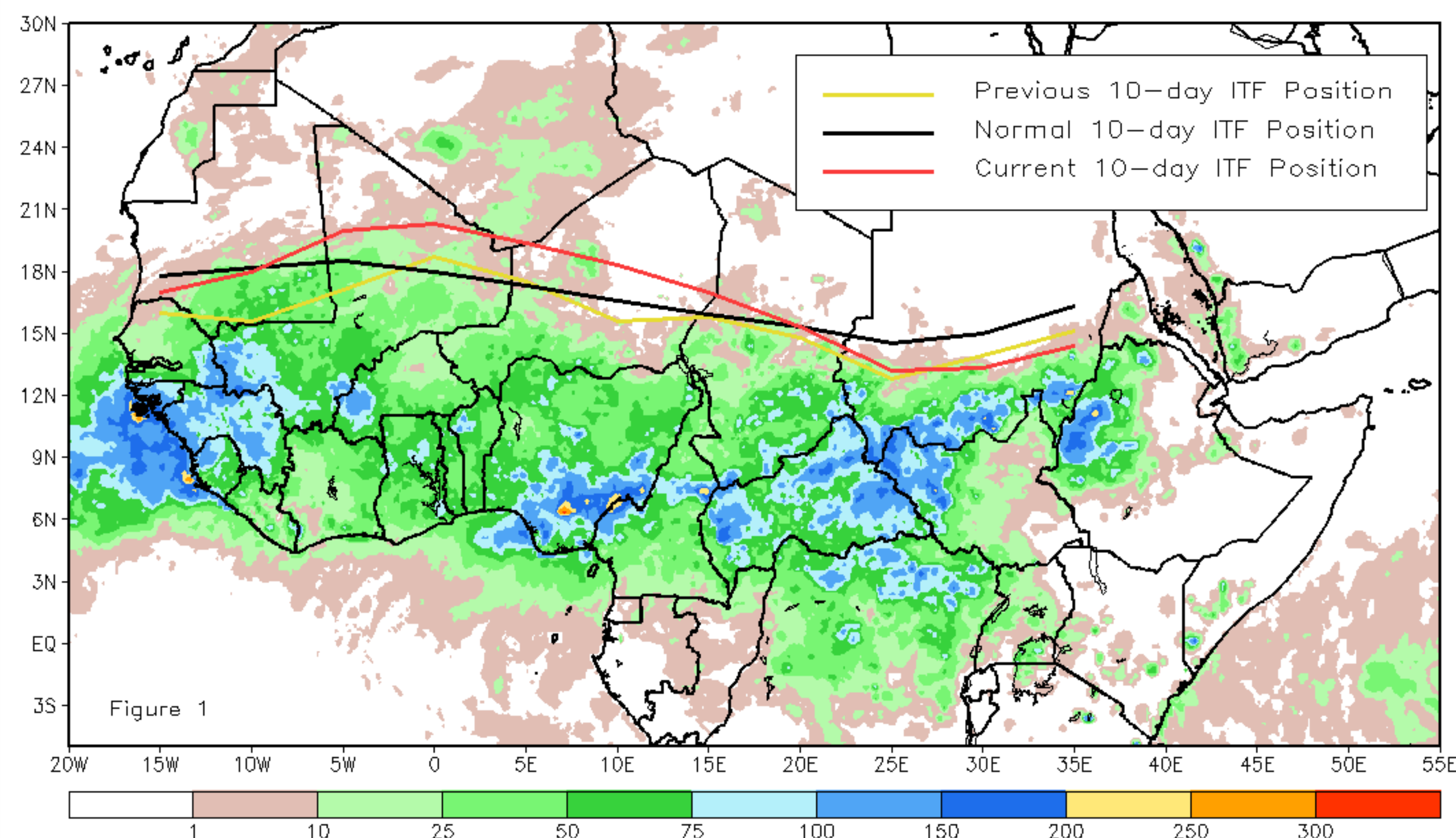
CPC Africa Desk InterTropical (ITF) Front Analysis

July 2015, Dekad 1

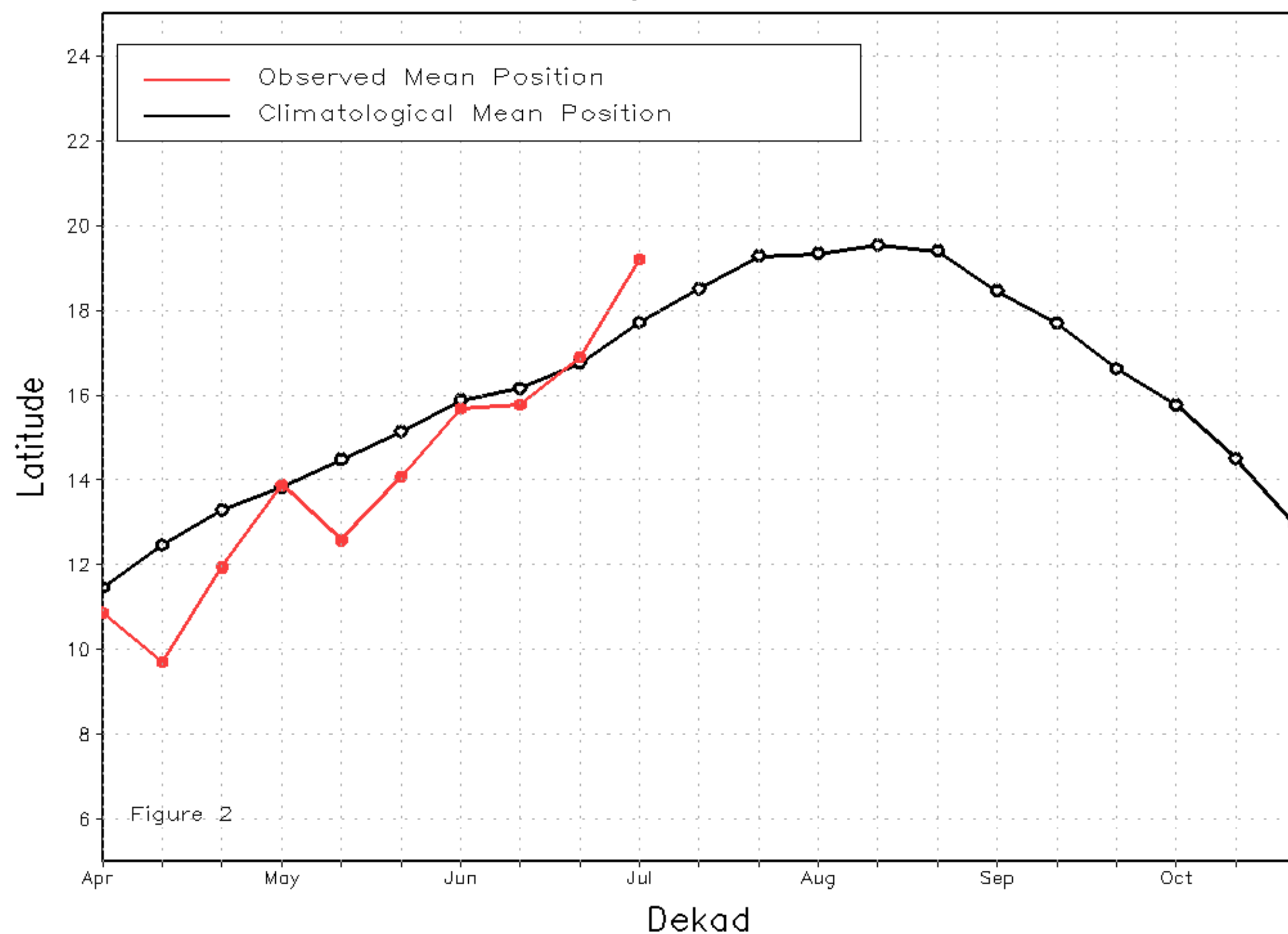
Discussion:

From July 01-10, 2015, the ITF advanced further north, especially along its western segment, bringing rainfall as far north as north-central Mali. The mean western portion of the ITF was located approximately at 19.2N and was to the north of the average value by one and a half degrees during this time of the year. This, therefore, resulted in wetter than average conditions across much of the Sahel and West Africa. In contrast, the ITF slightly retreated to the south across Eastern Africa related to its previous position during the 3rd dekad of June. The mean eastern portion of the ITF was centered only upon 14.1N, while the climatological position was located at 15.3N. This anomalously southerly position was possibly responsible for the drier than average conditions over parts of Sudan, South Sudan, and Ethiopia during the period. Figure 1 displays the current position of the ITF relative to its climatological position during the first dekad of July and its previous position during the 3rd dekad of June. Figures 2 and 3 are time series, illustrating the mean latitudinal values of the western and eastern portion of the ITF, respectively, and their evolutions since April, 2015.

Current vs. Normal Dekadal ITF Position
and RFE Accumulated Precipitation (mm)
July 2015, Dekad 1



Mean Western Portion of the ITF: Averaged 10W to 10E
As of: July 2015, Dekad 1



Mean Eastern Portion of the ITF: Averaged 20E to 35E
As of: July 2015, Dekad 1

