



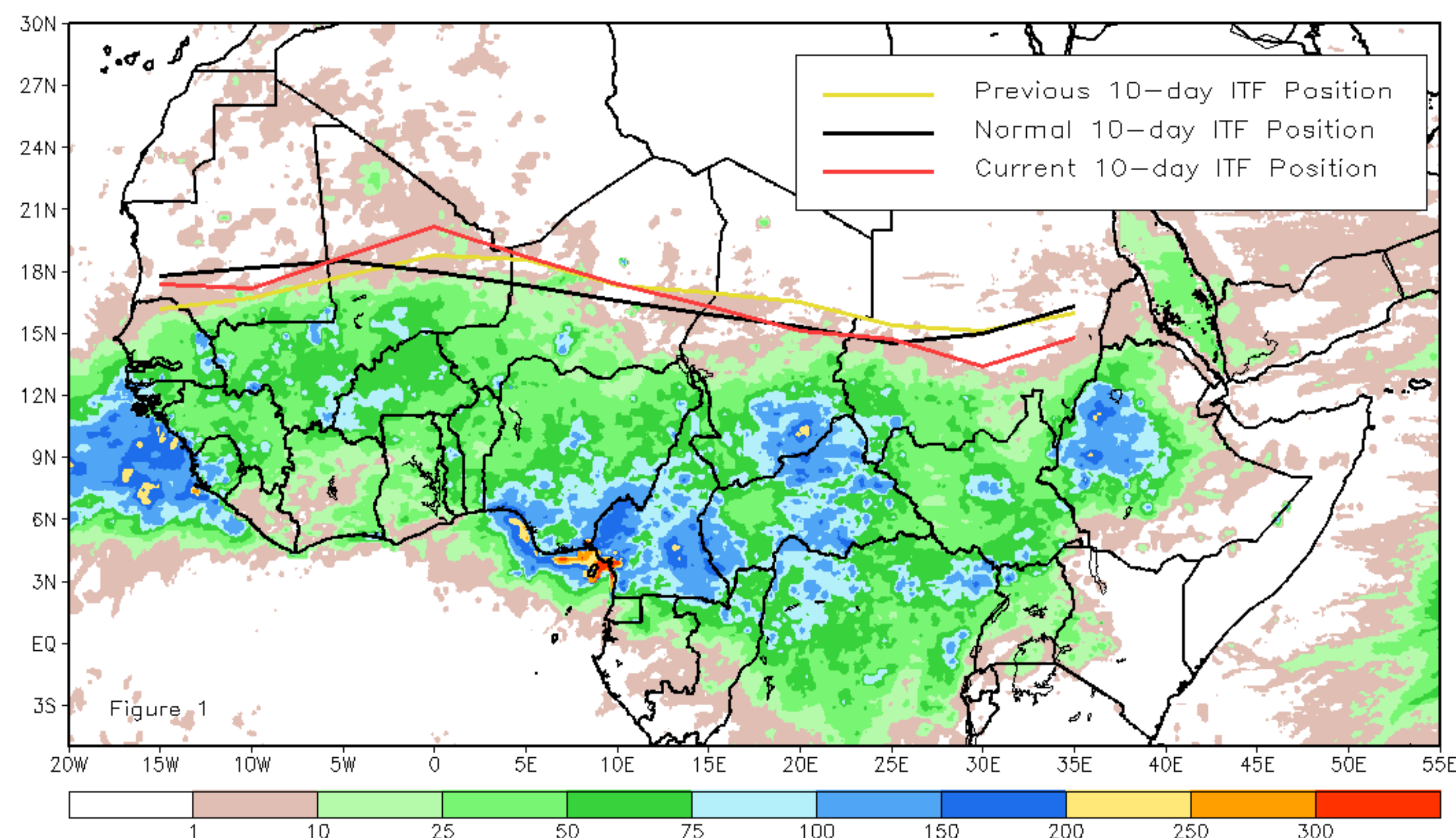
CPC Africa Desk InterTropical (ITF) Front Analysis

July 2013, Dekad 1

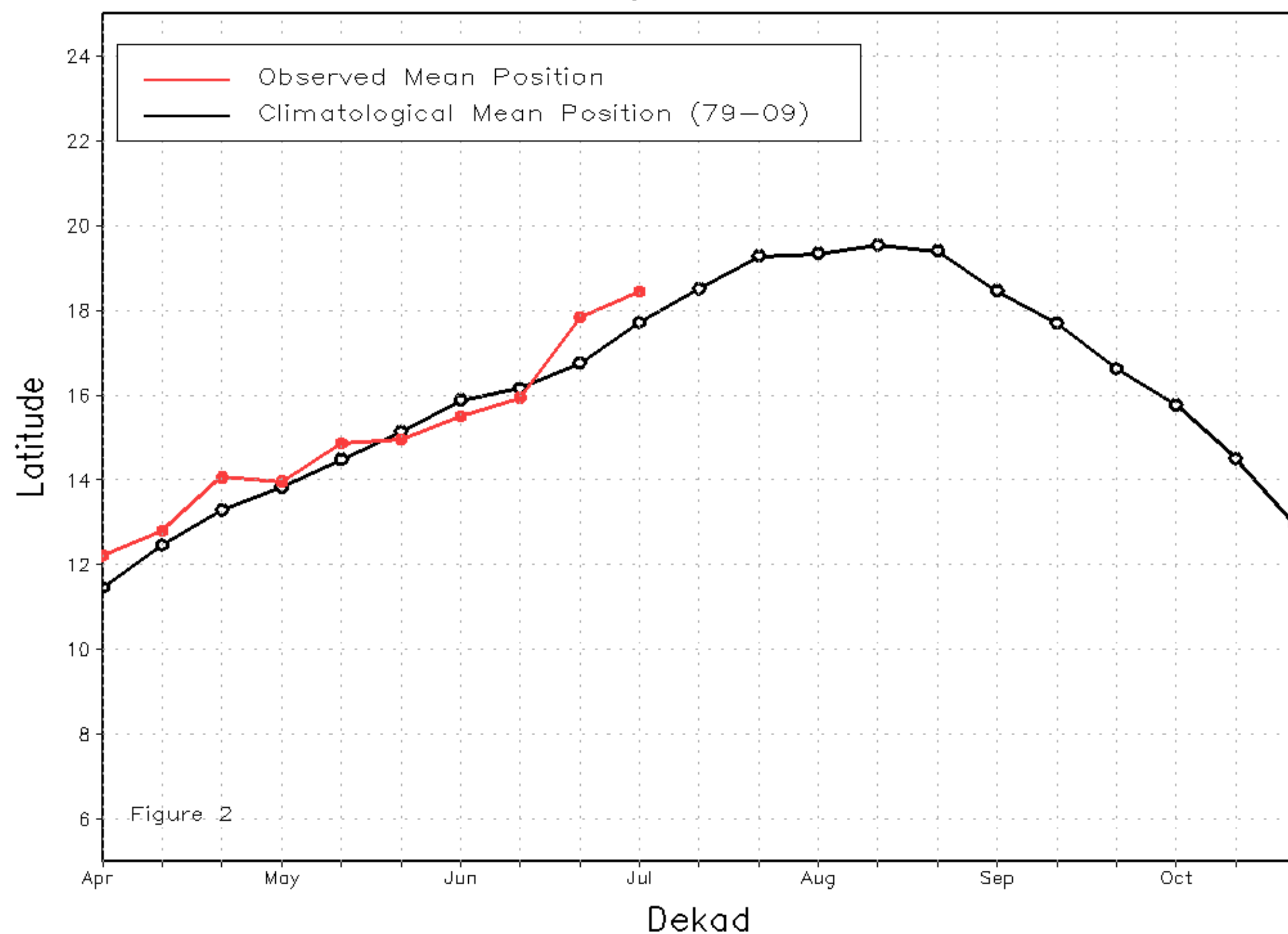
Discussion:

From July 1 - 10, 2013, the ITF pushed further north across West Africa, bringing above-average rainfall over many areas of the Sahel, including coastal Senegal, southern Mauritania, eastern Mali, Burkina Faso, and portions of western Niger. The mean western portion of the ITF was located near 18.4 degrees N, which was ahead of the mean position by 0.7 degree. In contrast, the ITF was behind the average climatological position across the eastern portion of Africa and resulted in below-average rainfall across western South Sudan, southern Sudan, and along the borders between eastern Sudan, northwestern Ethiopia, and southwestern Eritrea during the same period. The mean eastern segment of the ITF was centered upon 14.5 degrees N, which trailed the mean position by 0.8 degree. Figure 1 shows the current ITF position relative to the long-term average position during the first dekad of July and its previous position during the third dekad of June. Figures 2 and 3 are time series, displaying the mean latitudinal values of the western and eastern portion of the ITF, respectively, and their evolutions since April, 2013.

Current vs. Normal Dekadal ITF Position
and RFE Accumulated Precipitation (mm)
July 2013, Dekad 1



Mean Western Portion of the ITF: Averaged 10W to 10E
As of: July 2013, Dekad 1



Mean Eastern Portion of the ITF: Averaged 20E to 35E
As of: July 2013, Dekad 1

