



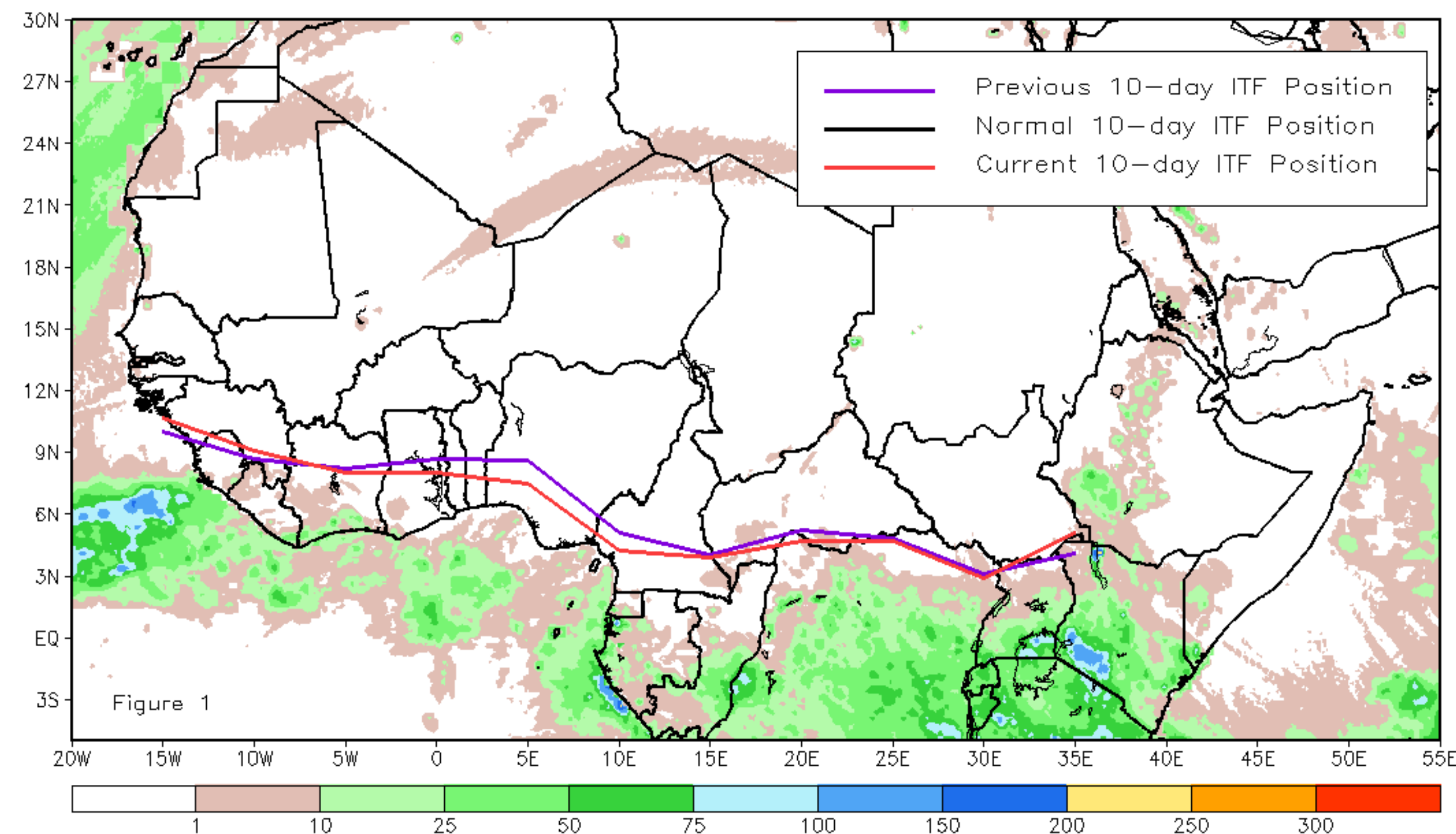
# CPC Africa Desk InterTropical (ITF) Front Analysis

## January 2024, Dekad 2

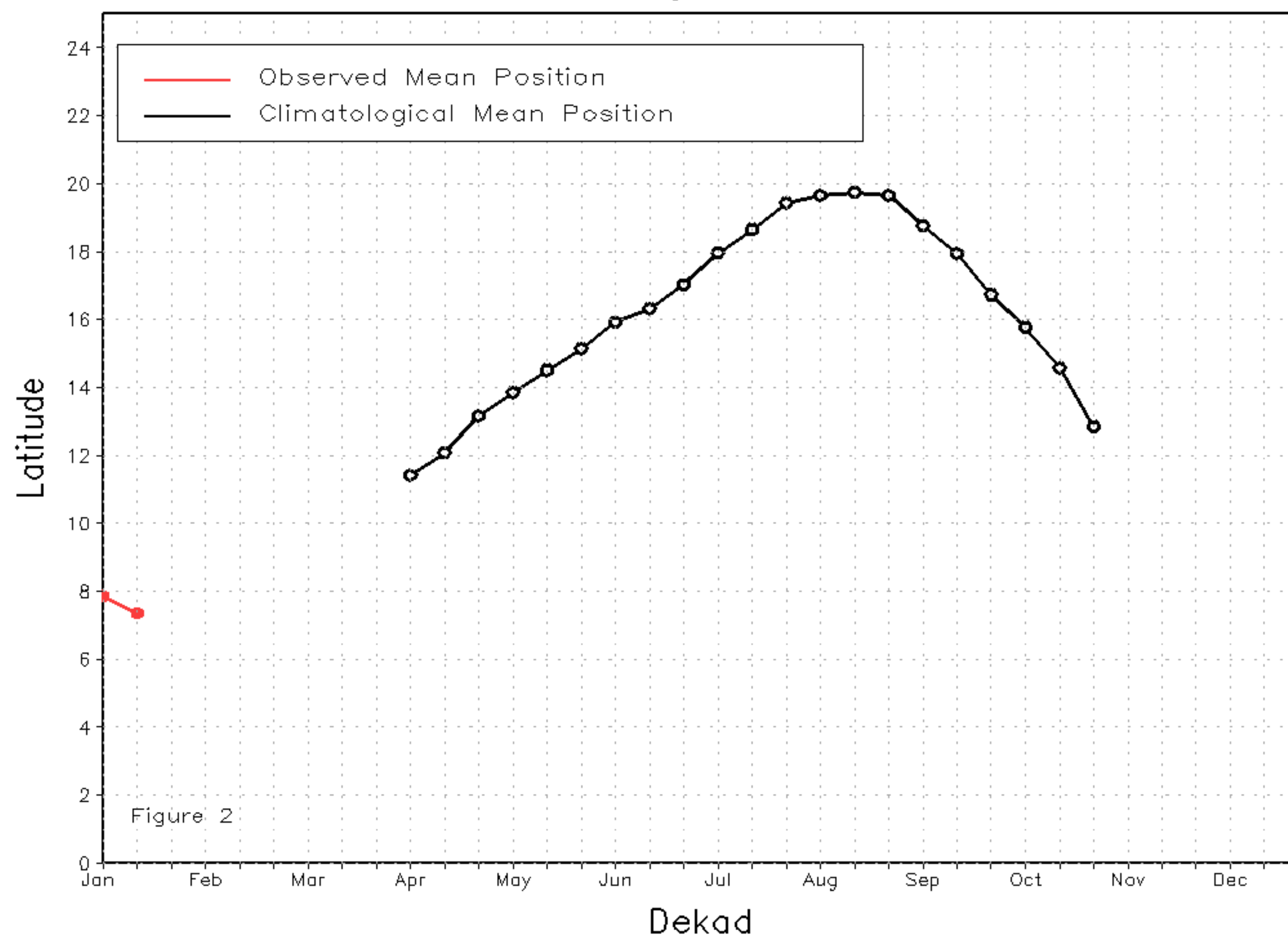
### Discussion:

Between 11 and 20 January, the current Inter-Tropical Front (ITF) shifted southward for most of its entire length, except for its positions around Guinea in the west and South Sudan in the east, where the ITF moved northward relative to its previous location. Specifically, the current ITF was located at approximately 7.4N in the western portion (10W-10E), which is south of its previous position at 8.2N. In the eastern part (20E-35E), the current ITF location is around 4.3N compared to 5.1N in the previous position. Figure 1 displays the current position of the ITF during the 2nd dekad of January and its previous position during the 1st dekad of January. Figures 2 and 3 are time series, illustrating the latitudinal positions for the western and eastern portions of the ITF, respectively, and their seasonal evolutions since the beginning of April 2024.

Current vs. Normal Dekadal ITF Position  
and RFE Accumulated Precipitation (mm)  
January 2024, Dekad 2



Mean Western Portion of the ITF: Averaged 10W to 10E  
As of: January 2024, Dekad 2



Mean Eastern Portion of the ITF: Averaged 20E to 35E  
As of: January 2024, Dekad 2

