



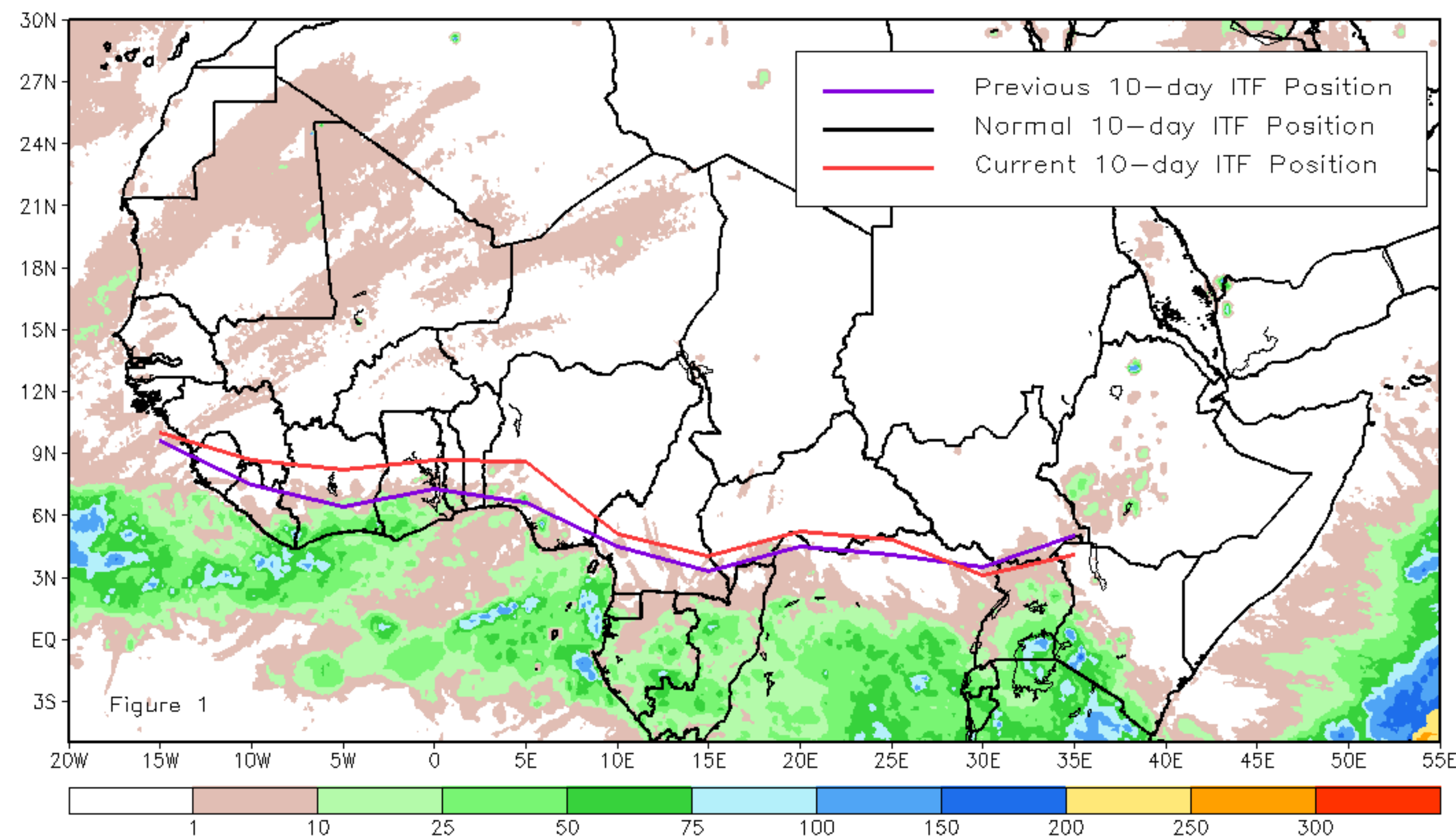
CPC Africa Desk InterTropical (ITF) Front Analysis

January 2024, Dekad 1

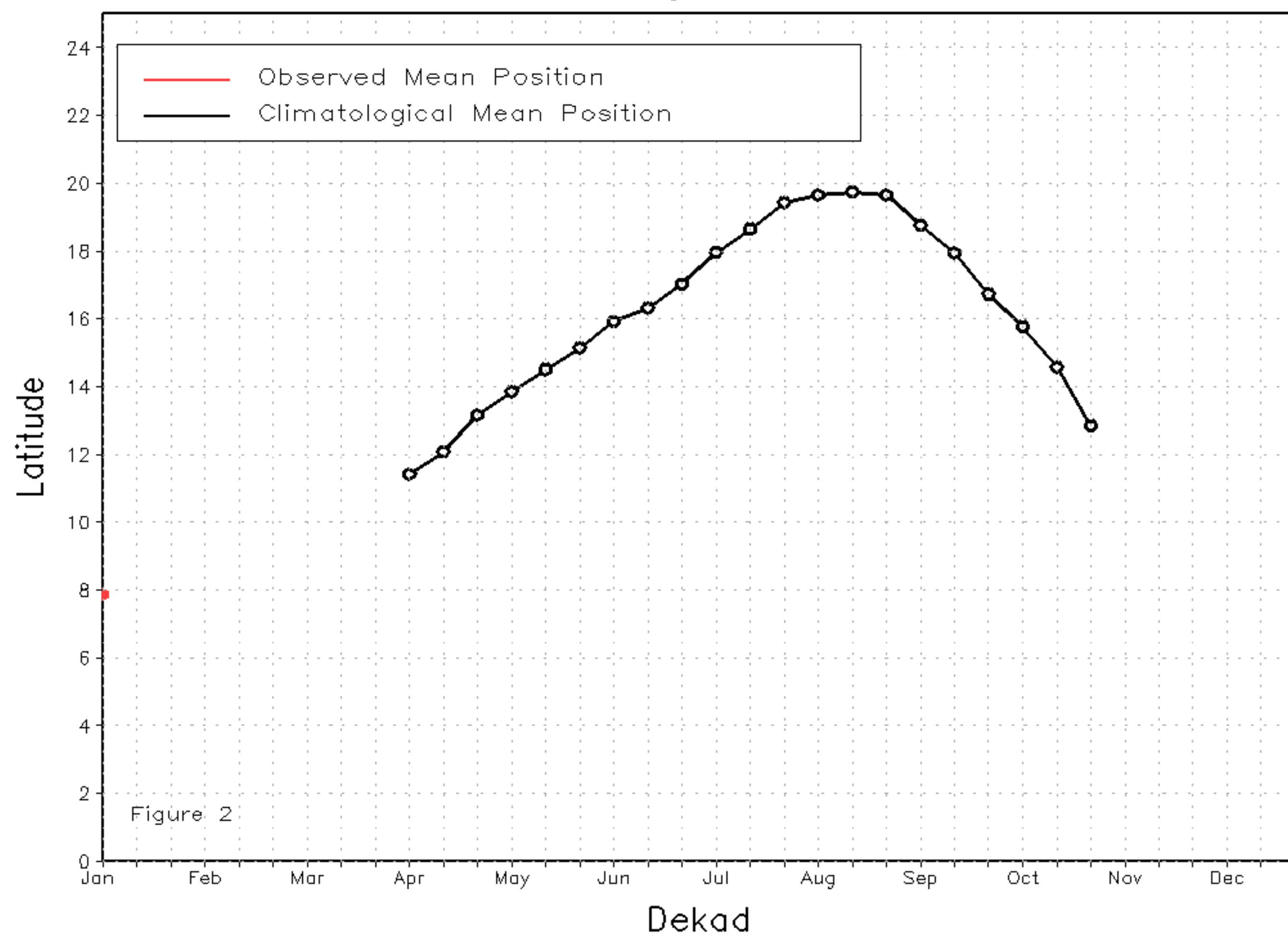
Discussion:

Between 1 and 10 January, the Inter-Tropical Front (ITF) moved north for most of its entire length compared to its previous position. It is only at the eastern tip, around Uganda, where the current ITF moved south relative to its previous position. Specifically, the current ITF was located at approximately 8.2N in the western portion (10W-10E), which is north of its previous position at 6.5N. In the eastern part (20E-35E), the current ITF location is around 5.1N compared to 4.3N in the previous position. Figure 1 displays the current position of the ITF during the 1st dekad of January and its previous position during the 3rd dekad of December. Figures 2 and 3 are time series, illustrating the latitudinal positions for the western and eastern portions of the ITF, respectively, and their seasonal evolutions since the beginning of April 2024.

Current vs. Normal Dekadal ITF Position
and RFE Accumulated Precipitation (mm)
January 2024, Dekad 1



Mean Western Portion of the ITF: Averaged 10W to 10E
As of: January 2024, Dekad 1



Mean Eastern Portion of the ITF: Averaged 20E to 35E
As of: January 2024, Dekad 1

