



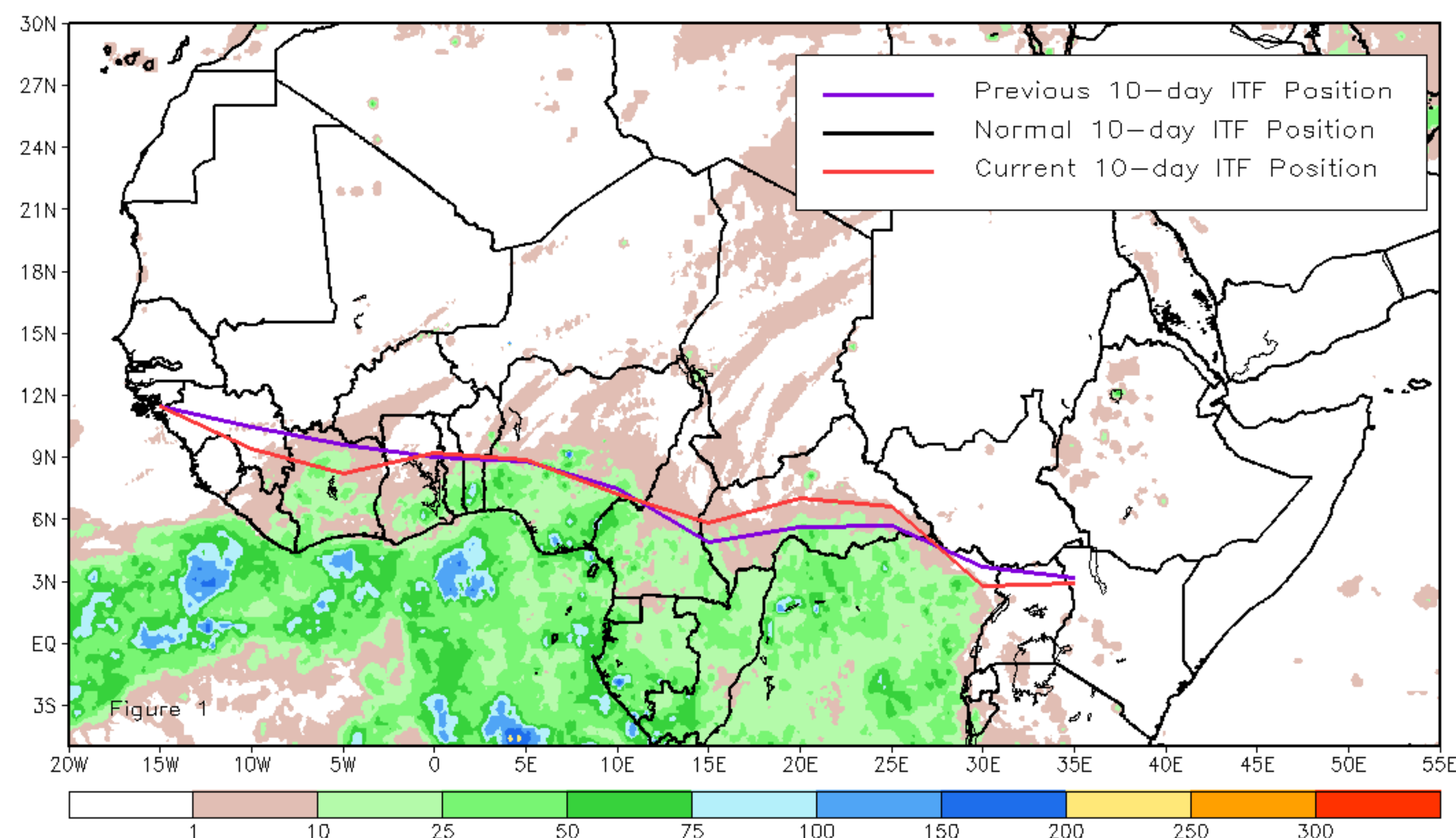
# CPC Africa Desk InterTropical (ITF) Front Analysis

## February 2025, Dekad 3

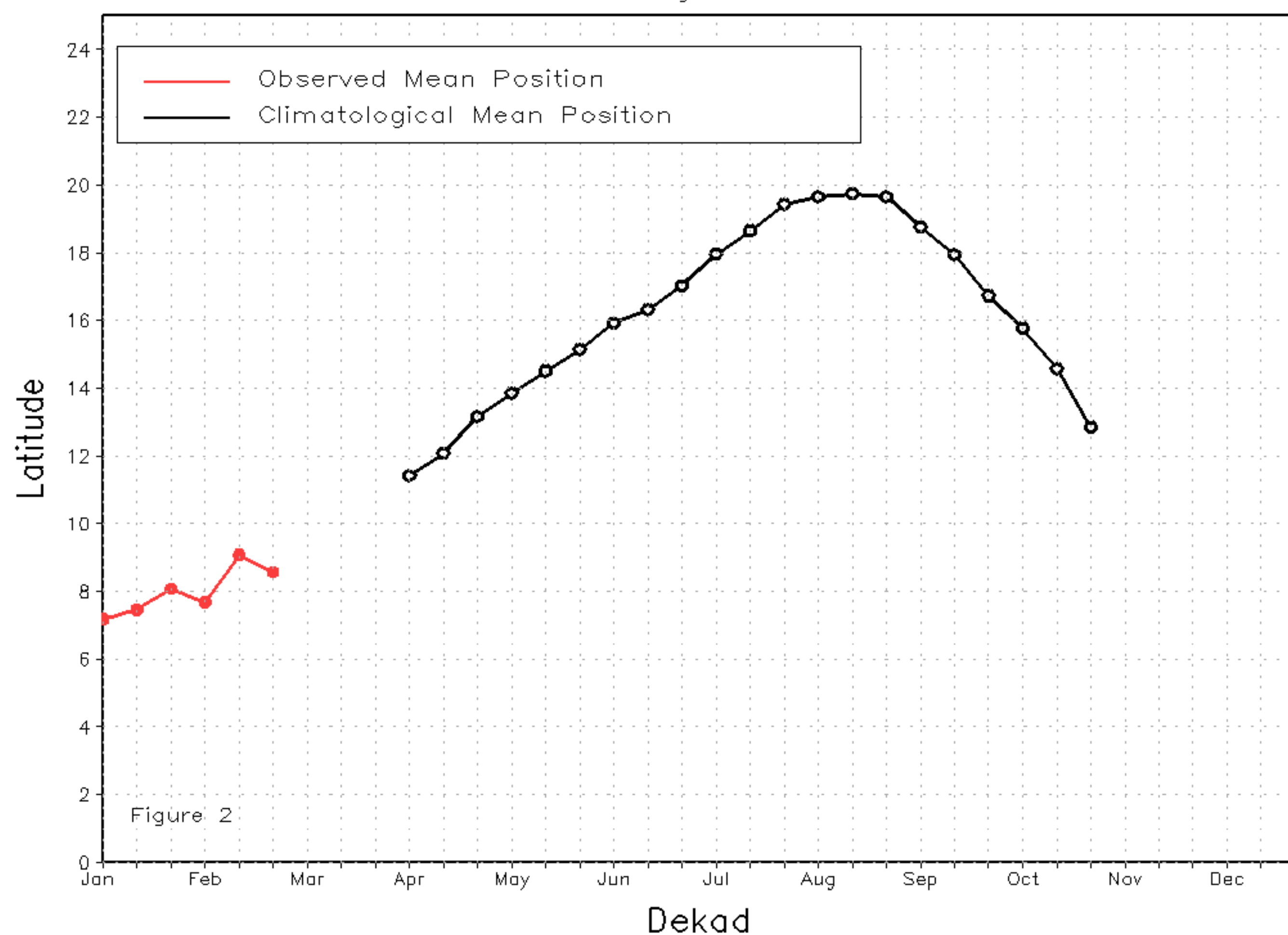
### Discussion:

From February 21 to 28, the current Inter-Tropical Front (ITF) shifted southward in the western part and northward in the eastern part compared to its previous position. Specifically, the current ITF was located at approximately 8.6N in the western portion (10W-10E), which is south of its previous position at 9.1N. In the eastern part (20E-35E), the current ITF location is around 4.8N compared to 4.6N in the previous position. Figure 1 displays the current position of the ITF during the 3rd dekad of February and its previous position during the 2nd dekad of February. Figures 2 and 3 are time series, illustrating the latitudinal positions for the western and eastern portions of the ITF, respectively, and their seasonal evolutions since the beginning of April 2025.

Current vs. Normal Dekadal ITF Position  
and RFE Accumulated Precipitation (mm)  
February 2025, Dekad 3



Mean Western Portion of the ITF: Averaged 10W to 10E  
As of: February 2025, Dekad 3



Mean Eastern Portion of the ITF: Averaged 20E to 35E  
As of: February 2025, Dekad 3

