



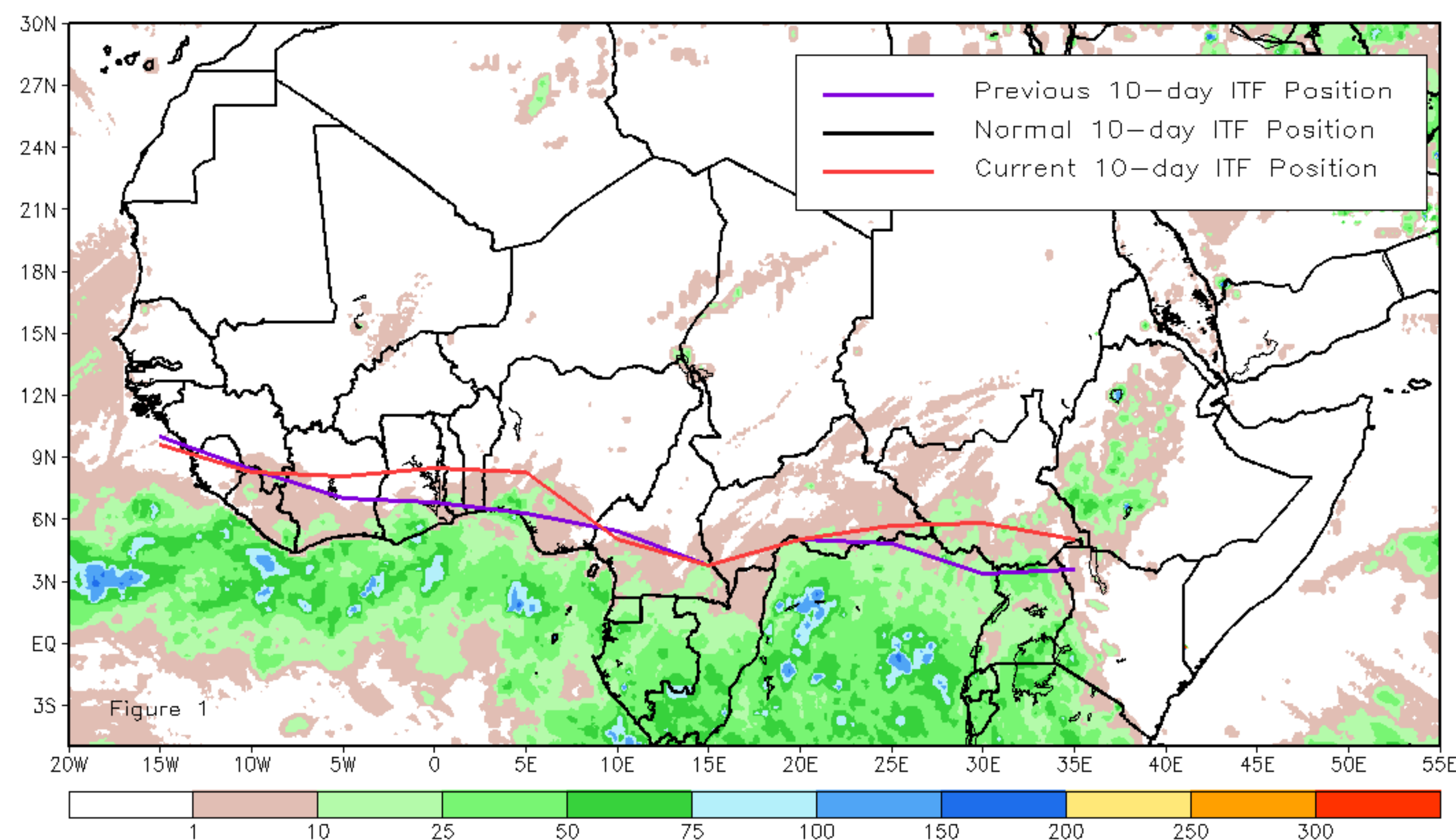
CPC Africa Desk InterTropical (ITF) Front Analysis

February 2024, Dekad 2

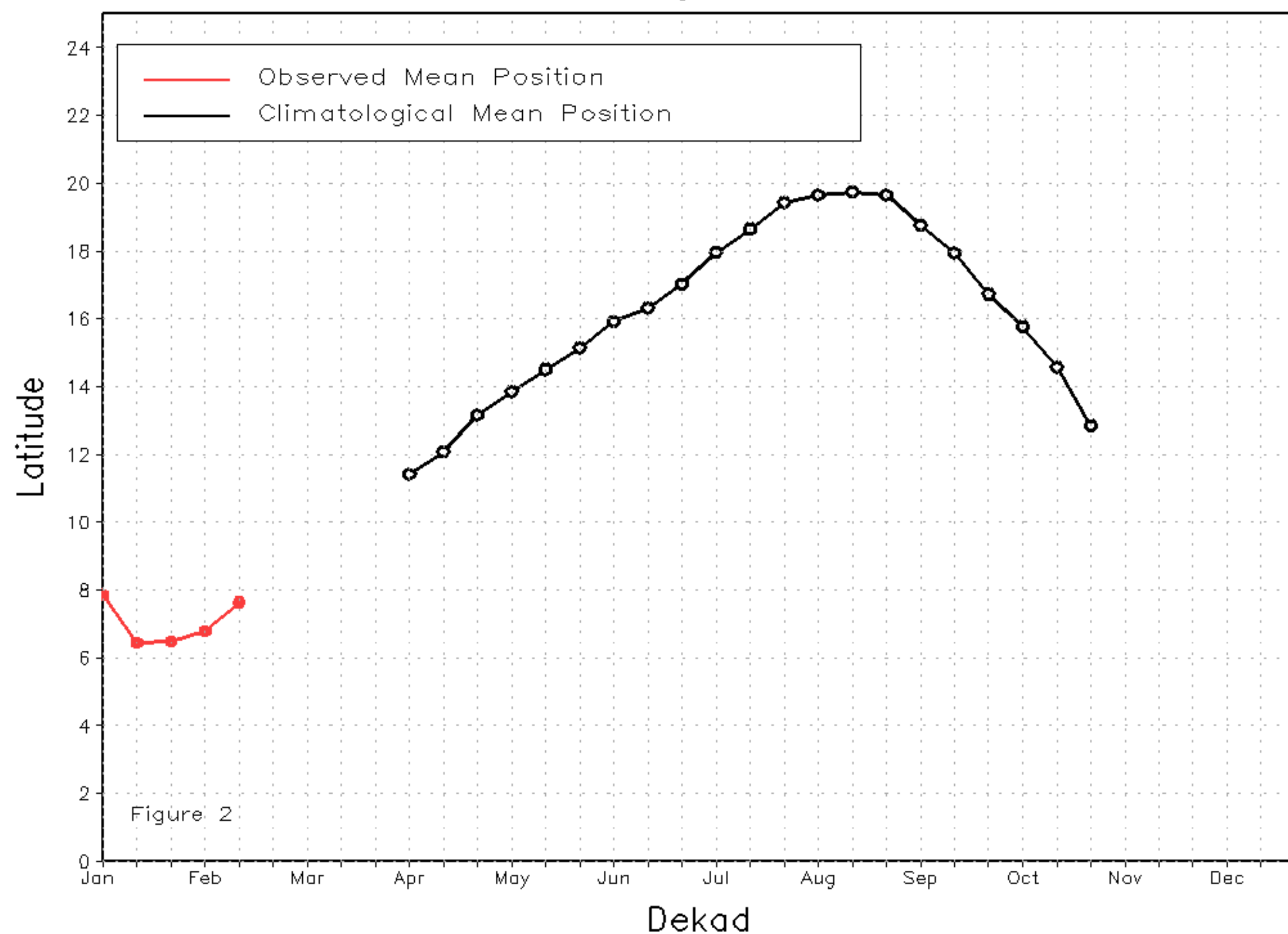
Discussion:

Between 11 and 20 February, the Inter-Tropical Front (ITF) moved north over most of its length, except for Sierra Leone in the west and Cameroon in the east, where it moved south. The current ITF is now located at approximately 7.6N in the western portion (10W-10E), which is north of its previous position at 6.8N. In the eastern part (20E-35E), the current ITF location is around 5.4N, compared to its previous position at 4.2N. Figure 1 displays the current position of the ITF during the 2nd dekad of February and its previous position during the 1st dekad of February. Figures 2 and 3 are time series, illustrating the latitudinal positions for the western and eastern portions of the ITF, respectively, and their seasonal evolutions since the beginning of April 2024.

Current vs. Normal Dekadal ITF Position
and RFE Accumulated Precipitation (mm)
February 2024, Dekad 2



Mean Western Portion of the ITF: Averaged 10W to 10E
As of: February 2024, Dekad 2



Mean Eastern Portion of the ITF: Averaged 20E to 35E
As of: February 2024, Dekad 2

